

COMPANY/ ENTITY

CONTACT PERSON

PHONE NO.

EMAIL ADDRESS

DELIVERY ADDRESS



Womens Comfort Waist Straight Leg Pant

Fabric

64% Polyester 34% Viscose 2% Elastane

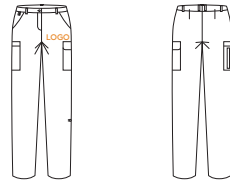
Style

You'll be impressed with the hard wearing, durable, and easy-care fabric. Made from a lightweight twill fabric, it's breathable and comfortable making it perfect for all climates and health care roles. Cargo pant style, with multiple pockets for storing all your tools. Side pockets, key loop and roll up leg feature for working in wet areas. Comfort waist band for extra flexibility and movement.

Color Option



Printing Service



Custom LOGO Printing/embroidery service available by quote.

Measurement Information

CL955LL Womens Comfort Waist Straight Leg Pant

SIZE	8	10	12	14	16	18	20	22	24	26	28	30
½ WAIST RELAXED (CM)	36	38.5	41	43.5	46	49.5	52	54.5	57	59.5	62	64.5
WAIST STRETCHED (CM)	40.5	43	45.5	48	50.5	54	56.5	59	61.5	64	66.5	69
½ HIP* (CM)	49	51.5	54	56.5	59	62.5	65	67.5	70	72.5	75	77.5
IN LEG (CM)	76	76	76	76	76	76	76	76	76	76	76	76

*Men Style available **CL958ML**

ORDER STEPS

- Colour, Size & Qty: (e.g. black Mx3, Lx7)

Printing Embroidery
- Pre-Production Approval*
Send logo/artwork to: artwork@danzo.com.au
receive proof & invoice
- Payment & Production
Approx 1 week lead time
- Pick up Delivery *\$12+GST Flat

PRICE INFORMATION

QTY	Price	Printing/embroidery service
10-19	\$63	Ask For Quote
20-49	\$59.85	
50-99	\$56.7	
100-199	\$53.55	Ask For Quote
200+		

Set up fee from \$60 per Logo. All Prices are EX-GST.
 Pint area: chest, ≤10cm back≤A4.
 Other/additional position available by quote.
 DIY Option: order transfer film and print on your garments.

*Artwork Format:

Vector in CMYK colour, fonts must be outlined (ai,eps,pdf).
 Any logos not provided as vector format may incur additional re-drawing fees.