

Danzo™

Trusted Promo Wear & Gifts

Health | Medical | Care

Building & Construction

Food & Hospitality

Education & Training

Sports & Entertainment

Transport & Storage

Warehouse & Logistics

Rail | Road | Energy

Corporate Wear

Automotive Industry

Gift Idea



Professional Wear | Uniforms

DANZO AUSTRALIA

Danzo is tailored to meticulous details, providing **digital transfer**, **screen printing** and **embroidery** services that cater to every consumer's needs for professional wears. Danzo is now fully equipped with the latest production lines to offer comprehensive support to its trading partners.

Why choose Danzo for your next order?

- ✓ One-stop shop for uniforms.
- ✓ 100% Made in Australia: Print & Embroidery.
- ✓ 2000+ styles across a wide product range.
- ✓ Showroom available for selection & fitting.
- ✓ FREE fitting samples can be arranged to your office.
- ✓ Latest printing technology: CMYK colour print with white ink base.
- ✓ Excellent colour performance on dark garments.
- ✓ High resolution graphic print with soft & smooth finishing.
- ✓ Low & Fixed Set-up Fee | Quick Turnaround
- ✓ DIY: Order printed film from us and Heat Press By Yourself [Free Sample]



APPARELS

Polo	08
Tee & Singlet	22
Jacket & Vest	40
Sports & Entertainment	64
Corporate Wear	84
Food & Hospitality	112
Health Medical Care	128
Building & Construction	262
Rail Road Energy	306

PROMO GIFTS

Headwear	146
Backpack	160
Drinkaware	168
Pens	190
Office Stationery	196
Bags	206
Keychains & Promotions	220
Technology	238
Home & Entertainment	252



POLO





NEON POLO

Easy and versatile, our classic pique polo is essential for everyday

P2100 MENS
P2125 LADIES

FABRIC

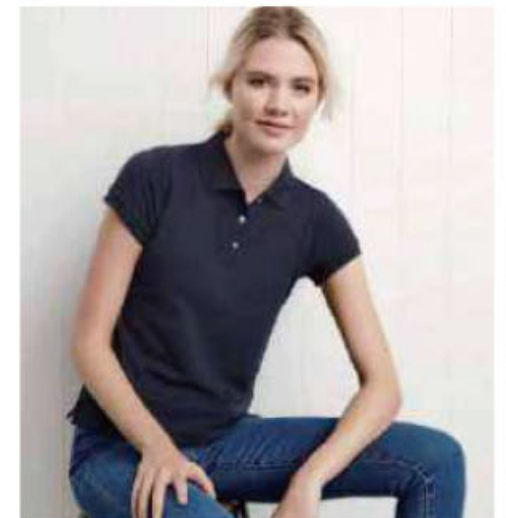
- 65% Polyester, 35% Cotton Premium Pique Knit
- 210 GSM
- UPF Rating - Excellent

FEATURES

- Excellent easy-care, anti-fade, anti-shrink durability
- Self fabric collar and button placket
- Contrast side inset and shoulder print feature elevates this classic style
- Mens has raglan style sleeve with flatlocking stitch detail
- Mens style includes loose pocket



	S	M	L	XL	2XL	3XL	5XL
P2100 MENS SLIM FIT							
GARMENT 1/2 CHEST (CM)	49.5	52	54.5	57	59.5	63.5	68
P2125 LADIES SLIM FIT	6	8	10	12	14	16	18 20 22 24
GARMENT 1/2 CHEST (CM)	42	44	46	48	50	53	55 58 62 65



CREW POLO

P400MS MENS SS
P400ML MENS LS
P400LS LADIES SS
P400LL LADIES LS

FABRIC

- 65% Polyester, 35% Cotton Pique
- 210 GSM
- UPF Rating - Very Good (light colours), Excellent (dark colours).

FEATURES

- Durable top-stitched armhole and twin needle sleeve/hem
- Knitted flat collar for sleek appearance
- Mens style includes loose pocket
- Ladies style features fashionable Y-placket design

LONG SLEEVE COLOURS Black, Navy, Charcoal

P400MS, P400ML MENS MODERN FIT	S	M	L	XL	2XL	3XL	5XL		
GARMENT 1/2 CHEST(CM)	52	56	58	62	65	71	79		
P400LS, P400LL LADIES MODERN FIT	8	10	12	14	16	18	20	22	24
GARMENT 1/2 CHEST(CM)	46.5	49	51.5	54	56.5	59	62	65	68

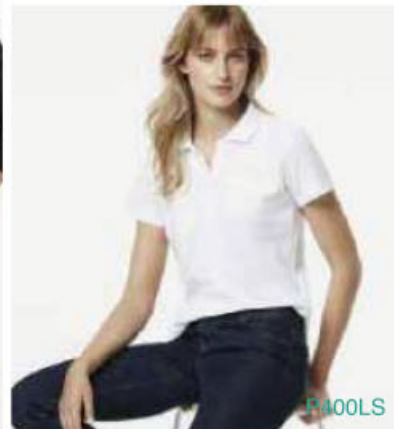


P400ML

P400LL



P400MS



P400LS

CREW POLO

Classic kids pique polo

P400KS KIDS

FABRIC

- 65% Polyester, 35% Cotton Pique
- 210 GSM
- UPF Rating - Very Good (light colours), Excellent (dark colours)

FEATURES

- Durable top-stitched armhole and twin needle sleeve / hem
- Knitted at collar for sleek appearance
- 3 Button placket with dyed-to-match pearlescent buttons
- Mens style includes loose pocket



P400KS KIDS MODERN FIT	4	6	8	10	12	14	16
GARMENT 1/2 CHEST(CM)	36	38	40	42	44	46	49



P400KS



P400KS

P400LS

P400MS

P400KS

JET POLO



P226MS MENS
P226LS LADIES

FABRIC

- 50% Cotton inner, 50% BIZ COOL™ Polyester Pique Outer
- 170 GSM
- UPF rating - Good

FEATURES

- Contrast hem panel detail
- New slim knitted stripe collar and cuff
- Loose pocket included



P226MS MENS MODERN FIT	S	M	L	XL	2XL	3XL	5XL
GARMENT 1/2 CHEST (CM)	52	55	58	62	65	71	79

P226LS LADIES MODERN FIT	8	10	12	14	16	18	20	22	24
GARMENT 1/2 CHEST (CM)	46.5	49	51.5	54	56.5	59	62	65	68



ACADEMY POLO

An everyday polo that's great for all seasons

P012MS MENS
P012LS LADIES

FABRIC

- BIZ COOL™ 100% Breathable Polyester
- 155 GSM
- UPF Rating - Excellent

FEATURES

- Excellent easy-care, anti-fade, anti-shrink durability
- Self fabric collar and button placket
- Contrast side inset and shoulder print feature elevates this classic style
- Mens has raglan style sleeve with flatlocking stitch detail
- Mens style includes loose pocket

P012MS MENS MODERN FIT	S	M	L	XL	2XL	3XL	5XL
GARMENT 1/2 CHEST (CM)	52	55	58	61	65	71	79

P012LS MENS MODERN FIT	8	10	12	14	16	18	20	22	24
GARMENT 1/2 CHEST (CM)	46.5	49	51.5	54	56.5	59	62	65	68



CHAD POLO

5402 MENS

FABRIC

- Heavy weight, 220 GSM
- 100% combed cotton (marles 15% viscose)

FEATURES

- Short sleeve collared polo shirt, 3 button placket, tonal buttons, split detail at sides
- Side seamed, double needle hems, preshrunk to minimise shrinkage



MENS CHAD POLO - 5402.

Model wears size MED and is 5'11" tall.

MEASUREMENT	SML	MED	LRG	XLG	2XL	3XL
Body Width (cm)	47	49.5	54	57.5	61	64.5
Body Length (cm)	74	76	78	80	82	84



AMY POLO

4402 LADIES

FABRIC

- Mid weight, 180 GSM, 28-singles
- 100% combed cotton (marles 15% viscose)

FEATURES

- Short sleeve collared polo shirt, 3 button placket, tonal buttons, split detail at sides
- Side seamed, double needle hems, preshrunk to minimise shrinkage



WO'S AMY POLO - 4402.

Model wears size MED and is 5'7" tall.

MEASUREMENT	XSM	SML	MED	LRG	XLG
Body Width (cm)	41	44.5	47	49.5	52
Body Length (cm)	59.5	60.5	61.5	63.5	65.5

PIQUE POLO

5411 MENS
4411 LADIES

FABRIC

- Heavy weight, 240 GSM, 20-singles
- 100% cotton (marles 15% viscose)

FEATURES

- Short sleeve collared polo shirt, 3 button placket, tonal buttons
- Side seamed, double needle hems, preshrunk to minimise shrinkage



MENS PIQUE POLO - 5411.

Model wears size MED and is 5'11" tall.

MEASUREMENT	SML	MED	LRG	XLG	2XL	3XL
Body Width (cm)	49.5	50	50.5	50	50.5	57
Body Length (cm)	70	74	77	79	81	83

WO'S PIQUE POLO - 4411.

MEASUREMENT	XSM	SML	MED	LRG	XLG
Body Width (cm)	42	44.5	47	49.5	52
Body Length (cm)	64.5	65.5	66.5	67.5	68.5

LEGEND POLO

Legend TRUEDRY fashion short sleeve polo



PS53 MENS
PS54 LADIES
PS53K KIDS

PS53 MENS EASY FIT	XS	S	M	L	XL	2XL	3XL	4XL	5XL
GARMENT 1/2 CHEST (CM)	51	53.5	56	58.5	61	63.5	66	68.5	71
PS54 LADIES MODERN FIT	8	10	12	14	16	18	20	22	24
GARMENT 1/2 CHEST (CM)	43.5	46	48.5	51	53.5	56	58.5	61	63.5
PS54K KIDS EASY FIT	4K	6K	8K	10K	12K	14K			
GARMENT 1/2 CHEST (CM)	33	36	39	42	45	48			

FABRIC

- 160gsm - TrueDry® Cotton Back Micromesh with Moisture-Wicking
- 60% Cotton / 40% Polyester

FEATURES

- Breathable mesh panels under arms and on sides
- Contrast panels and piping on shoulders and sleeves front and back



PODIUM SWIRL POLO

Eye Catching Contrast



BLACK/PEA GREEN (UPF 30)



CHARCOAL/ORANGE (UPF 15)



CHARCOAL/ORANGE (UPF 15)

7SWP MENS
7SWP1 LADIES

FABRIC

- Classic fit
- 100% Polyester for durability, 160gsm pique knit fabric

FEATURES

- Podium Cool™ moisture wicking fabric designed to help keep you cool and dry
- Complies with Standard AS 4399:2020 for UPF Protection
- Easy care, quick drying fabric

7SWP1 MENS EASY FIT	S	M	L	XL	2XL	3XL	4XL	5XL	
GARMENT 1/2 CHEST (CM)	51	53.5	56	58.5	61	64	67.5	71	
7SWP1 MENS EASY FIT	8	10	12	14	16	18	20	22	24
GARMENT 1/2 CHEST (CM)	43.5	46	48.5	51	53.5	56	58.5	61	63.5



LUCKY BAMBOO POLO

Bamboo charcoal eco fabric short sleeve polo

PS59 MENS
PS60 LADIES

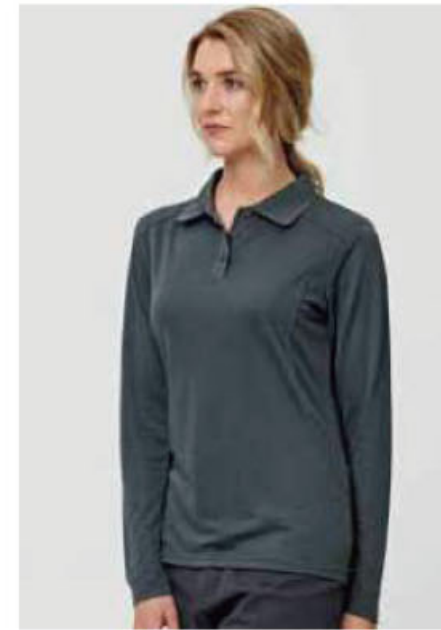
FABRIC
• 50% Poly / 50% Bamboo Charcoal - 165gsm

- FEATURES**
- Knitted collar
 - Silky soft
 - Breathable & moisture-wicking
 - Anti-bacterial & anti-fungal
 - Thermo-regulating
 - Hypoallergenic
 - Naturally De-Odorizes
 - Anti-Charge preventing
 - UPF 30+
 - Easy care / Iron free
 - Come with loose pocket



PS59 MENS EASY FIT	S	M	L	XL	2XL	3XL	4XL	5XL
GARMENT 1/3 CHEST (CM)	53.5	56	58.5	61	63.5	66	68.5	71

PS60 LADIES EASY FIT	8	10	12	14	16	18	20	22
GARMENT 1/3 CHEST (CM)	44.5	47	49.5	52	54.5	57	60	63



LUCKY BAMBOO LONG SLEEVE POLO

Bamboo Charcoal Eco Fabric long sleeve polo

PS89 MENS
PS90 LADIES

FABRIC
• 50% Poly / 50% Bamboo Charcoal - 165gsm

- FEATURES**
- Knitted collar
 - Silky soft
 - Breathable & moisture-wicking
 - Anti-bacterial & anti-fungal
 - Thermo-regulating
 - Hypoallergenic
 - Naturally De-Odorizes
 - Anti-Charge preventing
 - UPF 30+
 - Easy care / Iron free
 - Come with loose pocket

PS89 MENS EASY FIT	S	M	L	XL	2XL	3XL	4XL	5XL
GARMENT 1/3 CHEST (CM)	53.5	56	58.5	61	63.5	66	68.5	71

PS90 LADIES EASY FIT	8	10	12	14	16	18	20	22
GARMENT 1/3 CHEST (CM)	44.5	47	49.5	52	54.5	57	60	63



PODIUM 4 STRIPE S/S STRETCH POLO

7S4P MENS

FABRIC

- 93% Polyester for durability, and 7% Elastane for comfort
- 170gsm stretch fabric

FEATURES

- Podium Cool™ moisture wicking fabric to keep you cool and dry
- Complies with Standard AS 4399:2020 for UPF Protection (UPF 50+)
- Double sided jacquard collar and sleeve cuff with 4 contrast colour stripes
- 3 Button placket
- Straight hem with side split



BLACK/CHARCOAL (UPF 50+) BLACK/WHITE (UPF 50+) CHARCOAL/BLACK (UPF 50+) NAVY/WHITE (UPF 50+)

7S4P MENS EASY FIT	S	M	L	XL	2XL	3XL	4XL	5XL
GARMENT 1/2 CHEST (CM)	51	53.5	56	58.5	61	64	67.5	71

PODIUM PIPING POLO

Team necessity

7PIP MENS
7LPI LADIES

FABRIC

- 100% Polyester, 160gsm pique knit fabric

FEATURES

- Podium Cool™ moisture wicking fabric designed to help keep you cool and dry
- Ladies style features the placket in a distinctly stylish 1-button design
- Straight hem with side splits
- Easy care, quick drying fabric
- Complies with Standard AS 4399:2020 for UPF Protection



LADIES ONLY



7PIP MENS EASY FIT	2XS	XS	S	M	L	XL	2XL	3XL	4XL	5XL	6/7XL
GARMENT 1/2 CHEST (CM)	48.5	51	53.5	56	58.5	61	63.5	66.5	70	73.5	80.5
7LPI MENS EASY FIT	8	10	12	14	16	18	20	22	24		
GARMENT 1/2 CHEST (CM)	48.5	46	48.5	51	53.5	56	58.5	61	63.5		

TEE & SINGLET





ICE TEE

Be part of the coolest team in town with our 100% cotton tees

T10012 MENS
T10022 LADIES

FABRIC

- 100% Premium Combed Cotton
- Fluoro Orange and Yellow-Lime: 65% Polyester, 35% Cotton
- Grey Marle: 85% Cotton, 15% Viscose
- 185 GSM

FEATURES

- Twin needle sleeve and body hem
- Ribbed elastane neck band for stretch and shape recovery
- Easy tear-away label to facilitate promotional re-branding
- Side seams for reduced twisting and ease of alignment for printing
- Mobilo tape across shoulders for comfort and shape retention

T10012 MENS MODERN FIT	S	M	L	XL	2XL	3XL	5XL			
GARMENT 1/2 CHEST (CM)	54	56	58	62	66	71	79			
T10022 LADIES MODERN FIT	6	8	10	12	14	16	18	20	22	24
GARMENT 1/2 CHEST (CM)	44	46	48	50	52.5	55	57.5	60	66.5	71



ICE TEE

Long lasting and durable our 100% cotton tees go the distance



T10032 KIDS

FABRIC

- 100% Premium Combed Cotton
- Fluoro Orange and Yellow-Lime: 65% Polyester, 35% Cotton
- Grey Marle: 85% Cotton, 15% Viscose
- 185 GSM

FEATURES

- Twin needle sleeve and body hem
- Ribbed elastane neck band for stretch and shape recovery
- Easy tear-away label to facilitate promotional re-branding
- Side seams for reduced twisting and ease of alignment for printing
- Mobilo tape across shoulders for comfort and shape retention

T10032 KIDS MODERN FIT	2	4	6	8	10	12	14	16
GARMENT 1/2 CHEST (CM)	34	36	38	40	42	44	47	50





STAPLE MENS TEE

5001 MENS

FABRIC

- 100% Combed cotton (marles 15% polyester)
- Mid weight, 180 GSM

FEATURES

- Neck ribbing, side seamed, shoulder to shoulder tape
- Double needle hems, preshrunk to minimise shrinkage



MENS STAPLE TEE - 5001.
 Measurements are in cm unless stated otherwise

SIZE	XS	S	M	L	XL	XXL
NECK CIRCUMFERENCE	34	36	38	40	42	44
ARMHOLE CIRCUMFERENCE	27	28	30	32	34	36
ARMHOLE LENGTH	17	18	19	20	21	22

5001 MAPLE MENS TEE COLOUR PALETTE





MAPLE LADIES TEE

4001 LADIES

FABRIC

- 100% Combed cotton (marles 15% polyester)
- Mid weight, 180 GSM

FEATURES

- Neck ribbing, side seamed, shoulder to shoulder tape
- Double needle hems, preshrunk to minimise shrinkage



WO'S MAPLE TEE - 4001.

Mez's size chart 2/30 and a 5.6' fit

MEZ'S - 4001	CHW	KWT	UPH	L 4W	CL 08	7-01
Body Width (cm)	15.5	17	18.5	20	21.5	23
Body Length (cm)	25.5	24.5	23.5	22.5	21.5	20.5

4001 MAPLE LADIES TEE COLOUR PALETTE





CLASSIC L/S TEE

5071 MENS

FABRIC

- 100% combed cotton
- Heavy weight, 220 GSM, 22-singles

FEATURES

- Relaxed fit
- Crew neck
- Cuffed Sleeves
- Neck ribbing
- Side seamed
- Shoulder to shoulder tape
- Double needle hems
- Preshrunk to minimise shrinkage

MENS CLASSIC L/S TEE - 5071

MEASUREMENT	S/L	M/F	L/R	XL/R	XXL	XXXL
Body Width (cm)	48.5	52.5	56.5	60.5	64.5	68.5
Body Length (cm)	72	75	78	81	84	87



DICE L/S TEE

4056 LADIES

FABRIC

- 100% carded cotton (marles 15% viscose)
- Heavy weight, 200 GSM, 24-singles

FEATURES

- Relaxed fit
- Crew neck
- Cuffed Sleeves
- Wide neck ribbing
- Side seamed
- Shoulder to shoulder tape
- Double needle hems
- Preshrunk to minimise shrinkage

WO'S DICE L/S TEE - 4056

WOMEN'S DICE L/S TEE - 4056

MEASUREMENT	XS/M	S/L	M/F	L/R	XL
Body Width (cm)	41.5	43	45.5	48	50.5
Body Length (cm)	63	64	65	66	67





BARNARD TANK

5025 MENS

FABRIC

- 100% Combed cotton (marles 15% viscose)
- 130 GSM

FEATURES

- Sleeveless tank, raw armhole edges
- Neck ribbing, double needle hems
- Side seamed, preshrunk to minimise shrinkage

MENS BARNARD TANK - 5025.

100% COMBED COTTON (MARLES 15% VISCOSE) 130 GSM

MEASUREMENT	XS/S	S/M	M/L	L/LG	XLG	XXL
Body length (cm)	65	66	67	68	69	70
Body length (inch)	26	26	26	27	27	28



BROOKLYN TANK

4043 LADIES

FABRIC

- 100% Combed cotton (marles 15% viscose)
- 130 GSM

FEATURES

- Sleeveless tank, raw armhole edges
- Neck ribbing, double needle hems
- Side seamed, preshrunk to minimise shrinkage

WO'S BROOKLYN TANK - 4043.

100% COMBED COTTON (MARLES 15% VISCOSE) 130 GSM

MEASUREMENT	XSM	SNL	MED	LNG	XLG
Body length (cm)	62	63	64	65	66
Body length (inch)	24	25	25	26	26



LEGEND TEE

Legend TRUEDRY fashion short sleeve tee shirt



TS53 MENS
TS54 LADIES
TS53K KIDS

FABRIC

- 160gsm - TrueDry® Cotton Back Micromesh with Moisture-Wicking
- 60% Cotton / 40% Polyester

FEATURES

- Breathable mesh panels under arms and on sides
- Contrast panels and piping on shoulders and sleeves - front and back

TS53 MENS EASY FIT	XS	S	M	L	XL	2XL	3XL	4XL	5XL
GARMENT 1/2 CHEST (CM)	51	53.5	56	58.5	61	63.5	66	68.5	71
TS54 LADIES MODERN FIT	8	10	12	14	16	18	20	22	24
GARMENT 1/2 CHEST (CM)	43.5	46	48.5	51	54	57	60	63	66
TS54K KIDS EASY FIT	4K	6K	8K	10K	12K	14K			
GARMENT 1/2 CHEST (CM)	36	38.5	41	43.5	46	48.5			



- BLACK/AQUA
- BLACK/ASH
- BLACK/RED
- BLACK/WHITE
- NAVY/AQUA
- NAVY/GOLD
- NAVY/RED
- NAVY/SKY BLUE
- NAVY/WHITE
- RED/WHITE
- ROYAL/GOLD
- ROYAL/WHITE
- WHITE/NAVY



TEAMMATE TEE

CoolDry mesh contrast tee

TS12 UNISEX
TS12K KIDS

FABRIC

- CoolDry® Mesh
- 160gsm
- 60% Cotton / 40% Polyester

FEATURES

- Contrast panel on sides

TS12 UNISEX EASY FIT	2XS	XS	S	M	L	XL	2XL	3XL	4XL	5XL
GARMENT 1/3 CHEST (CM)	48.5	51	53.5	56	58.5	61	63.5	66	68.5	71

TS12K KIDS EASY FIT	6K	8K	10K	12K	14K
GARMENT 1/3 CHEST (CM)	37	40	43	46	49



TEAMMATE SINGLET

CoolDry mesh contrast singlet

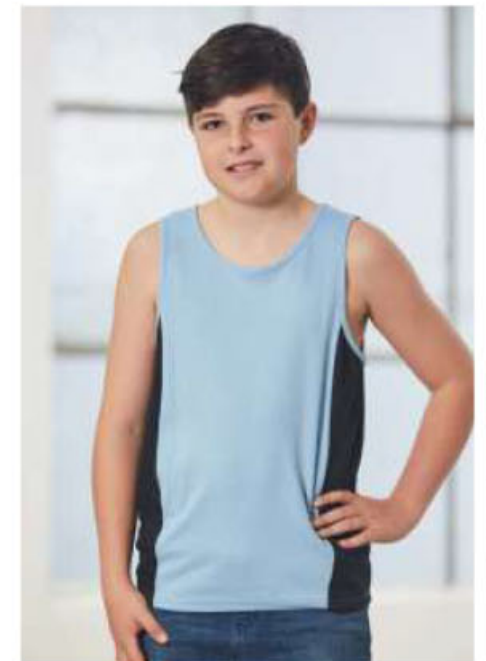
TS19A MENS
TS17 LADIES
TS19K KIDS

FABRIC

- CoolDry® Mesh
- 160gsm
- 60% Cotton / 40% Polyester

FEATURES

- Contrast panel on sides
- Round neck



TS19A MENS EASY FIT	XS	S	M	L	XL	2XL	3XL
GARMENT 1/3 CHEST (CM)	50	52.5	55	57.5	60	62.5	65

TS17 LADIES MODERN FIT	8	10	12	14	16	18
GARMENT 1/3 CHEST (CM)	42.5	45	47.5	50	52.5	55

TS19K KIDS EASY FIT	6K	8K	10K	12K	14K
GARMENT 1/3 CHEST (CM)	38.5	41.0	43.5	46.0	48.5

JACKET & VEST





CAMEL



ARMY



BLACK



BLACK



BOMBER JACKET

5506 MENS

FABRIC

- 100% cotton drill
- 300 GSM

FEATURES

- Shell jacket, metal anti-black YKK zipper
- Two side pockets
- Ribbed collar
- Hem & cuffs, preshrunk to minimise shrinkage

MENS BOMBER JACKET - 5506.

Model wears size M and is 6'1" tall

MEASUREMENT	SXM	SML	MED	LRG	XLG	2XL	3XL
Body Width (cm)	52	55	58	61	64	67	70
Body Length (cm)	68.5	71	73.5	76	78.5	81	83.5

SECTION ZIP JACKET

5508 MENS

FABRIC

- 100% polyester rip-stop
- 90 GSM

FEATURES

- Waterproof zips, adjustable elastic drawcords at hem and hood
- Packable, rubber headphone patch, sealed seams
- Water resistant

MENS SECTION ZIP JACKET - 5508.

Model wears size M and is 6'1" tall

MEASUREMENT	SXM	SML	MED	LRG	XLG	3XL
Body Width (cm)	51	54	57	60	63	66
Body Length (cm)	74	76	78	80	82	84



ROSEWALL SOFTSHELL SPORTS JACKET

JK15 MENS
JK16 LADIES

FABRIC

- 290gsm - Bonded Softshell™
- Shell face: 96% polyester, 4% elastane
- Shell back: 100% polyester

FEATURES

- Subtle, stylish and contemporary softshell jacket.
- Contrasting polar fleece inners, lightweight, water and wind resistant
- Longer back tail creates extra warmth

JK15 MENS EASY FIT	S	M	L	XL	2XL	3XL	4XL	5XL
GARMENT ½ CHEST (CM)	57.5	60	62.5	65	67.5	70	72.5	75
JK16 LADIES MODERN FIT	8	10	12	14	16	18		
GARMENT ½ CHEST (CM)	50	52.5	55	57.5	60	63		



BLACK. BLACK BLACK. CYAN BLACK. ORANGE BLACK. RED NAVY. NAVY

APEX LIGHTWEIGHT SOFTSHELL JACKET

J740M MENS
J740L LADIES

FABRIC

- Outer: 100% Polyester
- Inner: Bonded textured fleece lining

FEATURES

- Lightly water repellent and wind resistant
- Stand up collar with soft chin guard
- Zippers can be teamed with J744 Zippies to accent your logo
- Scalloped longer back tail for added warmth



BLACK NAVY GREY



J740M MENS MODERN FIT	S	M	L	XL	2XL	3XL	5XL	
GARMENT ½ CHEST (CM)	56	56	61	63.5	66	70	78	
J740L LADIES MODERN FIT	XS	S	M	L	XL	2XL		
GARMENT ½ CHEST (CM)	45.5	49	52.5	56	59.5	63		

STEALTH TECH HOODIE

Hybrid lightweight hoodie jacket



J515M MENS
J515L LADIES

FABRIC

- Front Body: 100% Quilted Nylon Ripstop
- Back/Sleeves: 95% Polyester, 5% Elastane Stretch
- Bonded Fleece
- Insulation: 100% Hi-Loft Polyfil

FEATURES

- Thumb loops to keep hands warm
- Insulated quilting on chest front for lightweight warmth
- Contrast front zipper and pockets
- Stand up collar with intergrated bonded fleece hoody

J515M MENS MODERN FIT	S	M	L	XL	2XL	3XL	5XL
GARMENT 1/2 CHEST (CM)	55.5	57.5	59.5	61.5	63.5	68.5	78.5
J515L LADIES MODERN FIT	XS	S	M	L	XL	2XL	
GARMENT 1/2 CHEST (CM)	46.5	48.5	53.5	56.5	60.5	63.5	

OSLO JACKET

J638M MENS
J638L LADIES

FABRIC

- Outer: 65% Polyester, 35% Cotton water repellent jersey fleece
- Inner: Bonded 100% Polyester fleece with inner membrane

FEATURES

- Bomber style with knitted ribbed hem and cuff
- Removable hood, high collar with chin guard
- Taped water proof right chest pocket
- Waterproof front and pocket zippers

J638M MENS MODERN FIT	S	M	L	XL	2XL	3XL
GARMENT 1/2 CHEST (CM)	57	59	61	63	65	70
J638L LADIES MODERN FIT	S	M	L	XL	2XL	
GARMENT 1/2 CHEST (CM)	49	52.5	56	59.5	63	

BIZ TECH™ TECHNOLOGY FEATURES
Water Repellent rating - 6,000mm
Breathability - 1,000g/m ²
Windproof



GREY/BLACK





LAYER SOFT SHELL JACKET

Venture outdoors

3LJ MENS
3LJ1 LADIES

FABRIC

- 94% Polyester for durability, and 6% Elastane for stretch
- 325gsm three-layer bonded soft shell fabric

FEATURES

- Four-way stretch fabric for flexibility of movement
- Micro fleece lining
- Two zip-up pockets and an internal mobile phone pocket
- Adjustable elastic hem with toggles
- Waterproof to 20,000mm rating, Breathability 1,000mm
- Kids Sizes only available in Navy
- Slim Fit



BLACK



GREY



NAVY

3LJ MENS MODERN FIT	S	M	L	XL	2XL	3XL	4XL	5XL
GARMENT 1/3 CHEST (CM)	56	58.5	61	63.5	66	68.5	71.5	74.5
3LJ1 LADIES MODERN FIT	8	10	12	14	16	18	20	22
GARMENT 1/3 CHEST (CM)	49.5	51.5	53.5	56	58.5	61	63.5	66

PUFFER CONTRAST JACKET

3ACJ UNISEX

FABRIC

- Polyester pongee shell
- Collar lined with microfleece for added warmth

FEATURES

- Extra thick polyfill with horizontal design lines
- Chunky front zipper
- Two front pockets with contrast zip closure
- Embroidery zipper



BLACK / AQUA



BLACK / ORANGE



BLACK / RED

3ACJ UNISEX MODERN FIT	2XS	XS	S	M	L	XL	2XL	3XL	4XL	5XL
GARMENT 1/3 CHEST (CM)	55	57.5	60	62.5	65	67.5	70	72.5	75	77.5



ADVENTURE PUFFER JACKET

3ADJ UNISEX

FABRIC

- Polyester pongee shell and contrast polyester lining

FEATURES

- Extra thick poly fill with horizontal design lines
- Chunky front zipper
- Zip-through collar
- Two front pockets with water shedding pocket flaps
- Back drop tail
- Embroidery Zipper
- Urban Fit



BLACK / GREY



NAVY / GREY

3ADJ UNISEX MODERN FIT	4XS	3XS	2XS	XS	S	M	L	XL	2XL	3XL	4XL	5XL
GARMENT 1/3 CHEST (CM)	48	52	55	57.5	60	62.5	65	67.5	70	72.5	75	77.5

ROSEWALL SOFT SHELL VEST

JK45 MENS
JK46 LADIES



BLACK.CYAN



BLACK.ORANGE



BLACK.RED

FABRIC

- Bonded Softshell, 290gsm
- Shell face 96% Polyester, 4% Elastane
- Shell back 100% Polyester

FEATURES

- Contrast polar fleece inners, with zip pockets and longer back tail for extra warmth
- Water and wind resistant

JK45 MENS MODERN FIT	S	M	L	XL	2XL	3XL	4XL	5XL
GARMENT 1/2 CHEST (CM)	56	58.5	61	63.5	66	68.5	71	73.5
JK46 LADIES MODERN FIT	8	10	12	14	16	18		
GARMENT 1/2 CHEST (CM)	48.5	51	53.5	56	58.5	61		

LAYER SOFT SHELL VEST

Venture outdoors

3JLV MENS
3JLV1 LADIES

FABRIC

- 94% Polyester for durability, and 6% Elastane for stretch
- 290gsm two-layer bonded soft shell

FEATURES

- Four-way stretch fabric for flexibility of movement
- Micro fleece lining
- Two zip-up pockets and an internal mobile phone pocket
- Adjustable elastic hem with toggles
- Urban Fit

3JLV MENS SLIM FIT	S	M	L	XL	2XL	3XL	4XL	5XL
GARMENT 1/2 CHEST (CM)	56	58.5	61	63.5	66	68.5	71.5	74.5
3JLV LADIES URBAN FIT	6	8	10	12	14	16	18	20 22 24
GARMENT 1/2 CHEST (CM)	47.5	49.5	51.5	53.5	56	58.5	61	63.5 66 68.5



GENEVA VEST



BLACK / GRAPHITE



BLACK / CYAN



NAVY / GRAPHITE



BLACK / RED

J404M MENS
J404L LADIES

FABRIC

- Outer: 100% Polyester
- Inner: Bonded Contrast textured micro-ribbed fleece lining

FEATURES

- Stand up collar with soft chin guard
- Contrast side zippered pockets with toggle's
- Scalloped longer back tail



J404M MENS MODERN FIT	S	M	L	XL	2XL	3XL	5XL
GARMENT 1/3 CHEST (CM)	57	59	61	63	65	70	78

J404L LADIES MODERN FIT	S	M	L	XL	2XL
GARMENT 1/3 CHEST (CM)	49	52.5	56	59.5	63



APEX VEST

J830M MENS
J830L LADIES

FABRIC

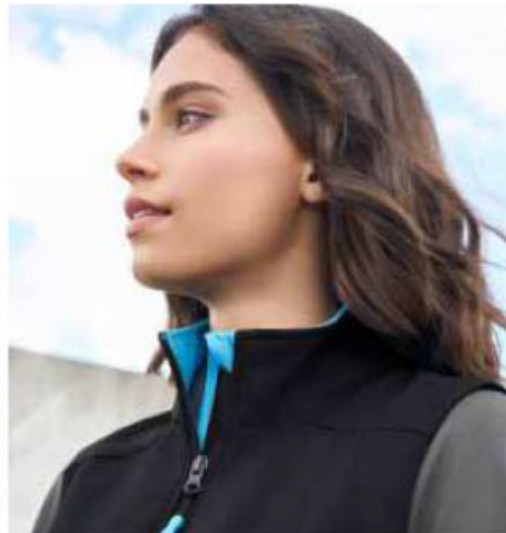
- Outer: 100% Polyester
- Lining: Bonded Textured fleece lining

FEATURES

- Lightly water repellent and wind resistant
- Stand up collar with soft chin guard
- Scalloped longer back tail for added warmth

J830M MENS FIT	S	M	L	XL	2XL	3XL	5XL
GARMENT 1/3 CHEST (CM)	56	58.5	61	63.5	66	70	78

J830L LADIES FIT	XS	S	M	L	XL	2XL
GARMENT 1/3 CHEST (CM)	45.5	49	52.5	56	59.5	63



NAVY



BLACK



GREY



STEALTH TECH VEST

J616M MENS
J616L LADIES

FABRIC

- Front Body: 100% Quilted Nylon Ripstop
- Back: 95% Polyester, 5% Elastane Stretch Bonded Fleece
- Insulation: 100% Hi-loft Polyfill

FEATURES

- Insulated quilting on chest front for lightweight warmth
- Contrast front zipper and pockets
- Stand up collar with chin guard

J616M MENS MODERN FIT	S	M	L	XL	2XL	3XL	5XL
GARMENT 1/3 CHEST (CM)	55.5	57.5	59.5	61.5	63.5	68.5	78.5
J616L LADIES MODERN FIT	XS	S	M	L	XL	2XL	
GARMENT 1/3 CHEST (CM)	46.5	49.5	53.5	56.5	60.5	63.5	



BLACK / LIME



BLACK / RED



BLACK / CYAN



BLACK / SILVER GREY



BLACK / MAGENTA



PUFFER CONTRAST VEST

3ACV UNISEX

FABRIC

- Polyester pongee shell
- Collar lined with microfleece for added warmth

FEATURES

- Extra thick polyfill with horizontal design lines
- Chunky front zipper
- Two front pockets with contrast zip closure
- Embroidery zipper



BLACK / AQUA



BLACK / PEA GREEN



BLACK / RED



NAVY / LT BLUE



3ACV UNISEX MODERN FIT	2XS	XS	S	M	L	XL	2XL	3XL	4XL	5XL
GARMENT 1/3 CHEST (CM)	55	57.5	60	62.5	65	67.5	70	72.5	75	77.5

ADVENTURE PUFFER VEST

3ADV MENS
3ADV1 LADIES

FABRIC

- Polyester pongee shell and contrast polyester lining

FEATURES

- Extra thick poly fill with horizontal design lines
- Chunky front zipper
- Zip-through collar
- Two front pockets with water shedding pocket flaps
- Back drop tail
- Embroidery Zipper
- Urban Fit



BLACK / GREY



NAVY / GREY



3ADV MENS MODERN FIT	2XS	XS	S	M	L	XL	2XL	3XL	4XL	5XL
GARMENT 1/3 CHEST (CM)	55	57.5	60	62.5	65	67.5	70	72.5	75	77.5
3ADV1 LADIES MODERN FIT	08	10	12	14	16	18	20	22	24	
GARMENT 1/3 CHEST (CM)	52.5	54.5	57	59.5	62	64.5	67	69.5	72	

SUPPLY CREW

5100 MENS
4100 LADIES

FABRIC

- 80% cotton 20% polyester anti-pill fleece
- Mid weight, 290 GSM

FEATURES

- Relaxed fit
- Easy tear-out label
- Raglan sleeves, sleeve cuff & neck ribbing, preshrunk to minimise shrinkage



MENS SUPPLY CREW - 5100.

MEASUREMENT	XSM	SM	MED	LRG	XL	2XL
Body Width (cm)	49.5	52.2	55.5	59.5	61.5	64.5
Body Length (cm)	69	72	75	78	81	84

WO'S SUPPLY CREW - 4100.

MEASUREMENT	XSM	SM	MED	LRG	XL
Body Width (cm)	48	51.5	54	56.5	59
Body Length (cm)	68	72.5	75.5	78.5	81

HALF ZIP CREW

5125 MENS
4125 LADIES

FABRIC

- 80% cotton 20% recycled polyester anti-pill fleece
- Heavy weight, 350 GSM

FEATURES

- Relaxed fit
- Mock neck, silver SBS zip at front placket
- Sleeve cuff & hem ribbing, preshrunk to minimise shrinkage



MENS HALF ZIP CREW - 5125.

MEASUREMENT	SM	MD	LRG	2LR	2XL
Body Width (cm)	52	56	59	61	64
Body Length (cm)	72.5	75	77.5	80	82.5

WO'S HALF ZIP CREW - 4125.

Model wears size SM, and is 5'7" tall

MEASUREMENT	XSM	SM	MED	LRG	XL
Body Width (cm)	53.5	56	58.5	61	63.5
Body Length (cm)	67	69	70	72	74

PASSION FLEECE HOODIE



FL09 MANS
LADIES

FABRIC
• Fleece, 320gsm - 35% Cotton, 65% Polyester

FEATURES
• Contrast colour inside hood lining and draw strings
• Close front with kangaroo pocket
• A top design for work & outdoor activities

FL09 MENS EASY FIT	XS	S	M	L	XL	2XL	3XL	5XL
GARMENT 1/3 CHEST (CM)	55.5	58	60.5	63	65.5	68	70.5	75.5
FL09 LADIES EASY FIT	12	14	16	18				
GARMENT 1/3 CHEST (CM)	55.5	58	60.5	63				



ARMY GREEN / BLACK/BLACK GREY/GREY BLACK/GOLD GREY/NAVY MARL CHARCOAL / MARL CHARCOAL



NAVY/NAVY NAVY/RED RED/RED ROYAL/ROYAL WHITE/WHITE

CONTRAST FLEECY HOODIE



CHUNKY DRAWCODE

3CFH ADULTS
3CFH KIDS

FABRIC
• 80% Cotton / 20% Polyester
• Cotton rich CVC Fleece 310gsm

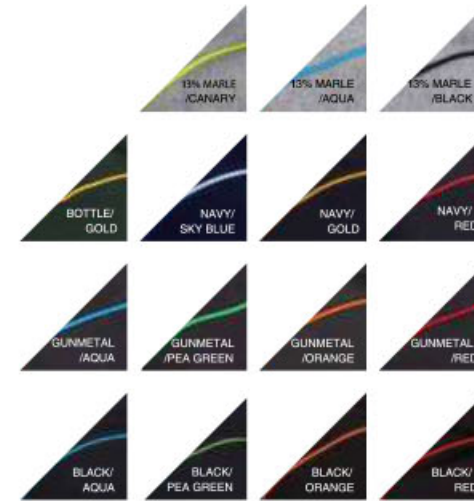
FEATURES
• Front kangaroo pockets
• 2x2 rib cuffs and hem
• No drawcord on Kids sizes



No Drawcord for Kids sizes



3CFH ADULTS CLASSIC FIT	S	M	L	XL	2XL	3XL	4XL	5XL
GARMENT 1/3 CHEST (CM)	57.5	60	62.5	65	67.5	70	72.5	75
3CFH KIDS CLASSIC FIT	4	6	8	10	12	14		
GARMENT 1/3 CHEST (CM)	40	42.5	45	48	51.5	55		



FLEECE INNER FABRIC



KANGAROO POCKET

FLEECY HOODIE



3FH UNISEX
3KFH KIDS

FABRIC
• 80% Cotton / 20% Polyester
• Cotton rich CVC Fleece 310gsm

FEATURES
• 2x2 rib cuffs round hem for added comfort
• Front kangaroo pockets
• Fully lined hood
• 2XS, XS only available in All colours except Bottle
• 6/7XL, 8/9XL only in Black77

3FH ADULTS CLASSIC FIT	2XS	XS	S	M	L	XL	2XL	3XL	4XL	5XL	6/7XL	8/9XL
GARMENT 1/3 CHEST (CM)	51.5	55	57.5	60	62.5	65	67.5	70	72.5	75	80	85
3KFH KIDS CLASSIC FIT	4	6	8	10	12	14						
GARMENT 1/3 CHEST (CM)	40	42.5	45	48	51.5	55						



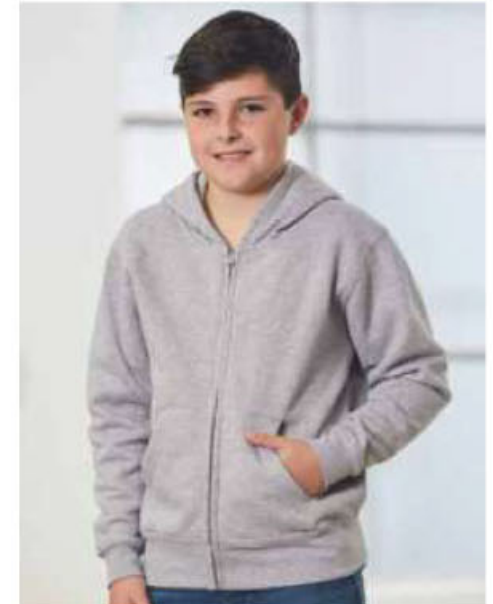
DOUBLE BAY FLEECE FULL ZIP HOODIE



FL03 MENS
FL04 LADIES
FL03K KIDS

FABRIC
• 340gsm
• Fleece, 80% Cotton, 20% Polyester

FL03 MENS EASY FIT	XS	S	M	L	XL	2XL	3XL	5XL
GARMENT 1/3 CHEST (CM)	57.5	60	62.5	65	67.5	70	72.5	77.5
FL04 LADIES MODERN FIT	8	10	12	14	16	18		
GARMENT 1/3 CHEST (CM)	46.5	49.0	51.5	54.0	56.5	59.0		
FL03K KIDS EASY FIT	6K	8K	10K	12K	14K			
GARMENT 1/3 CHEST (CM)	42.0	45.0	48.0	51.0	54.0			



MT BULLER PULLOVER



PF01 UNISEX
PF11 KIDS

FABRIC

- Anti-Pill Polar Fleece 320gsm
- 100% Polyester

FEATURES

- Draw cord, toggle & side pockets
- A basic for an active lifestyle
- Providing warmth and flexibility for winter wear
- Favourite style for skiers, mariners & casual street wear

PF01 UNISEX EASY FIT	2XS	XS	S	M	L	XL	2XL	3XL	4XL	5XL
GARMENT 1/2 CHEST (CM)	55.0	57.5	60.0	62.5	65.0	67.5	70.0	72.5	75.0	77.5
PF11 KIDS EASY FIT	4K	6K	8K	10K	12K	14K	16K			
GARMENT 1/2 CHEST (CM)	39.0	42.5	46.0	49.5	53.0	56.5	60.0			



FROST FLEECE JACKET



PF07 MENS
PF08 LADIES

FABRIC

- Bonded Polar Fleece 350gsm - 100% Polyester

FEATURES

- Made from high quality Anti-Pill Polar Fleece
- Extra deep pockets to keep hands warm

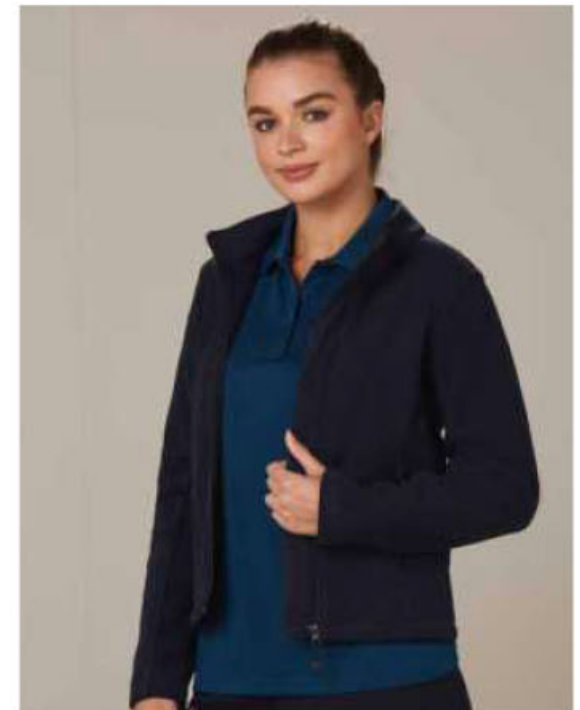
PS07 MENS SLIM FIT	S	M	L	XL	2XL	3XL	4XL	5XL
GARMENT 1/2 CHEST (CM)	51.5	54	56.5	59	61.5	64	66.5	69
PS08 LADIES SLIM FIT	8	10	12	14	16	18		
GARMENT 1/2 CHEST (CM)	43	45.5	48	50.5	53	55.5		



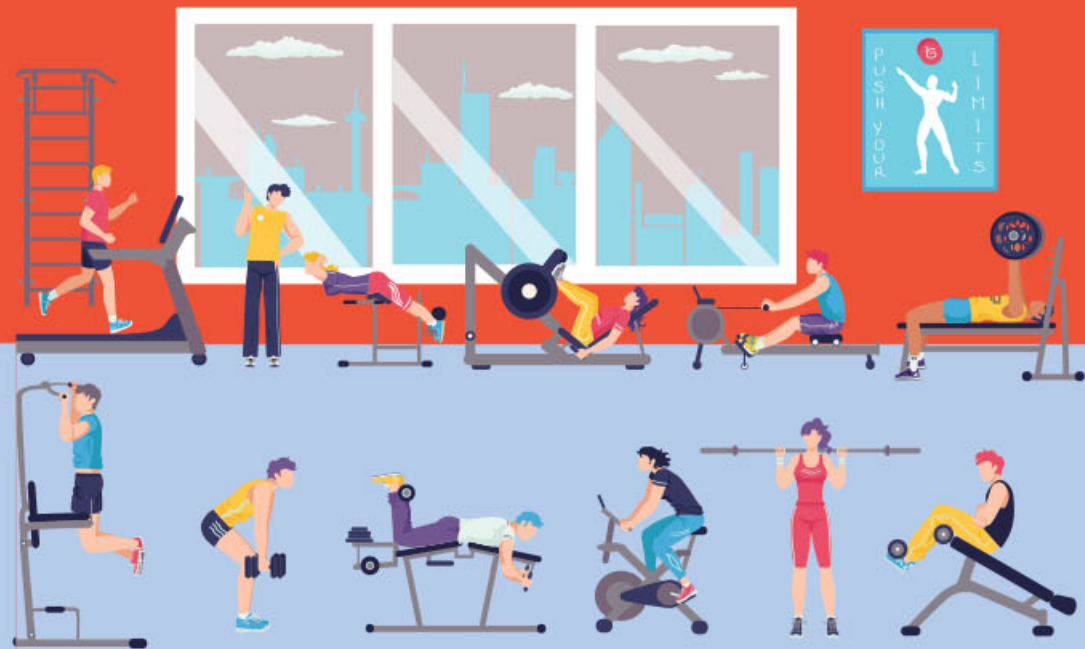
BLACK



NAVY



SPORTS & ENTERTAINMENT



REVOLUTION

FIND YOUR AWESOME WITH FIT
FOR PURPOSE ACTIVE GEAR.

POLO

SPORTS PANT

SPORTS BAG



TEE
SPORTS JACKET
SPORTS PANT
TACTIC SHORT

SINGLET

CAP
TEE



RAZOR TEE

BIZ COOL™ V-neck tee

T406MS MENS
T406KS KIDS

FABRIC

- BIZ COOL™ 100% Polyester Sports Interlock
- 155 GSM
- UPF Rating - Excellent

FEATURES

- Grid mesh underarm panels for breathability
- Unique sleeve print feature
- Contrast panels and piping
- Self-fabric V-neck band

T406MS MENS MODERN FIT	S	M	L	XL	2XL	3XL	5XL
GARMENT 1/2 CHEST (CM)	52	55	58	62	65	71	79

T406KS KIDS MODERN FIT	4	6	8	10	12	14	16
GARMENT 1/2 CHEST (CM)	36	38	40	42	44	46	49



RAZOR SINGLET

BIZ COOL™ sports singlet

SG407M MENS
SG407L LADIES

FABRIC

- BIZ COOL™ 100% Polyester Sports Interlock
- 155 GSM
- UPF Rating - Excellent

FEATURES

- Grid mesh underarm panels for breathability
- Unique sleeve print feature
- Contrast panels and piping
- V-neck and armhole binding
- Ladies racer back and shaped styling

SG407M MENS MODERN FIT	S	M	L	XL	2XL	3XL	5XL
GARMENT 1/2 CHEST (CM)	50	53	56	59	62	65	73

SG407L LADIES MODERN FIT	8	10	12	14	16	18	20
GARMENT 1/2 CHEST (CM)	44	46	48	50	52	54	56



NAVY/
WHITE



NAVY/
SKY



ROYAL/
WHITE



RED/
WHITE



BLACK/
WHITE



BLACK/
RED



GREY/
FL. LIME



ASH/
BLACK





RAZOR POLO

Stand out with distinctive design and unique print details

P405MS MENS
P405LS LADIES
P405KS KIDS

FABRIC

- BIZ COOL™ 100% Polyester Sports Interlock
- 155 GSM
- UPF Rating - Excellent

FEATURES

- Grid mesh underarm panels for breathability
- Unique sleeve print feature
- Contrast panels and piping
- Knitted collar with contrast placket
- Mens style includes loose pocket

P405MS MENS MODERN FIT	S	M	L	XL	2XL	3XL	5XL		
GARMENT 1/2 CHEST (CM)	52	55	58	62	65	71	79		
P405LS LADIES MODERN FIT	8	10	12	14	16	18	20	22	24
GARMENT 1/2 CHEST (CM)	46.5	49	51.5	54	56.5	59	62	65	68
P405KS KIDS MODERN FIT	4	6	8	10	12	14	16		
GARMENT 1/2 CHEST (CM)	36	38	40	42	44	46	49		



RAZOR JACKET & PANT

BIZ COOL™ team jacket & sports pant

J408M ADULTS JACKET
J408K KIDS JACKET

TP409M ADULTS PANT
TP409K KIDS PANT

FABRIC

- Outer Shell: 100% Polyester Jacquard
- Lining: BIZ COOL™ 100% Anti-Snag Diamond Mesh
- UPF Rating - Excellent

JACKET FEATURES

- Grid mesh underarm panels for breathability
- Stow-away hood with print feature
- Unique sleeve print feature with adjustable cuff fastenes
- 2 Side zippered pockets
- Contrast panels, piping and inside placket

PANT FEATURES

- Grid mesh underarm panels for breathability
- Stow-away hood with print feature
- Unique sleeve print feature with adjustable cuff fastenes
- 2 Side zippered pockets
- Contrast panels, piping and inside placket



J408M ADULTS MODERN FIT	XS	S	M	L	XL	2XL	3XL	5XL
GARMENT 1/2 CHEST (CM)	58	60	62	64	66	68	70	74
J408K KIDS MODERN FIT	4-6	8	10	12	14			
GARMENT 1/2 CHEST (CM)	45	48	51	54	57			

TP409M ADULTS MODERN FIT	XS	S	M	L	XL	2XL	3XL	5XL
GARMENT 1/2 WAIST STRETCHED (CM)	48	50	52	54	56	60	66	78
GARMENT 1/2 WAIST RELAXED (CM)	31	33	35	37	39	42	48	60
TP409K KIDS MODERN FIT	4-6	8	10	12	14			
GARMENT 1/2 WAIST STRETCHED (CM)	40	43	46	49	52			
GARMENT 1/2 WAIST RELAXED (CM)	26	28	30	32	34			



BLACK NAVY

RENEGADE TEE

BIZ COOL™ mesh panels provide targeted ventilation and motion activated cooling

T701MS MENS
T701LS LADIES
T701KS KIDS

FABRIC

- BIZ COOL™ 100% Micro Polyester
- 155 GSM
- UPF Rating - Excellent

FEATURES

- Silver reflective trims help you stand out
- Dynamic design with bold colour contrast
- Mesh panels for greater ventilation where you need it most
- Comfortable crew neck for Men and Kids
- Flattering V-neck for Women



T701MS MENS MODERN FIT	S	M	L	XL	2XL	3XL	5XL			
GARMENT 1/2 CHEST (CM)	52.5	55.5	58.5	62.5	66.5	70.5	78.5			
T701LS LADIES MODERN FIT	6	8	10	12	14	16	18	20	22	24
GARMENT 1/2 CHEST (CM)	44	46.5	49	51.5	54	56.5	59	62	65	68
T701KS KIDS MODERN FIT	4	6	8	10	12	14	16			
GARMENT 1/2 CHEST (CM)	36	38	40	42	44	46	49			





RENEGADE SINGLET

BIZ COOL™ singlet designed for a full range of motion whatever your activity

SG702M MENS
SG702L LADIES

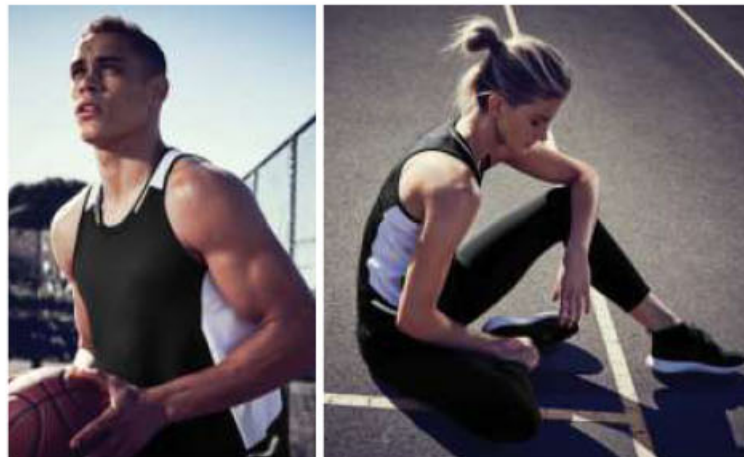
FABRIC

- BIZ COOL™ 100% Micro Polyester
- 155 GSM
- UPF Rating - Excellent

FEATURES

- Silver reflective trims help you stand out
- Dynamic design with bold colour contrast
- Mesh panels for greater ventilation where you need it most
- Comfortable crew neck for Men
- Flattering V-neck and racer back design for Women

SG702M MENS MODERN FIT	XS	S	M	L	XL	2XL	3XL	5XL
GARMENT 1/2 CHEST (CM)	47	50	53	56	59	62	65	73
SG702L LADIES MODERN FIT	6	8	10	12	14	16	18	20
GARMENT 1/2 CHEST (CM)	42	44	46	48	50	52	54	56



RENEGADE HOODIE

Brushed fleece team hoodie keeps you warm during early morning training or when the weather turns cool

SW710M ADULTS
SW710K KIDS

FABRIC

- Durable 65% Polyester, 35% Cotton Brushed Fleece
- 320 GSM

FEATURES

- Silver reflective trims help you stand out
- Dynamic design with bold colour contrast
- Modern pullover with a 1/2 zip
- Mesh lined hood and side pocket details
- Adults style features hood with 'shoelace' drawstring
- No drawstring on Kids – keeping kids safe
- Knitted ribbed band on hem and cuff

SW710M ADULTS EASY FIT	XS	S	M	L	XL	2XL	3XL	5XL
GARMENT 1/2 CHEST (CM)	54	57	60	63	66	70	74	82
SW710K KIDS EASY FIT	4	6	8	10	12	14	16	
GARMENT 1/2 CHEST (CM)	38	39	42	45	48	51	54	



FLASH JACKET & PANT

J3150 ADULTS JACKET
J3150B KIDS JACKET

- FABRIC**
- Outer: 100% Micro Fibre Jacquard Ripstop with Micro Fibre panels
 - Body Inner: Single Jersey Lining
 - Sleeve Inner: 100% Polyester Taffeta Lining

- FEATURES**
- Raglan sleeve top with flash splice and twin stripe detail
 - Full zip front with 2 zippered pockets
 - Zipper access for embroidery
 - Elasticated sleeve cuffs with adjustable fasteners



J3150 ADULTS MODERN FIT	XS	S	M	L	XL	2XL	3XL	5XL
GARMENT 1/2 CHEST (CM)	58	60	62	64	66	68	70	74
J3150B KIDS MODERN FIT	4-6	8	10	12	14			
GARMENT 1/2 CHEST (CM)	45	48	51	54	57			

TP3160 ADULTS PANT
TP3160B KIDS PANT

- FABRIC**
- Outer: 100% Micro Fibre Jacquard Ripstop with Micro Fibre panels and piping detail
 - Upper leg inner: Single jersey lining
 - Lower leg inner: 100% Polyester Taffeta lining

- FEATURES**
- Elasticated waist with drawstring
 - 2 Open side pockets and back zipper pocket
 - Bottom leg zipper to approximate knee height to allow pants to be pulled over boots/trainers

TP3160 ADULTS MODERN FIT	XS	S	M	L	XL	2XL	3XL	5XL
GARMENT 1/2 WAIST STRETCHED (CM)	48	50	52	54	56	60	66	78
GARMENT 1/2 WAIST RELAXED (CM)	31	33	35	37	39	42	48	60
TP3160B KIDS MODERN FIT	4-6	8	10	12	14			
GARMENT 1/2 WAIST STRETCHED (CM)	40	43	46	49	52			
GARMENT 1/2 WAIST RELAXED (CM)	26	28	30	32	34			



MENS BSAKETBALL SINGLET

CT1205 MENS

- FABRIC**
- 100% Polyester Breezeway Fabric (Pique Knit On Front / Mesh On Back)
 - 160GSM

- FEATURES**
- Men's performance cut singlet with contrast side panels, with all breezeway mesh back. (available in kids cut)



CT1205 MENS EASY FIT	S	M	L	XL	2XL	3XL
FULL CHEST (CM)	103	108	113	118	123	128



MENS BSAKETBALL SHORTS

CK1225 MENS

- FABRIC**
- 100% Polyester Pro Air Fabric And Nylon Lining
 - 160GSM

- FEATURES**
- Men's basketball shorts with pro air fabric and nylon lining.
 - Contrast side panels and piping with side pockets.



CK1225 MENS EASY FIT	S	M	L	XL	2XL	3XL
WAIST (CM)	69	72	75	78	81	82



KIDS BSAKETBALL SINGLET

CT1206 KIDS

FABRIC

- 100% Polyester Breezeway Fabric (Pique Knit On Front / Mesh On Back)
- 160GSM

FEATURES

- Kids performance cut singlet with contrast side panels, with all breezeway mesh back. (available in men's cut)



CT1206 KIDS EASY FIT	06	08	10	12	14	16
FULL CHEST (CM)	53.5	56	58.5	61	63.5	66



UNISEX ALL SPORTS TEE SHIRT

CT1217 UNISEX

FABRIC

- 100% Breezeway Polyester Fabric
- 150GSM

FEATURES

- All sports round neck drop needle breezeway tee shirt with contrast panels on shoulders, and micromesh panels under arms. (available in kids cut)



CT1217 UNISEX EASY FIT	S	M	L	XL	2XL	3XL
FULL CHEST (CM)	105	110	115	120	125	130



KIDS BSAKETBALL SHORTS

CK1224 KIDS

FABRIC

- 100% Polyester Pro Air Fabric and Nylon Lining
- 160GSM

FEATURES

- Kids basketball shorts with pro air fabric and nylon lining.
- Contrast side panels and piping with side pockets.



CT1224 KIDS EASY FIT	06	08	10	12	14	16
WAIST (CM)	51	54	57	60	63	66



UNISEX PLAIN SPORTS SHORTS

CK706 UNISEX

FABRIC

- 100% Breezeway Polyester
- Quick dry and breathable for peak performance
- 150GSM

FEATURES

- Drop needle jersey knit fabric (available in kids cut + matching jersey CT0750)



CK706 UNISEX EASY FIT	S	M	L	XL	2XL	3XL
WAIST (CM)	66	70	74	78	82	86



ELITE SPORTS POLO

CP1450 ADULTS
CP1494 KIDS

FABRIC

- 100% breezeway polyester mini honey comb fabric, cool and comfortable light weight fabric
- 145gsm with anti bacterial coating

FEATURES

- Short sleeve contrast polo with knitted collar and reflective feature

CP1450 ADULTS	S	M	L	XL	2XL	3XL	5XL
GARMENT CHEST (CM)	105	110	115	120	125	130	140
CP1494 KIDS	06	08	10	12	14	16	
GARMENT CHEST (CM)	75	80	85	90	95	100	



TRACK SUIT JACKET WITH CONTRAST PANELS

CJ0533 ADULTS
CJ0534 KIDS

FABRIC

- 100% polyester
- 75% polyester 25% cotton lining
- 150gsm

FEATURES

- Peach skin microfibre jacket with constast panels
- Adjustable toggle at bottom hem

CJ0533 ADULTS	S	M	L	XL	2XL	3XL
FULL CHEST (CM)	119	124	129	134	139	144
CJ0534 KIDS	06	08	10	12	14	
FULL CHEST (CM)	84	90	96	102	108	





BASKETBALL SINGLET

TS83 ADULTS
TS83K KIDS

FABRIC

- 160gsm - CoolDry wicking mesh, 100% polyester

FEATURES

- Wicks moisture away from the body
- V-neck collar with centre patch that can be embroidered with logo
- Contrast colour on front and back of shoulder inserts and accent piping
- Double needle-hemmed arm holes and bottom

TS83 ADULT EASY FIT	S	M	L	XL	2XL	3XL
GARMENT 1/3 CHEST (CM)	53.5	56	58.5	61	63.5	66

TS83K KIDS EASY FIT	6K	8K	10K	12K	14K
GARMENT 1/3 CHEST (CM)	41	43.5	46	48.5	51



BLACK,RED NAVY,WHITE RED,NAVY ROYAL,WHITE



BASKETBALL SHORTS

SS23 ADULTS
SS23K KIDS

FABRIC

- 160gsm - CoolDry wicking mesh, 100% polyester

FEATURES

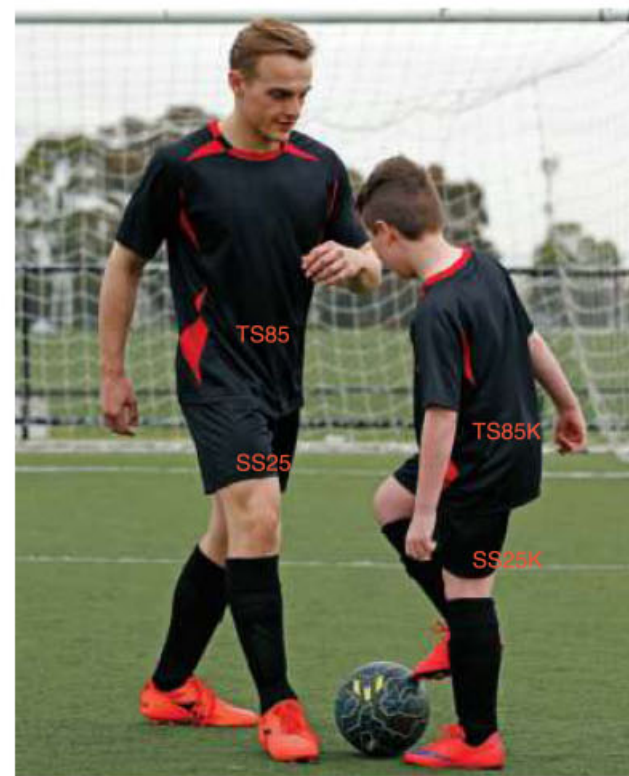
- Wicks moisture away from the body
- Full cut
- Covered elastic waistband with internal drawcord
- Contrast colour on front and back of shoulder inserts and accent piping
- Double needle-hemmed bottom

SS23 ADULT EASY FIT	S	M	L	XL	2XL	3XL
GARMENT 1/3 CHEST (CM)	64	68	72	76	80	84

SS23K KIDS EASY FIT	6K	8K	10K	12K	14K
GARMENT 1/3 CHEST (CM)	48	51	54	57	60



BLACK,RED NAVY,WHITE RED,NAVY ROYAL,WHITE



SHOOT SOCCER TEE

TS85 ADULTS
TS85K KIDS

FABRIC

- CoolDry® drop needle jersey 170gsm
- 100% polyester

FEATURES

- Wicks moisture away from the body
- Lap-over collar
- Contrast colour
- Raglan sleeves
- Double needle hemmed sleeves and bottom

TS85 ADULT EASY FIT	S	M	L	XL	2XL	3XL
GARMENT 1/3 CHEST (CM)	53.5	56	58.5	61	63.5	66

TS85K KIDS EASY FIT	6K	8K	10K	12K	14K
GARMENT 1/3 CHEST (CM)	41	43.5	46	48.5	51



BLACK,ORANGE BLACK,RED BOTTLE,GOLD NAVY,GOLD WHITE,NAVY

SHOOT SHORTS

SS25 ADULTS
SS25K KIDS

FABRIC

- CoolDry® drop needle jersey 170gsm
- 100% polyester

FEATURES

- Wicks moisture away from the body
- Covered elastic waistband with drawcord inside
- Double needle-hemmed bottom

SS25 ADULT EASY FIT	S	M	L	XL	2XL	3XL
GARMENT 1/3 CHEST (CM)	64	68	72	76	80	84

SS25K KIDS EASY FIT	6K	8K	10K	12K	14K
GARMENT 1/3 CHEST (CM)	48	51	54	57	60



BLACK BOTTLE ROYAL SKY,BLUE WHITE

CORPORATE WEAR



CAMDEN SHIRT

A contemporary cotton oxford weave shirt made with stretch for exceptional wearability

S016ML MENS LS
S016MS MENS SS

FABRIC

- 97% Cotton, 3% Elastane
- Easy Care Stretch Oxford Weave Fabric

FEATURES

- Modern button-down collar, twin back pleats and adjustable cuff
- No chest pocket, a loose pocket piece is included

S016ML, S016MS MENS CLASSIC FIT	XS	S	M	L	XL	2XL	3XL	4XL	5XL
GARMENT 1/2 CHEST (CM)	52	54.5	57	59.5	63.5	67.5	71.5	75.5	79.5
TO FIT NECK (CM)	36	38	40	42	44	46	48	50	52



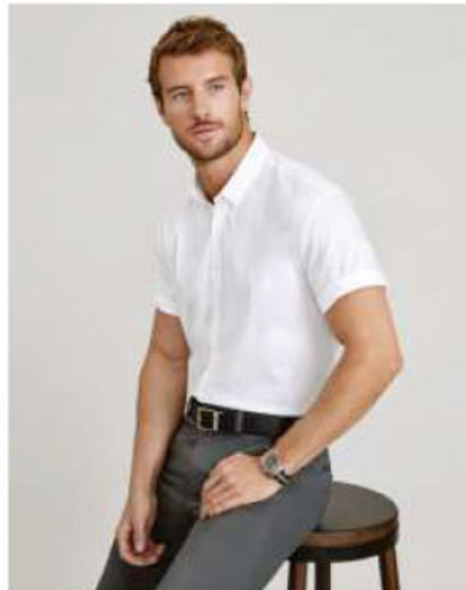
BLUE



WHITE



BLACK



CAMDEN SHIRT

Loose and easy-fitting, our new longline shirt is both contemporary and timeless



S016LL LADIES LS
S016LS LADIES SS

FABRIC

- 97% Cotton, 3% Elastane
- Easy Care Stretch Oxford Weave Fabric

FEATURES

- Contemporary easy fit silhouette, with scooped hem and extended tail
- Designed to be worn comfortably loose

S016LL, S016LS LADIES EASY FIT	6	8	10	12	14	16	18	20	22	24	26
GARMENT 1/2 CHEST (CM)	48	50.5	53	55.5	58	60.5	64	66.5	69	71.5	74



BLUE



WHITE



BLACK



BLACK



INK



WHITE

LILY HI-LO BLOUSE

Designed with a tucked, enveloped front this elegant pop-over blouse is a dream to wear

S014LL LADIES LS

FABRIC

- 97% Cotton, 3% Elastane
- Easy Care Stretch Oxford Weave Fabric

FEATURES

- Contemporary easy fit silhouette, with scooped hem and extended tail
- Designed to be worn comfortably loose

S014LL LADIES EASY FIT	6	8	10	12	14	16	18	20	22	24	26
GARMENT 1/2 CHEST (CM)	46	48.5	51	53.5	56	58.5	62	64.5	67	69.5	72



BLACK



INK



WHITE

LILY LADIES BLOUSE

Designed with a tucked, enveloped front this elegant pop-over blouse is a dream to wear

S013LS LADIES SS

S015LT LADIES LS

FABRIC

- Easy Care 100% Mechanical Stretch Polyester

FEATURES

- Soft petal-shaped lapel creates elegance at the neckline
- Loose-fitting silhouette with extended length
- Can be worn tucked in or out

S013LS LADIES EASY FIT	6	8	10	12	14	16	18	20	22	24
GARMENT 1/2 CHEST (CM)	48	50.5	53	55.5	58	60.5	64	66.5	69	71.5
S015LT LADIES EASY FIT	6	8	10	12	14	16	18	20	22	24
GARMENT 1/2 CHEST (CM)	46	48.5	51	53.5	56	58.5	62	64.5	67	69.5





MADISON SHORT SLEEVE

A functional short sleeve blouse that's designed to work

S628LS LADIES SS

FABRIC

- 100% Polyester Mechanical Stretch fabric
- Wrinkle Resistant, Low Maintenance Fabric with Flattering Drape

FEATURES

- Concealed button-through placket and notched sleeve detail
- Functional action back pleat for freedom of movement while you work
- Longer length can be worn tucked in or loosely out
- Gently shaped through the torso for an elegant appearance



BLACK MIDNIGHT BLUE IVORY



SILVER MIST

S628LS LADIES SEMI-FITTED	6	8	10	12	14	16	18	20	22	24	26
GARMENT 1/2 CHEST (CM)	45.5	48	50.5	53	55.5	58	60.5	63	65.5	68	70.5



MADISON SLEEVELESS

Soft shawl collar sleeveless style that's perfect on its own or layered under a jacket

S627LN LADIES

FABRIC

- 100% Polyester Mechanical Stretch fabric
- Wrinkle Resistant, Low Maintenance Fabric with Flattering Drape

FEATURES

- Concealed button-through placket and notched sleeve detail
- Functional action back pleat for freedom of movement while you work
- Longer length can be worn tucked in or loosely out
- Gently shaped through the torso for an elegant appearance



BLACK MIDNIGHT BLUE IVORY



SILVER MIST

S627LN LADIES SEMI-FITTED	6	8	10	12	14	16	18	20	22	24	26
GARMENT 1/2 CHEST (CM)	45.5	48	50.5	53	55.5	58	60.5	63	65.5	68	70.5



MIA TOP

Femininity at its most modern

K624LS LADIES



FABRIC

- 100% Polyester Mechanical Stretch fabric
- Wrinkle Resistant, Low Maintenance Fabric with Flattering Drape

FEATURES

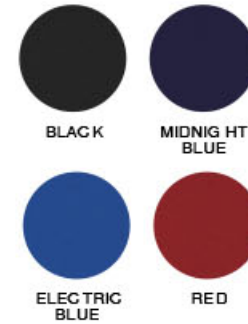
- Concealed button-through placket and notched sleeve detail
- Functional action back pleat for freedom of movement while you work
- Longer length can be worn tucked in or loosely out
- Gently shaped through the torso for an elegant appearance

K624LS LADIES SEMI-FITTED	6	8	10	12	14	16	18	20	22	24	26
GARMENT 1/2 CHEST (CM)	43	45.5	48	50.5	53	55.5	58	60.5	63	65.5	68

AVA TOP

A sophisticated classic

K625LS LADIES



FABRIC

- 95% Polyester, 5% Elastane Jersey Knit
- Soft Flowing Easy Care Fabric with a Luxurious Feel

FEATURES

- Gently draped neckline creates an elegant appearance
- Shaped through the torso for a flattering silhouette
- Can be worn tucked in or out

K625LS LADIES SEMI-FITTED	6	8	10	12	14	16	18	20	22	24	26
GARMENT 1/2 CHEST (CM)	43	45.5	48	50.5	53	55.5	59	61.5	64	66.5	69

REGENT SHIRT

We've redefined the classic 100% cotton business shirt. A neatly finished collar and streamlined seams gives a modern look to this easy-care uniform staple



S912ML MENS LS
S912LL LADIES LS
S912LT LADIES 3/4
S912MS MENS SS
S912LS LADIES SS

FABRIC

- Wrinkle Resistant 100% Premium Cotton
- Yarn Dyed Subtle Herringbone Weave Fabric

FEATURES

- Advanced performance fabric finish for better wrinkle resistance
- Mens features modern collar, chest pocket, twin back pleats and adjustable cuff
- Ladies features bust darts, waist shaping and neatly finished placket
- Can be worn tucked in or out

S912ML, S912MS MENS CLASSIC FIT	XS	S	M	L	XL	2XL	3XL	4XL	5XL	
GARMENT 1/2 CHEST (CM)	50.5	53	55.5	58	60.5	63	67	71	75	
TO FIT NECK (CM)	36	38	40	42	44	46	48	50	52	
S912LT, S912LL, S912LS LADIES SEMI-FITTED	6	8	10	12	14	16	18	20	22	24
GARMENT 1/2 CHEST (CM)	46	48.5	51	53.5	56	58.5	61	63.5	66	68.5



LUXE SHIRT

100% Cotton mini herringbone

S10210 MENS LS
S118LL LADIES LL
S10221 LADIES 3/4

FABRIC

- 100% Cotton Mini Herringbone Fabric
- Easy Iron Wrinkle Resistant Treated Fabric



MENS FEATURES

- Alternative cuff openings for cuff links
- Twin back shoulder pleats

LADIES FEATURES

- Cuff detail with buttons
- Waist and bust darts for shape

S10210 MENS CLASSIC FIT	S	M	L	XL	2XL	3XL	4XL	5XL		
GARMENT 1/2 CHEST (CM)	55	57	59	63	66	70	74	78		
TO FIT NECK (CM)	38	40	42	44	46	48	50	52		
S118LL, S10221 LADIES SEMI-FITTED	6	8	10	12	14	16	18	20	22	24
GARMENT 1/2 CHEST (CM)	46	48.5	51	53.5	56	58.5	61	63.5	66	68.5



BERLIN SHIRT

Cotton-rich stripe shirt



S121ML MENS LS
S121LL LADIES LS
S121LT LADIES 3/4
S121MS MENS SS
S121LS LADIES SS

FABRIC

- 61% Cotton, 35% Polyester, 4% Elastane Stretch Fabric
- Yarn Dyed Stripe
- Easy Iron Wrinkle Resistant Treated Fabric

MENS FEATURES

- Front and back side panels with curved hem for a tapered fit through torso, adjustable 2 way cuff and loose pocket included

LADIES FEATURES

- Designer style with tuxedo pleat detail on front and shoulder
- Concealed button placket
- Waist and bust darts for elegant shape

	S	M	L	XL	2XL	3XL	4XL	5XL	6XL
GARMENT 1/2 CHEST (CM)	53	55.5	58	61.5	64.5	68.5	72.5	76.5	80
TO FIT NECK (CM)	38	40	42	44	46	48	50	52	54
	6	8	10	12	14	16	18	20	22 24 26
GARMENT 1/2 CHEST (CM)	45.5	48	50.5	53	55.5	58	61.5	64	66.5 69 71.5



BLACK



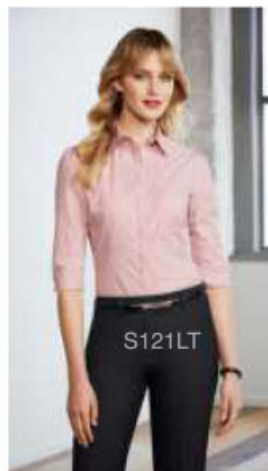
WHITE



BLUE



GRAPHITE



TEAL



WHITE



PLATINUM



CHERRY



BLACK



INK



ELECTRIC BLUE



CYAN

MONACO SHIRT

French style cotton stretch shirt

S770ML MENS LS
S770LL LADIES LS
S770MS MENS SS
S770LT LADIES 3/4
S770LS LADIES SS

FABRIC

- Cotton-rich 68% Cotton, 28% Polyester, 4% Elastane
- Yarn Dyed Fine Stripe
- Built in Stretch for Superior Comfort
- UPF Rating - Very Good

MENS FEATURES

- Modern collar, chest pocket, twin back pleats and adjustable cuff
- Curved hem – can be worn in or out

LADIES FEATURES

- French style Y-neckline and turn up cuff design
- Waist and bust darts for elegant fit
- Longer length with curved hem – can be worn in or out

S770ML, S770MS MENS CLASSIC FIT	XS	S	M	L	XL	2XL	3XL	4XL	5XL
GARMENT 1/2 CHEST (CM)	52.5	55	57.5	60	63	66	70	74	78
TO FIT NECK (CM)	36	38	40	42	44	46	48	50	52
S770LL, S770LT, S770LS LADIES SEMI-FITTED	6	8	10	12	14	16	18	20	22 24 26
GARMENT 1/2 CHEST (CM)	45.5	48	50.5	53	55.5	58	61.5	64	66.5 69 71.5





BIANCA JACKET

The perfect jacket to match our perfect pant

BS732L LADIES

FABRIC

- 4-Way Stretch
62% Polyester, 34% Viscose, 4% Elastane
- Machine Washable, Crease Resistant, Easy Care Fabric

FEATURES

- Fully lined with stretch lining for superior comfort
- Modern single button style, notched tuxedo lapel, tailored pockets
- Hidden internal lining zipper for embroidery access

BS732L LADIES SEMI-FITTED FIT	4	6	8	10	12	14
TO FIT BUST (CM)	76	80	85	90	95	100
TO FIT WAIST (CM)	58	62	67	72	77	82
BS732L LADIES SEMI-FITTED FIT	16	18	20	22	24	26
TO FIT BUST (CM)	105	111	117	122	127	132
TO FIT WAIST (CM)	87	94	99	104	109	114



**As shown on 174cm (5'8.5") height model*



REMY PANT

The perfect slim leg pant

BS909L LADIES

FABRIC

- 4-Way Stretch
62% Polyester, 34% Viscose, 4% Elastane
- Machine Washable, Crease Resistant, Easy Care Fabric

FEATURES

- Created due to popular demand for a slim leg silhouette
- Mid-rise, zip front with slimline waistband
- No front pockets or belt loops for a sleek and flattering appearance
- Added 5cm hem allowance for longer alteration
- Coordinates with our best-selling Perfect Pant Range

BS909L LADIES TAILORED FIT	4	6	8	10	12	14
TO FIT WAIST (CM)	58	62	67	72	77	82
TO FIT HIP (CM)	85	89	94	99	104	109
BS909L LADIES TAILORED FIT	16	18	20	22	24	26
TO FIT WAIST (CM)	87	94	99	104	109	114
TO FIT HIP (CM)	114	121	126	131	136	141



**As shown on 179cm (5'10.5") height model*





EVE

STELLA

KATE

PERFECT PANTS

Find your perfect fit. Meet Eve, Stella, and Kate.
A classic work pant available in three body fits.
Designed to fit and flatter your unique shape in all the right places!

BS508L EVE



EVE IS THE PERFECT PANT FOR YOU IF

- You often find pants gaping at the waist
- You need more room through the seat and thigh
- You want a flattering cut for your hourglass or pear shape

BS508L EVE	10	12	14	16	18
TO FIT WAIST (CM)	72	77	82	87	94
TO FIT HIP (CM)	101	106	111	116	123
	20	22	24	26	
TO FIT WAIST (CM)	99	104	109	114	
TO FIT HIP (CM)	128	133	138	143	

BS506L STELLA



STELLA IS THE PERFECT PANT FOR YOU IF

- You generally find most pants fit well in the hip and thigh
- You want your pant to fit neatly across the rear with some room through the leg
- Your waist to hip ratio is generally proportionate

BS506L STELLA	8	10	12	14
TO FIT WAIST (CM)	66	71	76	81
TO FIT HIP (CM)	94	99	104	109
	16	18	20	
TO FIT WAIST (CM)	86	83	98	
TO FIT HIP (CM)	114	121	126	

BS507L KATE



KATE IS THE PERFECT PANT FOR YOU IF

- You find pants fit at the waist but are too loose at the hip
- You have a slimmer thigh
- You have a petite or slender build

BS507L KATE	4	6	8	10
TO FIT WAIST (CM)	57.5	60	65	70
TO FIT HIP (CM)	85	87.5	92.5	97.5
	12	14	16	
TO FIT WAIST (CM)	75	80	85	
TO FIT HIP (CM)	102.5	107.5	112.5	

FABRIC

- 4-Way Stretch 62% Polyester, 34% Viscose, 4% Elastane

FEATURES

- Midrise with a flattering wider waistband
- Low profile front and back pockets
- Classic straight leg shape



NAVY

BLACK

*As shown on models Eve: 172cm (5'7.5") height model, Stella: 174cm (5'8.5") height model, Kate: 179cm (5'10.5") height model.

AUDREY DRESS

The perfect modern stretch shift dress

BS730L LADIES

FABRIC

- 4-Way Stretch
- 62% Polyester, 34% Viscose, 4% Elastane
- Machine Washable, Crease Resistant, Easy Care Fabric

FEATURES

- Fully lined with stretch lining for superior comfort
- Classic shift dress style with figure flattering angled seam detail
- Reinforced centre back zip and skirt vent
- Added 5cm hem allowance for longer alteration

BS730L LADIES SEMI-FITTED FIT	4	6	8	10	12	14
TO FIT BUST (CM)	76	80	85	90	95	100
TO FIT HIP (CM)	85	89	94	99	104	109
BS730L LADIES SEMI-FITTED FIT	16	18	20			
TO FIT BUST (CM)	105	111	117			
TO FIT HIP (CM)	114	121	126			



**As shown on 179cm (5'10.5") height model*

LOREN SKIRT

The perfect everyday stretch skirt

BS734L LADIES

FABRIC

- 4-Way Stretch
- 62% Polyester, 34% Viscose, 4% Elastane
- Machine Washable, Crease Resistant, Easy Care Fabric

FEATURES

- Fully lined with stretch lining for superior comfort
- Modern knee length style with belt loops
- Reinforced centre back zip and skirt vent
- Added 5cm hem allowance for longer alteration

BS734L LADIES REGULAR FIT	4	6	8	10	12	14
TO FIT WAIST (CM)	58	62	67	72	77	82
TO FIT HIP (CM)	85	89	94	99	104	109
BS734L LADIES REGULAR FIT	16	18	20	22	24	26
TO FIT WAIST (CM)	87	94	99	104	109	114
TO FIT HIP (CM)	114	121	126	131	136	141



**As shown on 179cm (5'10.5") height model*

CLASSIC JACKET

Machine washable business jacket

BS722M MENS

FABRIC

- 65% Polyester, 35% Viscose
- Machine Washable Fabric and Interlinings, Easy Care Fabric
- Mechanical Stretch for Added Comfort

FEATURES

- Contemporary 2-button tailored jacket with internal welt pocket
- Hidden internal lining zipper for embroidery access

BS722M MENS CLASSIC FIT	87	92	97	102	107	112
TO FIT CHEST (CM)	87	92	97	102	107	112
BS722M MENS CLASSIC FIT	117	122	127	132	137	142
TO FIT CHEST (CM)	117	122	127	132	137	142



NAVY

BLACK



*As shown on 185cm (6'1) height model

CLASSIC SLIM PANTS

Modern tapered slim leg pants

BS720M MENS

FABRIC

- 65% Polyester, 35% Viscose
- Easy Care Fabric
- Mechanical Stretch for Added Comfort

FEATURES

- Contemporary flat front with 2 side pockets, 1 back welt pocket
- Generous seams and 5cm hem allowance for longer length alteration
- Coordinates with Mens Classic range

BS720M MENS TAILORED FIT	72R	77R	82R	87R
TO FIT WAIST (CM)	72	77	82	87
BS720M MENS TAILORED FIT	92R	97R	102R	
TO FIT WAIST (CM)	92	97	102	



NAVY

BLACK



*As shown on 185cm (6'1) height model

CLASSIC PLEAT PANTS

Modern single pleat front pants

BS29110 MENS

FABRIC

- 65% Polyester, 35% Viscose
Easy Care Fabric
- Mechanical Stretch Fabric for Extra Comfort

FEATURES

- Modern style with single pleat
- Front side pockets and 2 back hip pockets
- Wider seams and 5cm hem allowance for easy alterations

BS29110 MENS REGULAR FIT	72R	77R	82R	87R	92R	97R
TO FIT WAIST (CM)	72	77	82	87	92	97
BS29110 MENS REGULAR FIT	102R	107R	112R	117R	122R	127R
TO FIT WAIST (CM)	102	107	112	117	122	127



**As shown on 185cm (6'1) height model*

CLASSIC FLAT PANTS

Flat front tailored pants

BS29210 MENS

FABRIC

- 65% Polyester, 35% Viscose
Easy Care Fabric
- Mechanical Stretch Fabric for Extra Comfort

FEATURES

- Modern style with plain flat front
- Front side pockets and 2 back hip pockets
longer length alteration
- Wider seams and 5cm hem allowance for easy alterations

BS29210 MENS REGULAR FIT	72R	77R	82R	87R	92R	97R
TO FIT WAIST (CM)	72	77	82	87	92	97
BS29210 MENS REGULAR FIT	102R	107R	112R	117R	122R	127R
TO FIT WAIST (CM)	102	107	112	117	122	127



**As shown on 185cm (6'1) height model*

ROMA KNIT

Lightweight and warm knitwear that's perfect for the everyday workplace

WP916M MENS
LC916L LADIES

FABRIC

- 50% Merino Wool, 50% Acrylic - 14 Gauge
- Machine Washable on Wool Setting

FEATURES

- Mens classic fit V-neck with relaxed ribbed cuff and hem that's not too tight or loose
- Ladies modern button-through style, hip length with softly ribbed cuff and hem

WP916M MENS MODERN FIT	XS	S	M	L	XL	2XL	3XL	5XL
GARMENT 1/4 CHEST (CM)	49.5	51.5	53.5	55.5	57.5	60.5	63.5	69.5
LC916L LADIES SEMI-FITTED	XS	S	M	L	XL	2XL	3XL	
GARMENT 1/4 CHEST (CM)	42.5	46	49.5	53	56.5	60	63.5	



MILANO KNIT

Contemporary wool blend knitwear

WP417M MENS
LP618L LADIES

FABRIC

- 50% Pre-Shrunk Wool, 50% Acrylic
12 Gauge
- Machine Washable on Wool Setting

FEATURES

- Mens contemporary V-neck style features ribbed side panel detail
- Ladies style features longer hip length with matching ribbed sleeve and hem detail, slim-line

WP417M MENS MODERN FIT	XS	S	M	L	XL	2XL	3XL	5XL
GARMENT 1/4 CHEST (CM)	50.5	52.2	54.5	56.5	58.5	61.5	65	72
LP618L LADIES SEMI-FITTED	X	S	M	L	XL	2XL	3XL	
GARMENT 1/4 CHEST (CM)	48	46	49	52	55	58	64	





MILANO CARDIGAN

Contemporary wool blend cardigan

LC417L LADIES

FABRIC

- 50% Pre-Shrunk Wool, 50% Acrylic - 12 Gauge
- Machine Washable on Wool Setting

FEATURES

- Longer hip length with unique ribbed sleeve and hem detail, slim-line button through placket



CHARCOAL BLACK NAVY

LC417L LADIES SEMI-FITTED	XS	S	M	L	XL	2XL	3XL
GARMENT 1/2 CHEST (CM)	43	46	49	52	55	58	64



MILANO VEST

Contemporary wool blend vest

WV619M MENS
LV619L LADIES

FABRIC

- 50% Pre-Shrunk Wool, 50% Acrylic - 12 Gauge
- Machine Washable on Wool Setting

FEATURES

- Contemporary V-neck style
- Mens style features ribbed side panel detail



CHARCOAL BLACK NAVY

WV619M MENS MODERN FIT	XS	S	M	L	XL	2XL	3XL	5XL
GARMENT 1/2 CHEST (CM)	50.5	52.5	54.5	56.5	58.5	61.5	65	72
LV619L LADIES SEMI-FITTED	XS	S	M	L	XL	2XL	3XL	
GARMENT 1/2 CHEST (CM)	43	46	49	52	55	58	64	

FOOD & HOSPITALITY

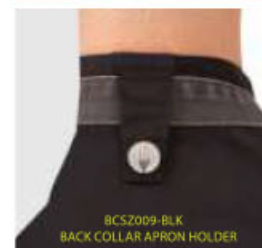
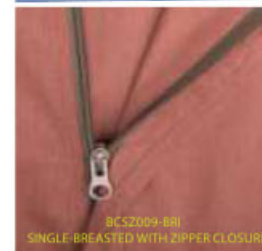


SPRINGFIELD



- BLK (black)
- WHT (white)
- BRI (brick)
- GRY (grey)
- INB (ink blue)
- SKY (sky blue)
- PLR (purple)

SPRINGFIELD CHEF JACKET | BCSZ009-BRI | DORSET CHEF'S BIB APRON | ABCAQ004-RUS



BCSZ009 MENS

FABRIC

- 160gsm - 65% Polyester, 35% Cotton Blend

FEATURES

- Cool Vent side panels
- Side-seam slits
- Single-breasted with zipper closure
- Back-collar apron holder with engraved snap tab
- Left sleeve thermometer pocket
- Right sleeve utility pocket

CARE

- Only Non-Chlorine Bleach When Needed
- Tumble Dry Low
- Warm Iron as Needed
- Machine Wash Warm With Like Colours, No Hotter Than 104F (40C)

BCSZ009 MENS MODERN FIT	XS	S	M	L	XL	2XL	3XL
CHEST (CM)	81	91	102	112	122	132	142

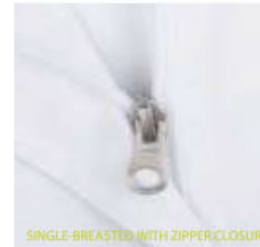
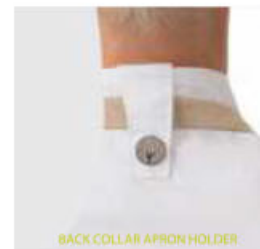
ESSENTIAL

SPRINGFIELD



- BLK (black)
- WHT (white)
- PUR (purple)
- GRY (grey)

Chef Carla Hall
Carla Hall's Southern Kitchen & Co-Host of The Chew, New York, NY



BCWSZ006 LADIES

FABRIC
• 160gsm - 65% Polyester, 35% Cotton Blend

- FEATURES**
- Cool Vent side panels
 - Side-seam slits
 - Single-breasted with zipper closure
 - Back-collar apron holder with engraved snap tab
 - Left sleeve thermometer pocket
 - Right sleeve utility pocket

- CARE**
- Only Non-Chlorine Bleach When Needed
 - Tumble Dry Low
 - Warm Iron as Needed
 - Machine Wash Warm With Like Colours, No Hotter Than 104F (40C)

BCWSZ006 LADIES SLIM FIT	XS	S	M	L	XL	2XL
CHEST (CM)	76	86	97	107	117	127

EXECUTIVE CHEFS LIGHTWEIGHT JACKET

CJ048 MENS L/S
CJL20 LADIES L/S
CJ049 MENS S/S
CJL22 LADIES S/S

FABRIC
 • 65% Polyester, 35% Cotton 155 gsm

- FEATURES**
- Fold back cuff
 - Left chest welt pocket
 - Pen pocket on sleeve
 - Matching stud buttons on tape



CJ048 CJ049 MENS CLASSIC FIT	2XS	XS	S	M	L	XL	2XL	3XL	4XL	5XL	6XL
TO FIT CHEST (CM)	52-57	62-67	72-77	82-87	92-97	102-107	112-117	122-127	132-137	142-147	152-157
CJL20 CJL22 LADIES CLASSIC FIT	6	8	10	12	14	16	18	20	22	24	
TO FIT BUST (CM)	80	85	90	95	100	105	110	115	120	125	



BLACK L/S



WHITE L/S



BLACK S/S



WHITE S/S

FOOD INDUSTRY UNISEX ELASTIC DRAWSTRING PANTS

WP3004 UNISEX

FABRIC
 • 65% Polyester, 35% Cotton 220 gsm

- FEATURES**
- Elastic waist with drawstring
 - Jet side pockets
 - Back patch pocket
 - Reinforced stress points



WP3004 UNISEX CLASSIC FIT	2XS	XS	S	M	L	XL	2XL	3XL	4XL
TO FIT WAIST (CM)	52-57	62-67	72-77	82-87	92-97	102-107	112-117	122-127	132-137

UNISEX CHEFS DRAWSTRING CARGO

CP055 UNISEX

FABRIC
 • 65% Polyester, 35% Cotton 220 gsm

- FEATURES**
- Elastic waist with drawstring pocket
 - Back pocket
 - Left leg pocket
 - Jet side pockets
 - Reinforced stress points



WHITE



BLACK

CP055 UNISEX CLASSIC FIT	2XS	XS	S	M	L	XL	2XL	3XL	4XL
TO FIT WAIST (CM)	52-57	62-67	72-77	82-87	92-97	102-107	112-117	122-127	132-137

EXECUTIVE CHEFS LIGHTWEIGHT VENTED JACKET WITH CHECKED DETAILS

CJ044 MENS L/S
CJ042 MENS S/S

FABRIC
• 65% Polyester, 35% Cotton 155 gsm

- FEATURES**
- Left chest welt pocket
 - Pen pocket on sleeve
 - Fold back cuff with check fabric detail
 - Vertical back vents with check fabric detail
 - Contrast stud buttons on tape



CJ044 MENS CLASSIC FIT	2XS	XS	S	M	L	XL	2XL	3XL	4XL	5XL	6XL
TO FIT NECK (CM)	52-57	62-67	72-77	82-87	92-97	102-107	112-117	122-127	132-137	142-147	152-157
CJ042 LADIES CLASSIC FIT	6	8	10	12	14	16	18	20	22	24	
TO FIT BUST (CM)	80	85	90	95	100	105	110	115	120	125	



WHITE L/S

BLACK L/S

WHITE S/S

BLACK S/S

UNISEX CHEFS CHECK DRAWSTRING PANTS

CP050 UNISEX

FABRIC
• 65% Polyester, 35% Cotton 195 gsm

- FEATURES**
- Elastic waist with drawstring
 - Jet side pockets
 - Reinforced stress points



CP050 UNISEX CLASSIC FIT	2XS	XS	S	M	L	XL	2XL	3XL	4XL
TO FIT WAIST (CM)	52-57	62-67	72-77	82-87	92-97	102-107	112-117	122-127	132-137

UNISEX CHEFS CHECK DRAWSTRING CARGO

CP060 UNISEX

FABRIC
• 65% Polyester, 35% Cotton 195 gsm

- FEATURES**
- Elastic waist with drawstring
 - Utility pocket with contrast gusset
 - Back pocket
 - Left leg pocket with contrast gusset
 - Jet side pockets
 - Reinforced stress points



UNISEX CLASSIC #CP060	2XS	XS	S	M	L	XL	2XL	3XL	4XL
TO FIT WAIST (CM)	52-57	62-67	72-77	82-87	92-97	102-107	112-117	122-127	132-137



BRUNSWICK COTTON CANVAS BIB APRON

AP07(M3200) UNISEX

FABRIC

- 260gsm - 100% cotton canvas

FEATURES

- Waist pockets
- Reinforced designer rivets
- Brass metal buttons

SIZE

- 72cm(W) x 84cm(H)

Please note: Straps AP08 (M3001) are sold separately



BLACK

CHARCOAL

KHAKI

CHANGEABLE APRON STRAPS



AP08 (M3001)

FABRIC

- 100% polyester, herringbone

FEATURES

- Comes in pair
- Stitched eyelets.

SIZE

- Strap length 140cm

Suitable for AP06 (M3100), AP07 (M3200), AP08 (M3001), AP09 & AP10



BLACK

CHARCOAL

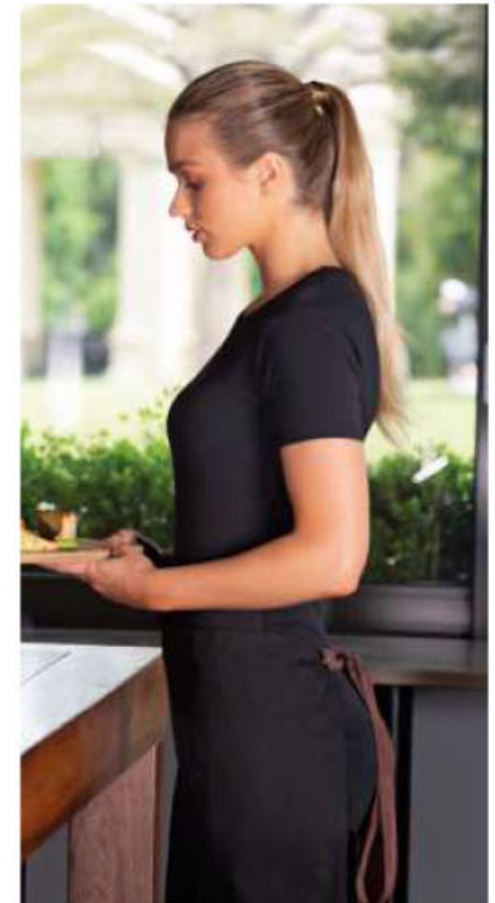
CHOCOLATE

CYAN

KHAKI

NAVY

RED



FITZROY COTTON CANVAS HALF WAIST APRON

AP06(M3100) UNISEX

FABRIC

- 260gsm - 100% cotton canvas

FEATURES

- Waist pockets
- Reinforced designer rivets
- Brass metal buttons and rings rivets

SIZE

- 72cm(W) x 84cm(H)



BLACK

CHARCOAL

KHAKI

Please note: Straps AP08 (M3001) are sold separately

EAST VILLAGE DENIM APRON

AP09 BIB APRON UNISEX
AP10 HALF APRON UNISEX

FABRIC
• 240gsm - 100% Cotton

FEATURES
• Apron includes 4 front pockets
• Large top front area for decoration



BLACK



INDIGO BLUE



LIGHT BLUE



APRON STRAPS

AP08
FABRIC
• 100% POLYESTER, HERRINGBONE

FEATURES
• Comes in pair
• Stitched eyelets



BLACK



CHARCOAL



CHOCOLATE



CYAN



KHAKI



NAVY



RED

AP11
FABRIC
• 100% POLYESTER, HERRINGBONE

FEATURES
• Comes in pair



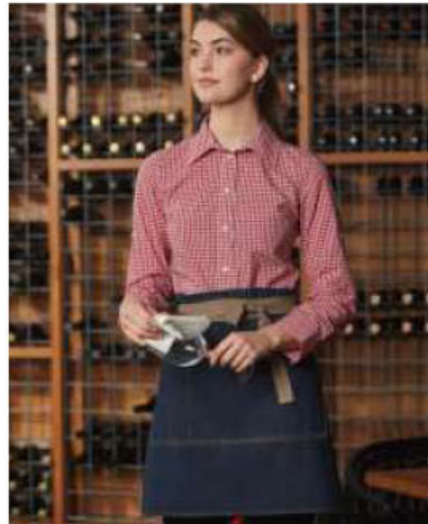
BLACK WHITE



NAVY WHITE



RED WHITE



CROSS-BACK BIB APRON

Available in black or white pinstripe

F35 UNISEX

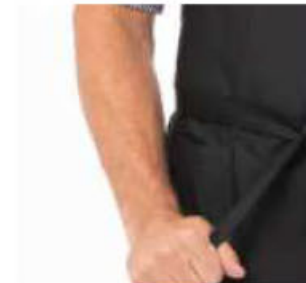
FABRIC
• 65% Polyester, 35% Cotton Yarn-Dyed Blend
• 210 g

FEATURES
• Adjustable cross-back ties
• Ties are extra wide
• Two patch pockets
• Pocket holds tablet device
• Reinforced stress points

SIZE
• 90cm(L) x 79cm(W)



BLACK/WHITE



BLACK



SLATE



BIB APRON

Our coloured Bib Aprons are a great way to hallmark your business.

F8 UNISEX

FABRIC

- 65% Polyester, 35% Cotton Blend
- 210 GSM

FEATURES

- Available in black, Grey, hunter green, lime, merlot, navy blue, orange/white/brown, red, royal blue, white, black w/chalk stripe, berry/Grey/black, maroon
- Adjustable neck buckle
- Patch pocket
- Pocket has center divide
- Reinforced stress points
- Pre-tested for strength and durability

SIZE

- 86cm(L) x 61cm(W)

DESCRIPTION

- The classics are classics for a reason.
- They never go out of style.
- The Butcher Apron is always going to be one of the most functional garments in the industry.
- We just made it better with efficient details and lots of colour options.



MEMPHIS BIB APRON

AB035 UNISEX

FABRIC

- 100% Cotton
- 280 g

FEATURES

- Available in black and indigo blue
- Contrast tape ties
- Adjustable metal neck buckle
- Contrast topstitching
- Criss-cross bar tacks
- Two chest pockets
- Two front pockets

DISCRIPTION

- Fire pits have met their match with the fashion-forward Memphis Bib Apron.
- It has all of the features you need to be at your best when you're working the grill, smoking meats or prepping the kitchen for a busy shift.

SIZE

- 76cm(w) x 86cm(h)



HEALTH | MEDICAL | CARE



CLASSIC SCRUBS

Unisex BIZ SCRUBS™ top & cargo pants

H10612 UNISEX TOP
H10610 UNISEX PANTS

FABRIC

- 65% Polyester, 35% Cotton
- High Performance Soft Touch Fabric
- Natural Stretch Fabric for Added Comfort
- Laundry Friendly - can be laundered to hygienic 80°C
- 155 GSM

TOP FEATURES

- 2 Lower front pockets with functional concealed inner pockets
- Left chest pocket

PANT FEATURES

- 2 Front slant pockets and 2 cargo pockets with functional inner right pocket
- Elasticated waist and drawstring
- Left chest pocket

BIZ SCRUBS™
SPECIFICALLY DESIGNED TO GIVE YOU THE LOOK, THE FEATURES AND THE PERFORMANCE HEALTH PROFESSIONALS NEED.



H10612 UNISEX EASY FIT	XS	S	M	L	XL	2XL	3XL	5XL
GARMENT HALF CHEST (CM)	53	56	59	62	66	69	73	81
H10610 UNISEX EASY FIT	XS	S	M	L	XL	2XL	3XL	5XL
GARMENT HALF WAIST STRETCHED (CM)	46	50	54	58.5	62.5	66.5	70.5	78.5
GARMENT HALF WAIST RELAXED (CM)	29	33	37	40.5	42.5	45.5	48.5	57.5

CLASSIC SCRUBS

Ladies BIZ SCRUBS™ top & bootleg pants

H10622 LADIES TOP
H10620 LADIES PANTS

FABRIC

- 65% Polyester, 35% Cotton
- High Performance Soft Touch Fabric
- Natural Stretch Fabric for Added Comfort
- Laundry Friendly - can be laundered to hygienic 80°C
- 155 GSM

TOP FEATURES

- 2 Lower front pockets with functional concealed inner pockets

PANT FEATURES

- Modern bootleg style with stitch detail around pockets
- 2 Front welt pockets with functional inner right pocket
- Flat front with elasticated rear waistband



H10622 LADIES EASY FIT	XS	S	M	L	XL	2XL	3XL	
GARMENT HALF CHEST (CM)	48	51	54	57	61	65	70	
H10620 LADIES EASY FIT	XXS	XS	S	M	L	XL	2XL	3XL
GARMENT HALF WAIST STRETCHED (CM)	46.5	49.5	52.5	55.5	59	62.5	67	71.5
GARMENT HALF WAIST RELAXED (CM)	36.5	38.5	41.5	44.5	47.5	51	55.5	60



UNISEX SCRUB TOP & PANTS

M7630 UNISEX TOP
M9370 UNISEX PANTS

FABRIC

- 65% Polyester, 35% Cotton

TOP FEATURES

- V-neck
- Left chest and two lower front pockets, with internal organiser pockets

PANT FEATURES

- Front side pockets, one back pocket and two cargo pockets
- Cord draw string

M7630 UNISEX EASY FIT	XS	S	M	L	XL	2XL	3XL	4XL	5XL
LADIES REF	8-10	12	14	16	18	20	22	24	26
GARMENT HALF CHEST (CM)	107	112	117	122	127	132	137	142	147
M9370 UNISEX EASY FIT	XS	S	M	L	XL	2XL	3XL	4XL	5XL
LADIES REF	8-10	12	14	16	18	20	22	24	26
HIP (CM)	115	120	125	130	135	140	145	150	155
OUTER LENGTH (CM)	100	102	104	106	108	110	111	112	113





CONTRAST TRIM SCRUB TOPS

M7650 MENS
M7660 LADIES

*PLEASE NOTE:
these garments are packaged with
awareness of sustainable packaging*

FABRIC

- 160gsm - 65% Polyester / 33% Cotton / 2% Elastane

FEATURES

- Designed in Australia
- ID Loop
- Multi-Functional Pocketing
- Side Splits
- Front pocket stitching matches v-neck contrast creating the opportunity to support role differentiation where required.
- 2 Way Stretch
- Permanent anti-microbial protection
- TrueDry® Cool Effect
- Long life garment freshness
- Easy Care
- Industrial Laundry Compliant



N7650 MENS MODERN FIT	XS	S	M	L	XL	2XL	3XL	4XL	5XL	
GARMENT HALF CHEST (CM)	53.5	56	58.5	61	64	67	70	73	76	
M7660 LADIES MODERN FIT	2XS	XS	S	M	L	XL	2XL	3XL	4XL	5XL
LADIES REF	6	8	10	12	14	16/18	18/20	22/24	24/26	28/30
GARMENT HALF CHEST (CM)	46	48.5	51	53.5	56	60	64	68	72	76



BLACK/BLACK
(M7650 ONLY)

NAVY/CHARCOAL

NAVY/ROYAL

NAVY/NAVY
(M7650 ONLY)

NAVY/TEAL



CONTRAST SCRUBS TOP

Unisex BIZ SCRUBS™ crossover top

H10722 LADIES

FABRIC

- 65% Polyester, 35% Cotton
- High Performance Soft Touch Fabric
- Natural Stretch Fabric for Added Comfort
- Laundry Friendly - can be laundered to hygienic 80°C
- 155 GSM

FEATURES

- Stylish crossover feature with contrast trim
- 2 Front welt pockets with contrast stitching detail
- Side splits



H10722 LADIES MODERN FIT	XS	S	M	L	XL	2XL	3XL	4XL
GARMENT HALF CHEST (CM)	48	51	54	57	61	65	70	75



LAB COAT

Classic unisex style

H132ML UNISEX

FABRIC

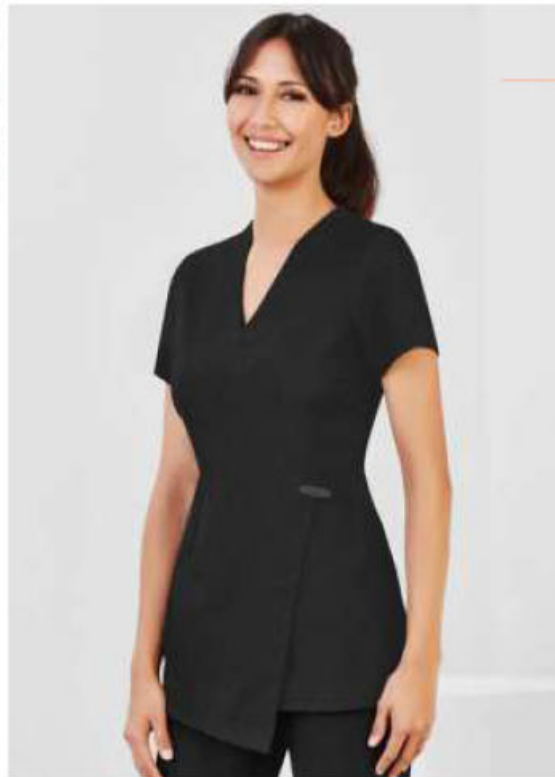
- 65% Polyester, 35% Cotton Twill
- Natural Stretch Fabric for Added Comfort
- Easy Care - Machine Wash 'n' Wear
- 155 GSM

FEATURES

- Longer 3/4 length with notched collar and back hem vent
- Chest pocket with pen line and 2 front pockets at hip



H132ML UNISEX MODERN FIT	XS	S	M	L	XL	2XL	3XL	5XL
GARMENT HALF CHEST (CM)	54	57	59	61	63	66	70	78



SPA TUNIC

Womens Spa Tunic

H630L LADIES

FABRIC

- 97% Polyester, 3% Elastane
- Premium stretch fabric with linen-like appearance
- Easy care, Dupont™ Teflon® stain release function

FEATURES

- Designer style, asymmetrical mock-wrap front
- Invisible centre back zip, deep side splits

H632L LADIES SEMI-FITTED	6	8	10	12	14	16	18	20
GARMENT HALF CHEST (CM)	43	46	49	52	55	58	61	64



BLACK



LADIES EDEN TUNIC

H133LS LADIES

FABRIC

- 97% Polyester, 3% Elastane
- New Teflon® stain release stretch fabric
- 230 GSM

FEATURES

- Semi-fitted concealed button through front with 2 lower front pockets
- Collarless with "V" shaped neck detail
- Centre back action-back pleat
- Longer line with deep side splits

H133LS LADIES SEMI-FITTED	6	8	10	12	14	16	18	20
GARMENT HALF CHEST (CM)	44	47	50	53	56	59	62	65

EFFORTLESSLY EASY STRETCH TOPS

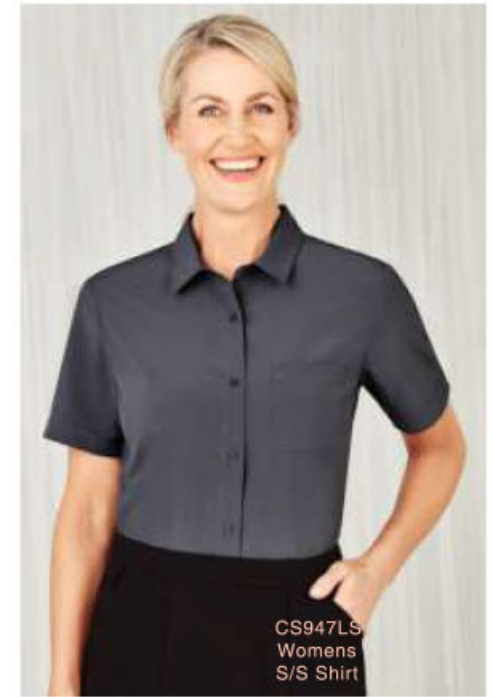
We've redefined healthcare dressing with these easy care, non-iron shirts in a soft fabric



CS949LS
Womens
Tunic



CS951LT
Womens
3/4 Shirt



CS947LS
Womens
S/S Shirt

NAVY

CS949LS LADIES TUNIC
CS9951LT LADIES 3/4
CS947LS LADIES S/S

ELECTRIC
BLUE

FABRIC
• 94% Polyester / 6% Elastane

TEAL

FEATURES
• A perfect blend of style, comfort and function
• The easy-care fabric is breathable, soft and lightweight; perfect for all climates
• Styles feature longer hem lengths, hidden bust button (short sleeve and ¾ sleeve styles), side splits and pockets

CHERRY

CHARCOAL

BLACK

PURPLE

MID BLUE



LADIES SIZE	4	6	8	10	12	14	16	18	20
BUST (CM)	76.5	79	84	89	94	99	104	111	115
LADIES SIZE	22	24	26	28	30				
BUST (CM)	121	126	131	136	141				

EASY STRETCH DAISY PRINT TOPS



CS948LS
LADIES
Daisy Print



CS950LS
LADIES
Daisy Print

- PURPLE
- NAVY
- ELECTRIC BLUE
- TEAL



CS948LS LADIES
CS950LS LADIES

FABRIC

- 94% Polyester / 6% Elastane

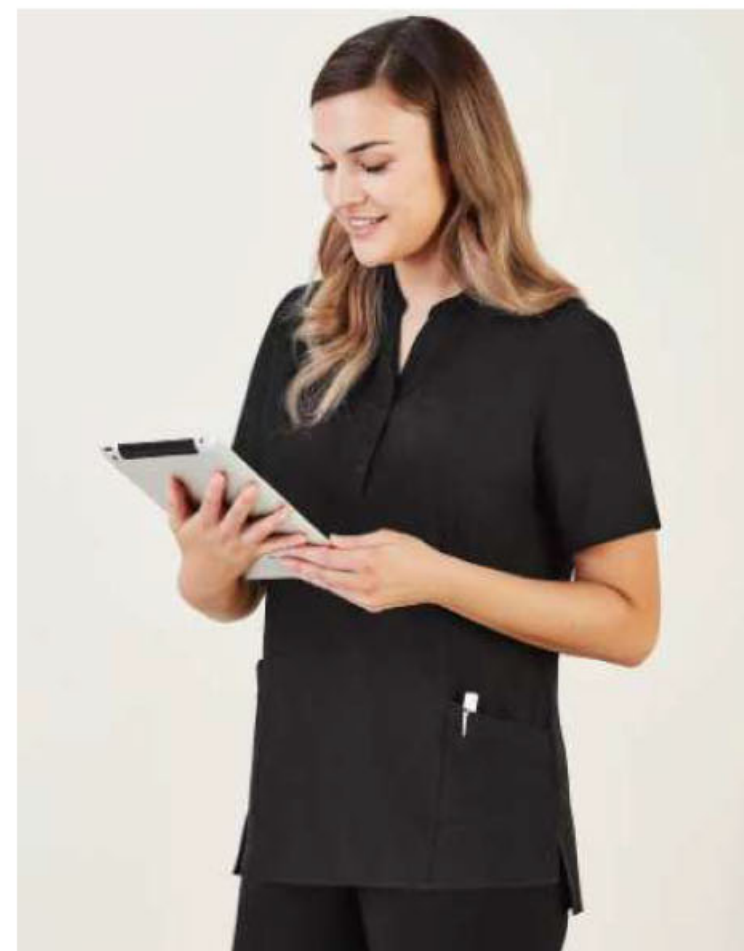
FEATURES

- A perfect blend of style, comfort and function
- The easy-care fabric is breathable, soft and lightweight; perfect for all climates
- Styles feature longer hem lengths, hidden bust button on short sleeve style, side splits and pockets

CARE

- Gentle chine wash
- Wash inside out with similar colours
- Do not bleach, soak or tumble dry
- Line dry in shade

LADIES SIZE	4	6	8	10	12	14	16	18	20
BUST (CM)	76.5	79	84	89	94	99	104	111	116
LADIES SIZE	22	24	26	28	30				
BUST (CM)	121	126	131	136	141				



- NAVY
- ELECTRIC BLUE
- TEAL
- CHERRY
- CHARCOAL
- BLACK
- PURPLE
- MID BLUE

FLORENCE WOMENS TUNIC

CS949LS LADIES

FABRIC

- 94% Polyester / 6% Elastane

FEATURES

- A perfect blend of style, comfort and function.
- The easy-care fabric is breathable, soft and lightweight; perfect for all climates
- Styles feature longer hem lengths, hidden bust button (short sleeve and 3/4 sleeve style), side splits and pockets

LADIES SIZE	4	6	8	10	12	14	16	18	20	22	24	26	28	30
GARMENT HALF CHEST (CM)	46	48.5	51	53.5	56	58.5	61	66.5	69	71.5	74	76.5	79	81.5

WOMENS COMFORT WAIST LOWERS



CL954LL Womens Comfort Waist Cargo Pant



CL956LS Womens Comfort Waist Cargo Skirt



CL957LS Womens Comfort Waist Cargo Short



CL955LL Womens Comfort Waist Straight Leg Pant



CL953LL Womens Comfort Waist Slim Leg Pant



FABRIC

- 64% Polyester / 34% Viscose / 2% Elastane

FEATURES

- You'll be impressed with the hard wearing, durable, and easy-care fabric
- Made from a lightweight twill fabric, it's breathable and comfortable making it perfect for all climates and health care roles.

CARE

- Warm gentle machine wash 40°C
- Wash inside out with similar colours
- Do not bleach, soak or tumble dry
- Line dry in shade.
- Cool iron if required



CL953LL Womens Slim Leg Pant 4 - 20



CL955LL Womens Straight Leg Pant 8 - 30



CL954LL Womens Cargo Pant 4 - 30



CL956LS Womens Cargo Skirt 4 - 30



CL957LS Womens Cargo Short 4 - 20

LADIES SIZE	4	6	8	10	12	14	16	18	20
WAIST (CM)	59.5	62	67	72	77	82	87	94	99
HIP (CM)	85.5	89	94	99	104	109	114	121	126
LADIES SIZE	22	24	26	28	30				
WAIST (CM)	104	109	114	119	124				
HIP (CM)	131	136	141	146	151				

ACCESSORIES



SURF CAP

1114

FABRIC

- 100% recycled nylon

FEATURES

- Mid profile, snapback cap
- Light weight
- 100% recycled nylon



COPPER



PETROL BLUE



NAVY



DARK GREY



BLACK

TRUCKER CAP

1108 UNISEX

FABRIC

- 100% cotton

FEATURES

- Mid profile snapback cap
- Plastic snapback, tonal under peak lining, mesh back
- Mid weight
- Flat Peak
- 100% cotton front and peak, 100% polyester mesh back
- One size fits all



BLACK



NAVY

DAVIE SIX PANEL CAP

1111 UNISEX

FABRIC

- 100% cotton

FEATURES

- Low profile six panel cap, curved peak
- Adjustable fastener with metal clasp, tonal under-peak lining
- Light weight
- One size fits all



NATURAL



PINK



COFFEE



PALE BLUE



HARBOUR BLUE



NAVY

BILLY CAP

1109 UNISEX

FABRIC

- 100% cotton

FEATURES

- Lower profile snapback
- Eyelets, tonal under-peak lining, seam free front panel
- Mid weight, flat peak
- One size fits all



KHAKI



ARMY



NAVY



DARK GREY



BLACK

HEAVY BRUSHED COTTON CAP

CH01 UNISEX

FABRIC

- 100% heavy brushed cotton

FEATURES

- 6-panel structured, laid-back front
- Pre-curved peak
- Short crossover velcro



BRUSHED COTTON WITH MESH

4002 UNISEX

FABRIC

- 100% Brushed Regular Cotton
- 100% LF Polyester Mesh

BACK FASTENER

- Double Plastic Adjustable Strap

FEATURES

- Structured 6 Panel
- Pre-Curved Peak
- Contrast Peak Stitching
- Regular Brushed Cotton
- Peak Under Material
- 4 Stitch Polo Sweatband
- Poplin Lined Internal Seams



SANDWICH PEAK CAP

CH18 UNISEX



FABRIC

- 100% heavy brushed cotton

FEATURES

- 6-panel structured, laid-back front
- Pre-curved peak with contrasting sandwich
- 4 metal eyelets on 4 panels & tuck in fabric strap with gun metal buckle

BREATHABLE POLY TWILL CAP

4011 UNISEX

FABRIC

- 100% Breathable Polyester Twill

BACK FASTENER

- Fabric Covered
- Short Touch Strap

FEATURES

- Structured 5 Panel
- Pre-Curved Peak
- Embroidered Eyelets
- Matching Peak Under Material
- Non-Woven 2 Stitch Sweatband
- Non-Woven Internal Seams



SOFT WASHED BUCKET HAT



CH29 UNISEX

FABRIC

- 100% Heavy Brushed Cotton

FEATURES

- Small metal eyelets on sides.

SIZE

- S/M & L/XL



H1027 Chin Strap with break-away clip can be attached at extra cost.

SLOUCH HAT WITH BREAKAWAY CLIP STRAP



H1026 UNISEX

FABRIC

- 65% Polyester, 35% Cotton.

FEATURES

- PF rating 50+ "Excellent Protection"
- Poly/Cotton fabric with hard brim
- Self color metal eyelet for ventilation
- Toggle and break-away clip on chin strap

SIZE

- 55cm (S), 57cm(M), 59cm(L), 61cm(XL)



H1027 Chin Strap with break-away clip can be attached at extra cost.



SOFT WASHED CONTRAST SANDWICH



CH31 UNISEX

FABRIC

- 100% Heavy Brushed Cotton

FEATURES

- Small metal eyelets on sides.

SIZE

- S/M & L/XL



H1027 Chin Strap with break-away clip can be attached at extra cost.

SURF HAT WITH BREAKAWAY STRAP



H1035 UNISEX

FABRIC

- 65% Polyester, 35% Cotton.

FEATURES

- PF rating 50+
- Meets AS/NZS 4399:1999
- Poly/Cotton fabric with soft brim
- Large metal eyelets for ventilation
- Toggle and break-away clip on chin strap

SIZE

- 55cm (S), 57cm(M), 59cm(L), 61cm(XL)



H1027 Chin Strap with break-away strap



BUCKET HAT

1117

FABRIC

- 100% cotton

FEATURES

- Bucket hat
- Reinforced brim with stitching detail, side eyelets
- Light-Mid weight
- One size fits all



CUFF BEANIE

1107 UNISEX

FABRIC

- 100% acrylic

FEATURES

- Tight knit
- Relaxed style, cuffed hem, longer body
- Mid weight
- One size fits all



BUCKET HAT

1176

FABRIC

- 100% cotton, 8-Wale Partridge Cord

FEATURES

- Bucket hat
- Reinforced brim with stitching detail.
- Mid weight
- One size fits all



Acrylic Beanie - Toque

4243 UNISEX

FABRIC

- Acrylic Yarn

FEATURES

- 70gm weight
- 21.5cm H x 20cm W
- 8cm Roll-Up



PARCEL TOTE

1000

FEATURES

- Tote
- Squared off hem
- Reinforced shoulder straps, one large main compartment
- Heavy weight, 320 GSM
- 100% cotton canvas
- One size 35.5cm x 39cm



SHOULDER TOTE

1002

FEATURES

- Tote
- Reinforced shoulder straps, one large main compartment
- Heavy weight, 320 GSM
- 100% cotton canvas
- One size 46cm x 37cm



CARRIE TOTE

1001

FEATURES

- Tote
- Reinforced shoulder straps, one large main compartment
- Heavy weight, 320 GSM
- 100% cotton canvas
- One size 42cm x 42cm



DENIM CARRIE TOTE

1012

FEATURES

- Tote
- Reinforced shoulder straps, one large main compartment
- Folded bottom
- Mid weight, 350 GSM
- 100% cotton
- One size 42cm x 42cm



WAIST BAG

1014

FEATURES

- Mid weight, 225 GSM
- 100% polyester with PU coating
- One large main compartment, one external zipped pocket
- Adjustable waist strap, YKK zips
- One size 23.5cm x 15cm x 8cm
- 2.5 litre capacity



BLACK

RECYCLED RUCKSACK

1028

FABRIC

- 100% recycled polyester
- Heavy weight 360 GSM

FEATURES

- Large main compartment, drawcord to close, double adjusters, side handle, internal metal mesh window, with key chain attachment, internal laptop sleeve, external ykk zip pocket
- One size L 52cm x W 28cm x H 17cm, 25 litre capacity



BLACK

FLIGHT BAG

1016

FEATURES

- Mid weight, 225 GSM
- 100% polyester with PU coating
- One large main compartment, one external zipped pocket, one internal pocket
- Adjustable shoulder strap, YKK zips
- One size 20cm x 16cm x 6cm
- 2 litre capacity



BLACK

RECYCLED RUCKSACK

1028

FABRIC

- 100% recycled polyester
- Heavy weight 360 GSM

FEATURES

- Large main compartment, drawcord with single adjuster at top, flap to close with double buckle, internal metal mesh window, with key chain attachment, internal laptop sleeve, external ykk zip pocket
- One size L 52cm x W 28cm x H 17cm, 25 litre capacity



BLACK

EXECUTIVE HEATHER BACKPACK



BACK VIEW



MEDIA ACCESS



STRIP ZIPPERED POCKET



CARRY HANDLE

B5006

FEATURES

- Back pack has strong hard padded carry handle.
- Suitable for decoration with badging, embroidery and heat transfer.
- Main compartment: secure padded laptop section – multi pocket section to accommodate mobile and hard copy docs.
 - Internal connecting computer charge cables to external bag charge connector.
- External face has three compartments with concealed zips.
- One luggage strap has internal zip pocket. Lower back zip compartment with smart sleeve feature that allows attachment over extendable luggage handles.

FABRIC

- 100%Nylon waterproof with PVC coating oxford, 500D.

SIZE

- 290mm(W) x 415mm(H) x 160mm(D)
19 litres capacity.

UNIT WEIGHT

- 1.1kg



MARL BLACK



MARL CHARCOAL

EXECUTIVE BACKPACK



B5000

FEATURES

- Double zippered large main compartment.
- Padded laptop pocket with velcro closure in the large main compartment.
- Single zippered phone /CD /MP3 player pocket secured with leather edging on top of main compartment for documents.
- Double zippered front compartment contains phone pocket, elastic pen holder, card holder, ID window with screen mesh, key clip holder, single zippered pocket for wallet.
- Elastic mesh slip pockets on sides.
- Padded air mesh back panels and straps.

FABRIC

- Jacquard Nylon with PVC Backing 1680D.

SIZE

- 330mm(W) x 490mm(H) x190mm(D)
30.7 litres capacity



WINNER SPORTS BAG

B2020 UNISEX

FABRIC

- Polyester with PVC backing - 600D

FEATURES

- Suitable for decoration with badging, embroidery and digital transfer
- Large U-shaped double-zippered main compartment
- 2 carry handles with velcro closure
- Mesh pocket on left side, adjustable and detachable
- webbing shoulder strap with padding
- Studded base for durability
- 650 (W) x 320 (H) x 270 (D) mm
- 56.2 litres capacity.



BASIC SPORTS BAG

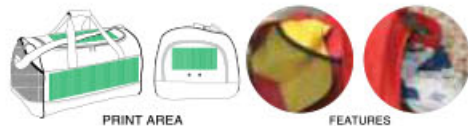
B2000 UNISEX

FABRIC

- Polyester with PVC backing - 600D

FEATURES

- Suitable for decoration with badging, embroidery and digital transfer
- U-shaped double-zippered main compartment
- Mesh pocket on right side
- Left side with zipped compartment for shoes or wet items, with 2 gun metal eyelets outside pocket for ventilation.
- Reinforced carry handles
- Adjustable and detachable shoulder strap
- Plastic feet on base
- Baseboard padding at bottom of bag to retain shape
- 510 (W) x 350 (H) x 380 (D) mm,
- 67.8 litres capacity.



TRAVELER LUNCH COOLER BAG

B6002 UNISEX

FABRIC

- Polyester with PVC backing - 600D

FEATURES

- Suitable for decoration with badging, embroidery and digital transfer
- Insulated cooler
- Double-zippered compartments
- Adjustable shoulder strap
- Double zippered puller
- Zippered pocket on front
- 280 (W) x 250 (H) x 180 (D) mm,
- 12.6 litres capacity.



HEXA 6-CAN COOLER BAG

B6001 UNISEX

FABRIC

- Polyester with PVC backing - 420D

FEATURES

- Suitable for decoration with badging, embroidery and digital transfer
- Insulated cooler
- Adjustable and detachable shoulder strap
- Double zippered main compartment
- Front edge to edge pocket.
- 210 (W) x 160 (H) x 140 (D) mm,
- 375ml x 6 capacity



AREA DUFFEL BAG



1003 UNISEX

FABRIC

- 100% polyester

FEATURES

- Cylinder duffel
- One large main compartment, one external zipped compartment, YKK tonal nylon zip, reinforced adjustable shoulder strap and handles
- Mid weight, 400 GSM
- One size 300mm x 590mm
- 53 litres capacity



BLACK

FITNESS TOWEL

TW05 UNISEX

FABRIC

- 390gsm - 100% Cotton

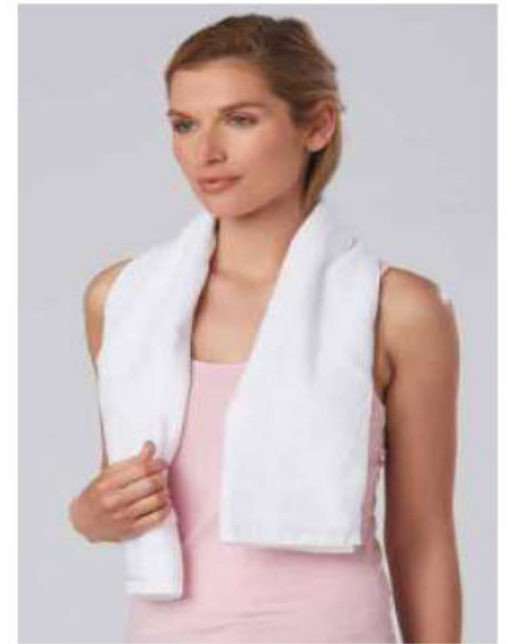
FEATURES

- Size: 1100 (L) x 300 (W) mm
- Print area: Max. 60mm in height



NAVY

WHITE



CONTRAST DUFFEL BAG



1020 UNISEX

FABRIC

- 100% Recycled Polyester

FEATURES

- One large main compartment, one external zipped compartment, small internal zipped pocket.
- YKK tonal nylon zip, reinforced adjustable contrast shoulder strap and handles
- Heavy weight, 420 GSM
- One size 300mm x 590mm
- 53 litres capacity



CAMEL/BLACK



COAL/BLACK



GOLF TOWEL WITH RING & HOOK

TW01A UNISEX

FABRIC

- 560gsm - 100% Cotton

FEATURES

- 100% Cotton yarn dyed towel with dobby border
- One side terry towel
- And the other side with velour finish
- Size: 380 (W) x 650 (L) mm
- Print area: Max. 70mm in height



BLACK

MOCHA

NAVY

RED

WHITE



Let's Change the Way You Gift!

Why not radically gift this year?



Sunrise Smoothie Tumbler

S895



Vera 600ml Glass Bottle

S892



S3100



S3100



S3101



S3102



S900

S900



S896





Olive Reusable Cup

S903



Grano Wheat Straw Water Bottle

NP163





S910



S777



S935



D881



D880

Ecograin Collection



S803



S185



S705



S888



121712



122000



124813



124812



126575

118938

117677



108030



113808



105286



113376



120619



113786



Branded Motivational Smart Water Bottle

bmswb



32OZ / 1000ML

- Material and Child Material



32OZ / 1000ML

- Material and Child Material



32OZ / 1000ML

- Material and Child Material



32OZ / 1000ML

- Material and Child Material

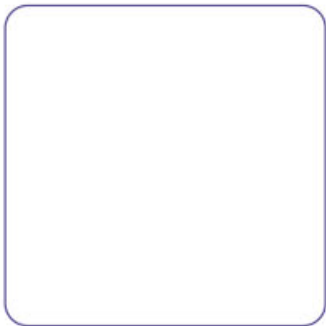
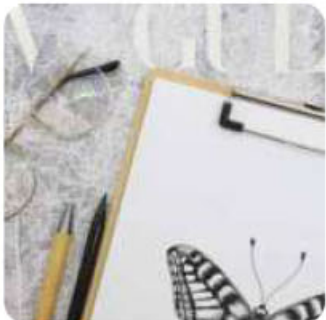
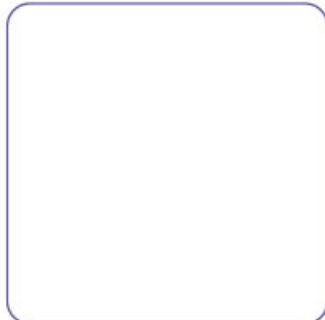


32OZ / 1000ML

- Material and Child Material



Create a thankful mindset!



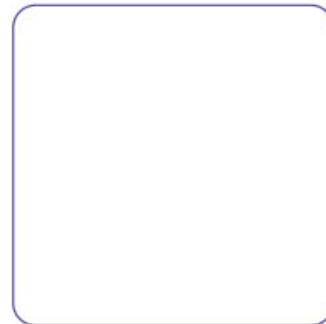
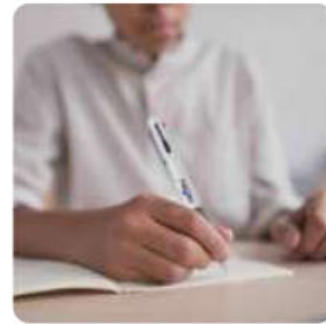
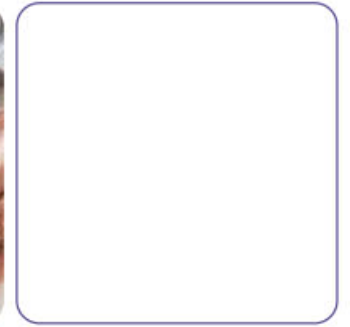
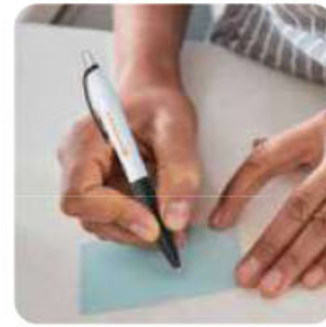


Vitra Pen | Xola Pens



NP160

NP161





F440



F450



F549



F037



F117



F339



F343



F390



F460



F018



F144



F339



F392



F343



F440



P704



F892



F901



P122



NP161



F105



200223



115859



116849



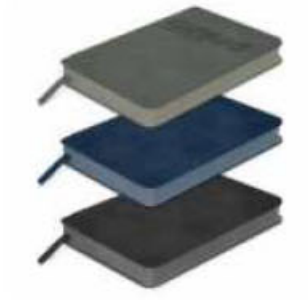
117189



112397



113892



111459



120941



113088



Paper Notebooks | Notepads

D426



T505



121725
121726



Get Creative with Colours!

11336 | T323



110787



100420



117337



100422



Playtime Colouring Set



109028



109032



113246





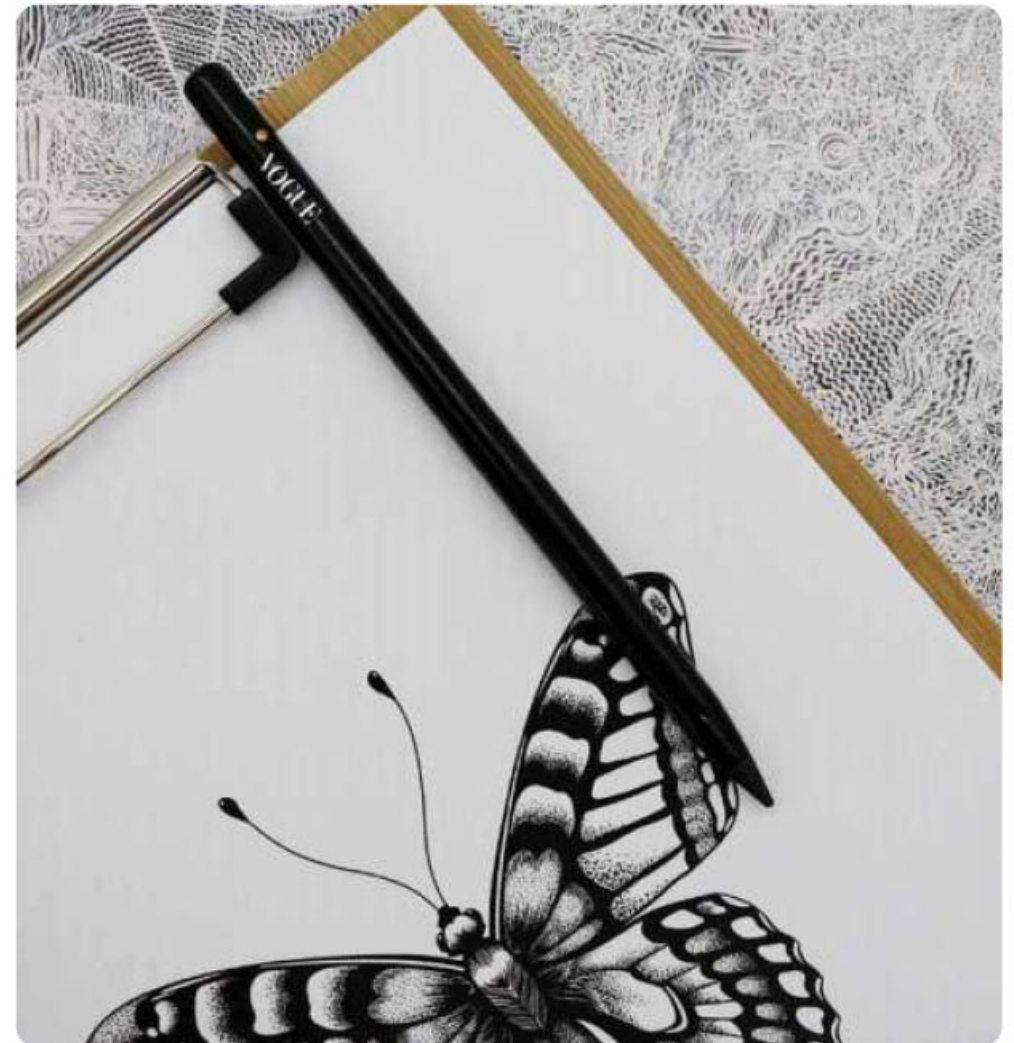
Ecowriter Bamboo
Clipboard

B119



Evermore Graphite Pencil

D189





Have an Attitude of Gratitude !





Jute Tote Bag



RB306



RB305



RB304

Cotton Tote Bag



100420



117337



100422



107689



116873



109135



113696



107669



113760



112970



107147



Wine Bag



109081



109082

Laptop Bag



123558



121135

Nevis Dry Bag

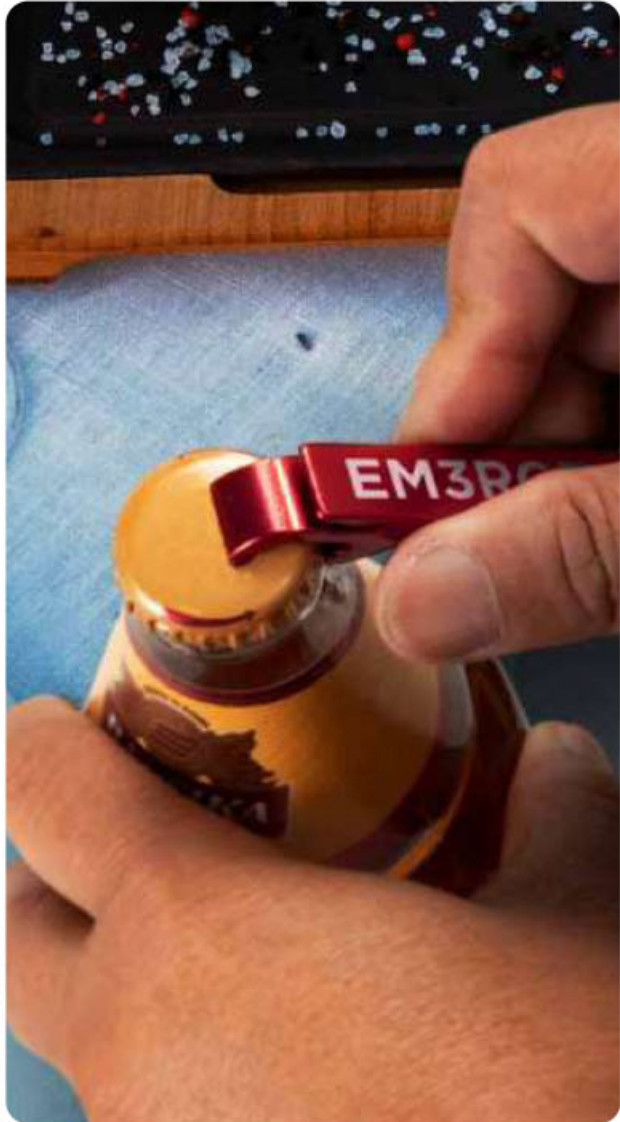
112979 | 114083



Discover Positive Branding!



Snappy Metal Bottle Opener Key Ring



123584



106174

Reflector Key Ring



118534



118532



106176



117052

House Shaped Key Ring



123015



109082



109082



109082

Fidget Spinner



113016

Lanyard | Expo



116608



116609



115696



108490

Plush Toy and Piggy Bank

117863



117005



117007



117863



117009



117867



120188



117004



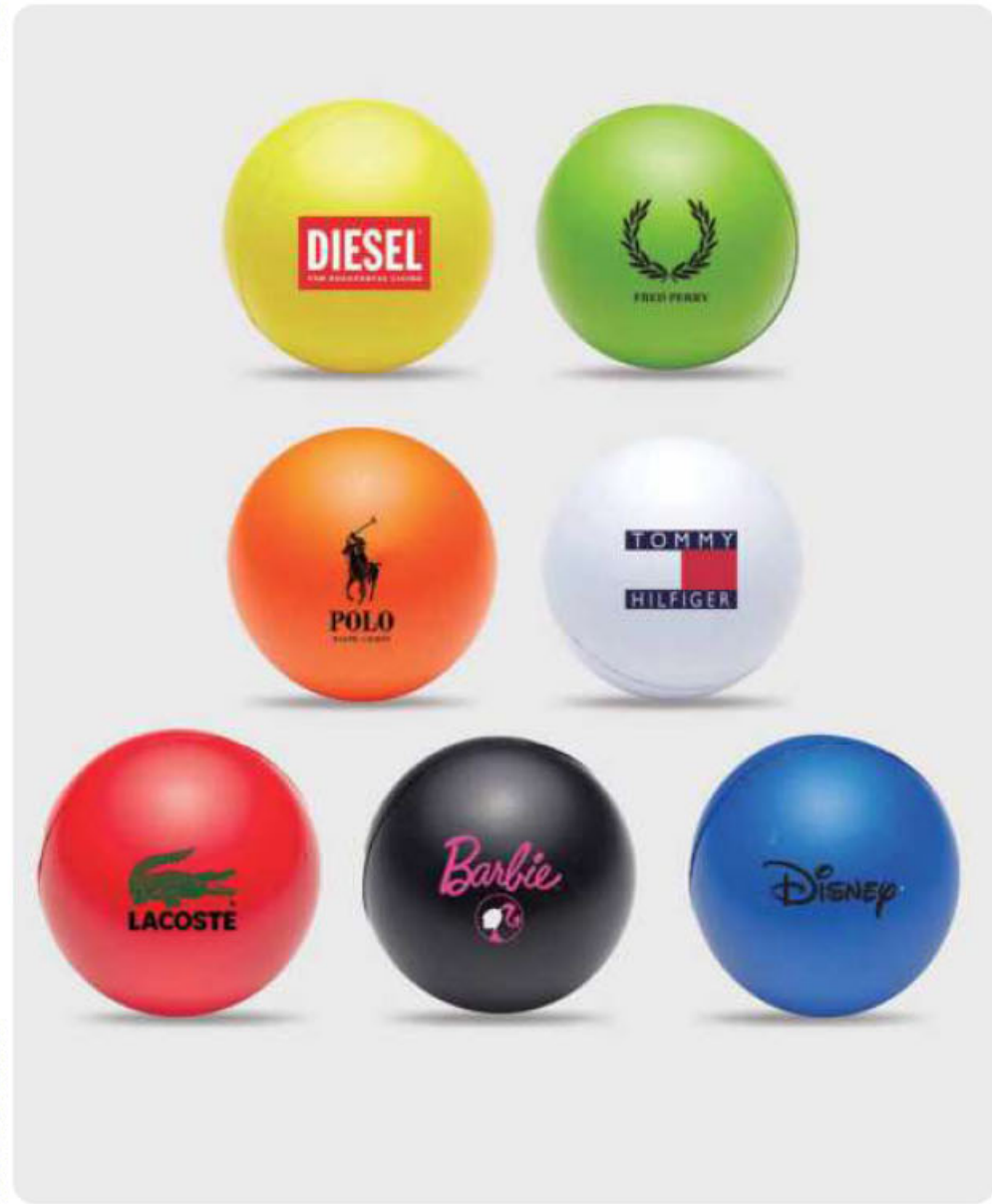
114175



117862



Stress Relievers



T741



T762



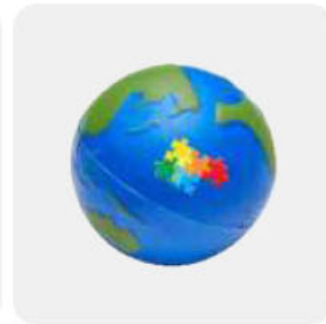
T763



T775



T777



T778



T747



T768



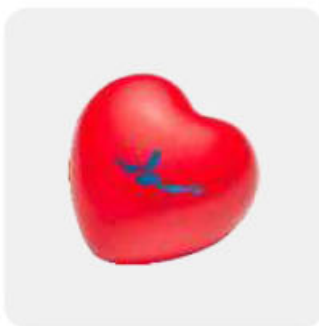
T769.LE



T742



T743



T763



T766



T772



T773



T776



T779



T745



T742



T771



T767



T770

Rugby Ball Promo

117243



Netball Pro | Volleyball Pro

117255 | 117256





Soccer Ball Pro

117251



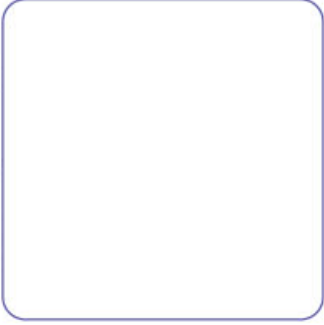
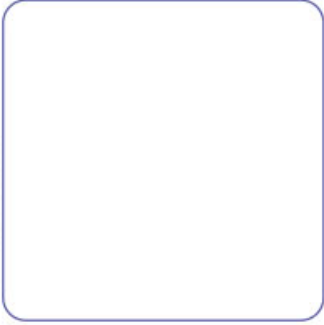
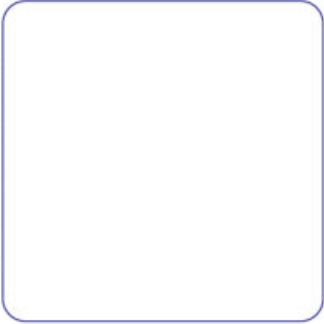
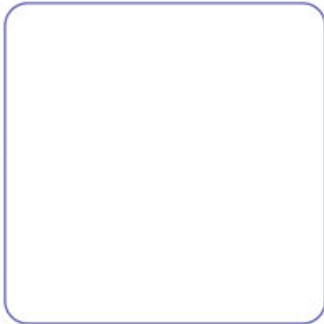
Soccer Ball Pro

117251





Ready to be the Difference?



Bamboo Charging Stand



118495



126409



126409



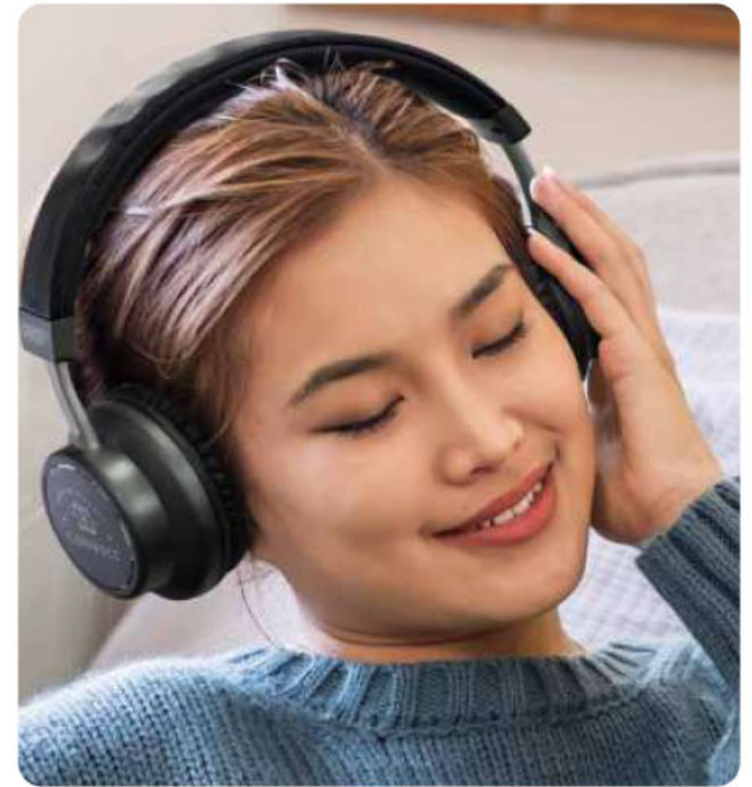
116181



122402



125912 | 116032



Earbuds



125278



125277



118865



116764



118865



Bamboo Bluetooth Speaker



116648



126248



123579



116764

Bamboo Bluetooth Speaker

Helix Mix & Match Flash Drive

4GB | 8GB | 16GB

105604 | 105605 | 108474



105605



105604



121402



117009



117867



120188



107909



110485



H668

Make Your Gifting,
More
Memorable!





Give Yourself a Break!



200304



D910



125317



SC002



H200



Carabiner Hand Sanitiser

30ml | 60ml
110462 | 200323



Aroma Coffee Coasters

B105



Aubrey Coffee/Tea Set

B137



St. Andrews Magnetic Cheeseboard and Knife Set

D388



Portsea Serving Board

B138



BUILDING & CONSTRUCTION



TRUEDRY® TEE

TrueDry® Tee with unique stitch design shoulder panelling fabric

TS209 UNISEX

FABRIC

- TrueDry® Cotton Back Micromesh with Moisture-Wicking
- 160gsm
- 60% Cotton, 40% Polyester

FEATURES

- Unique TrueDry® fabric moisture control feature
- Unique design treatment shoulder panels
- Cool moisture wicking feature fabric



MENS SIZE	2XS	XS	S	M	L	XL	2XL	3XL	5XL	7XL
HALF CHEST	47	50	53.5	56	58.5	61	63.5	66	71	76
LADIES SIZES	8	10	12	14	16	18	20	22	24/26	28/30
HALF CHEST	47	50	53.5	56	58.5	61	63.5	66	71	76

MENS OUTDOOR LONG SLEEVE SHIRT

ZW460

FABRIC

- 100% Polyester Ripstop
- 100 gsm

FEATURES

- Our lightest weight shirt ever at just 100 gsm
- Super breathable lightweight fabric to keep you cool all day
- Extra-large under arm mesh and upper back venting to maximise air flow
- Crinkle resistant light weight fabric makes this shirt easy to pack in a small bag
- Two chest pockets
- One mobile phone chest zip pocket
- Roll up tab sleeves
- Contrast colour inside placket
- Modern fit

SIZES

- 2XS - 5XL, 7XL



S/S TRUEDRY® POLO

Truedry® Polo with unique stitch design shoulder panelling

PS209 UNISEX

FABRIC

- Composition : TrueDry® 60% Cotton / 40 % Polyester (cool moisture wicking feature)
- Weight : 160gsm
- Wash : Easy Care

FEATURES

- Unique TrueDry® fabric moisture control feature
- Self fabric collar
- Unique design treatment shoulder panels
- Come with loose pocket



MENS SIZE	2XS	XS	S	M	L	XL	2XL	3XL	5XL	7XL
HALF CHEST	47	50	53.5	56	58.5	61	63.5	66	71	76
LADIES SIZES	8	10	12	14	16	18	20	22	24/26	28/30
HALF CHEST	47	50	53.5	56	58.5	61	63.5	66	71	76

MANS SIZES	XXS	XS	S	M	L	XL	2XL	3XL	4XL	5XL	7XL
TO FIT CHEST	86	101	106	111	116	124	132	140	148	162	166

MENS HI-VIS SLEEVELESS TEE



ZH297

FABRIC

- 85% Polyester 15% Rayon
- 180gsm

FEATURES

- Drop armhole
- Soft lightweight and breathable fabric
- Natural feel against the skin for comfort
- Modern fit
- Taped shoulder and neck to help maintain shape

SIZES

- 2XS - 5XL, 7XL



YELLOW



ORANGE

MENS SIZE	2XS	XS	S	M	L	XL	2XL	3XL	4XL	5XL	7XL
TO FIT CHEST	87	92	97	102	107	112	117	122	135	145	160

MENS HI-VIS TEE SHIRT



ZH290

FABRIC

- 85% Polyester 15% Rayon
- 180gsm

FEATURES

- Soft lightweight and breathable fabric
- Natural feel against the skin for comfort
- Modern fit
- Taped shoulder and neck to help maintain shape

SIZES

- 2XS - 5XL, 7XL



ORANGE



YELLOW

MENS SIZE	2XS	XS	S	M	L	XL	2XL	3XL	4XL	5XL	7XL
TO FIT CHEST	87	92	97	102	107	112	117	122	135	145	160

MENS HI-VIS SQUAD T-SHIRT

Hi-Vis CoolDry® mini waffle safety tee



ZW505

FABRIC

- 100% Polyester
- 145gsm

FEATURES

- Highly breathable and moisture wicking
- Button free placket – Food industry safe
- Side arm design detail

SIZES

- 2XS - 6XL



ORANGE



YELLOW

MANS SIZES	XXS	XS	S	M	L	XL	2XL	3XL	4XL	5XL	6XL
TO FIT CHEST(CM)	87	92	97	102	107	112	117	122	135	145	160
LADIES SIZES	8	10	12	14	16	18	20	22	24		
HALF CHEST	35	37	39	41	43	46	48	50	52		

HI-VIS S/S COTTON BACK POLO

6HPS

FABRIC

- 55% Cotton for comfort, and 45% Polyester for durability
- 170gsm Cotton rich micro mesh fabric

FEATURES

- JB's Dri™ moisture wicking fabric designed to help keep you cool and dry
- Complies with Standard AS/NZS 4399:2017 for UPF Protection (UPF 50+)
- Complies with Standards AS/NZS 1906.4:2010 AS/NZS 4602.1:2011 Day Only
- Reinforced chest pocket with pen insert
- Straight hem with side splits
- 2XS Lime/Navy, Orange/Navy only
- 6/7XL only available in Lime/Navy



LIME/BOTTLE (UPF 50+)

LIME/NAVY (UPF 50+)

ORANGE/NAVY (UPF 50+)

SIZE	2XS	XS	S	M	L	XL	2XL	3XL	4XL	5XL	6/7XL
½ CHEST(CM)	48.5	51	53.5	56	58.5	61	63.5	66.5	70	73.5	78.5
SP LENGTH (CM)	67.5	69	71.5	74	76.5	79	81	82	83	84	86

HI-VIS L/S TRADITIONAL POLO

6HVPL

FABRIC

- 100% Polyester for durability
- 160gsm micro mesh fabric

FEATURES

- JB's Dri™ moisture wicking fabric designed to help keep you cool and dry
- Reinforced chest pocket with pen insert
- Straight hem with side splits
- Easy care fabric
- Quick drying
- Classic Fit



LIME/BLACK (UPF 50+)

LIME/BOTTLE (UPF 50+)

LIME/NAVY (UPF 50+)

LIME/RED (UPF 50+)

LIME/ROYAL (UPF 50+)

LIME/WHITE (UPF 50+)

ORANGE/BLACK (UPF 50+)

ORANGE/NAVY (UPF 50+)

SIZE	2XS	XS	S	M	L	XL	2XL	3XL	4XL	5XL	6/7XL	8/9X
½ CHEST(CM)	48.5	51	53.5	56	58.5	61	63.5	66.5	70	73.5	78.5	83.5
SP LENGTH (CM)	67.5	69	71.5	74	76.5	79	81	82	83	84	86	87

JB'S HI-VIS L/S TRADITIONAL T-SHIRT

6HVTL

FABRIC

- 100% Polyester
- 160gsm micro mesh fabric for durability

FEATURES

- JB's Dri moisture wicking fabric designed to help keep you cool and dry
- Complies with Standard AS/ NZS 1906.4: 2010 and AS/NZS 4602.1:2011 Day only
- Complies with Standard AS/NZS 4399:2017 for UPF Protection (UPF 50+)
- Reinforced chest pocket with pen insert
- Straight hem with side splits
- Easy care, quick drying



LIME/NAVY



ORANGE/NAVY

6HVTL UNISEX CLASSIC FIT	XS	S	M	L	XL	2XL	3XL	4XL	5XL
GARMENT CHEST (CM)	51	53.5	56	58.5	61	63.5	66.5	70	73.5

HI-VIS S/S COTTON POLO

6CPHV

FABRIC

- 100% Cotton for 100% comfort
- 180gsm fabric

FEATURES

- Complies with Standard AS/NZS 4399:2017 for UPF Protection (UPF 50 +)
- Complies with Standards AS/NZS 1906.4:2010 AS/NZS 4602.1:2011 Day Only
- Contrast striped collar, front panel and herringbone trim inside placket
- Reinforced chest pocket with pen insert
- Straight hem with side splits



YELLOW



ORANGE

SIZE	2XS	XS	S	M	L	XL	2XL	3XL	4XL	5XL
½ CHEST (CM)	48.5	51	53.5	56	58.5	61	63.5	66.5	70	73.5
SP LENGTH (CM)	67.5	69	71.5	74	76.5	79	81	82	83	84

HI-VIS L/S CREW NECK COTTON T-SHIRT

6HVTN

FABRIC

- 100% cotton for comfort
- 180gsm fabric

FEATURES

- Straight hem with side splits
- Complies with Standard AS/NZS 4399:2017 for UPF Protection (UPF 50+)
- Complies with Standards AS/NZS 1906.4:2010 AS/NZS 4602.1:2011 Day Only



ORANGE/NAVY



ORANGE/NAVY

6HVTN UNISEX CLASSIC FIT	XS	S	M	L	XL	2XL	3XL	4XL	5XL
GARMENT CHEST (CM)	51	53.5	56	58.5	61	63.5	66.5	70	73.5

HI-VIS L/S COTTON POLO

6CPHL

FABRIC

- 100% cotton for comfort
- 180gsm fabric

FEATURES

- Complies with Standard AS/NZS 4399:2017 for UPF Protection (UPF 50 +)
- Complies with Standards AS/NZS 1906.4:2010 AS/NZS 4602.1:2011 Day Only
- Contrast striped collar, front panel and herringbone trim inside placket
- Reinforced chest pocket with pen insert
- Straight hem with side splits



ORANGE/BLACK (UPF 50+)



YELLOW/NAVY (UPF 50+)

SIZE	2XS	XS	S	M	L	XL	2XL	3XL	4XL	5XL
½ CHEST (CM)	48.5	51	53.5	56	58.5	61	63.5	66.5	70	73.5
SP LENGTH (CM)	67.5	69	71.5	74	76.5	79	81	82	83	84



JB'S HI-VIS S/S RIPPA SUB POLO

Hi-vis S/S rippa sub polo Striking and safe

6HVRS S/S

FABRIC

- 100% Polyester
- 160gsm micro-mesh fabric for durability

FEATURES

- JB's Dri™ moisture wicking fabric designed to help keep you cool and dry
- Complies with Standard AS/NZS 1906.4: 2010 and AS/NZS 4602.1:2011 Day
- Complies with Standard AS/NZS 4399:2017 for UPF Protection (UPF 50+)
- Jacquard Hi-Vis stripe insert collar
- Raglan Sleeve
- Reinforced chest pocket with pen insert
- Straight hem with side splits
- Easy care fabric, quick drying



LIME

ORANGE

ADULTS SIZES	XS	S	M	L	XL	2XL	3XL	4XL	5XL
CHEST CM	51	53.5	56	58.5	61	63.5	66.5	70	73.5
SP LENGTH CM	69	71.5	74	76.5	79	81	82	83	84



HI-VIS S/S (D+N) TRADITIONAL POLO

A Hi-vis staple

6HVST

FABRIC

- 100% Polyester
- 160gsm micro mesh fabric

FEATURES

- JB's Dri™ moisture wicking fabric designed to help keep you cool and dry
- JB's reflective tape stands up to 50 times domestic wash
- Complies with Standard AS/NZS 4399:2017 for UPF Protection
- Complies with Standards AS/NZS 1906.4:2010 AS/NZS 4602.1:2011 Day and Night
- Easy snip- off stay stitch at welt pocket opening to keep pocket in shape
- Straight hem with side splits
- Easy care fabric
- Quick drying
- Classic Fit



LIME/NAVY

ORANGE/NAVY

ADULTS SIZES	XS	S	M	L	XL	2XL	3XL	4XL	5XL
CHEST CM	51	53.5	56	58.5	61	63.5	66.5	70	73.5
SP LENGTH CM	69	71.5	74	76.5	79	81	82	83	84



HI-VIS L/S RIPPA SUB POLO

Hi-vis L/S rippa sub polo A strong look

6HVRL L/S

FABRIC

- 100% Polyester for durability
- 160gsm micro-mesh fabric

FEATURES

- JB's Dri™ moisture wicking fabric designed to help keep you cool and dry
- Complies with Standards AS/NZS 1906.4:2010 and AS/NZS 4602.1:2011 Day Only
- Complies with Standard AS/NZS 4399:2017 for UPF Protection (UPF 50+)
- Jacquard Hi-Vis stripe insert collar
- Raglan Sleeve
- Chest pocket with pen insert
- Straight hem with side splits
- Easy care fabric, quick drying



ORANGE/NAVY

LIME/NAVY

ADULTS SIZES	XS	S	M	L	XL	2XL	3XL	4XL	5XL
CHEST CM	51	53.5	56	58.5	61	63.5	66.5	70	73.5
SP LENGTH CM	69	71.5	74	76.5	79	81	82	83	84



HI-VIS L/S (D+N) TRADITIONAL POLO

A Hi-vis staple

6HVSL L/S

FABRIC

- 100% Polyester for durability
- 160gsm micro mesh fabric

FEATURES

- JB's Dri™ moisture wicking fabric designed to help keep you cool and dry
- JB's reflective tape stands up to 50 times domestic wash
- Complies with Standard AS/NZS 4399:2017 for UPF Protection
- Complies with Standards AS/NZS 1906.4:2010 AS/NZS 4602.1:2011 Day and Night
- Easy snip- off stay stitch at welt pocket opening to keep pocket in shape
- Straight hem with side splits
- Easy care fabric
- Quick drying
- Classic Fit



LIME/NAVY

ORANGE/NAVY

ADULTS SIZES	XS	S	M	L	XL	2XL	3XL	4XL	5XL
CHEST CM	51	53.5	56	58.5	61	63.5	66.5	70	73.5
SP LENGTH CM	69	71.5	74	76.5	79	81	82	83	84



HI-VIS TWO-TONE LIGHTWEIGHT S/S SHIRT WITH TAPE

MA802

FABRIC

- 100% Cotton Drill 155g

FEATURES

- 2 pockets for secure storage
- 100% Cotton fabric for added comfort and breathability
- Contrast panels for protection against dirt
- Premium reflective tape for increased visibility
- Button placket opening
- 50+ UPF rated fabric to block 98% of UV rays



ORANGE/NAVY (UPF 50+)

YELLOW/NAVY (UPF 50+)

YELLOW/GREEN (UPF 50+)

ADULTS SIZES	XS	S	M	L	XL	2XL	3XL	4XL	5XL
CHEST CM	51	53.5	56	58.5	61	63.5	66.5	70	73.5
SP LENGTH CM	69	71.5	74	76.5	79	81	82	83	84

HI-VIS TWO-TONE LIGHTWEIGHT L/S SHIRT WITH TAPE

MA801

FABRIC

- 100% Cotton Drill 155g

FEATURES

- 2 pockets for secure storage
- 100% Cotton fabric for added comfort and breathability
- Gusset sleeves for added safety
- Underarm cool flow mesh panel for ventilation
- Back vent with cool flow mesh
- 50+ UPF rated fabric to block 98% of UV rays
- Contrast panels for protection against dirt



YELLOW/NAVY (UPF 50+)

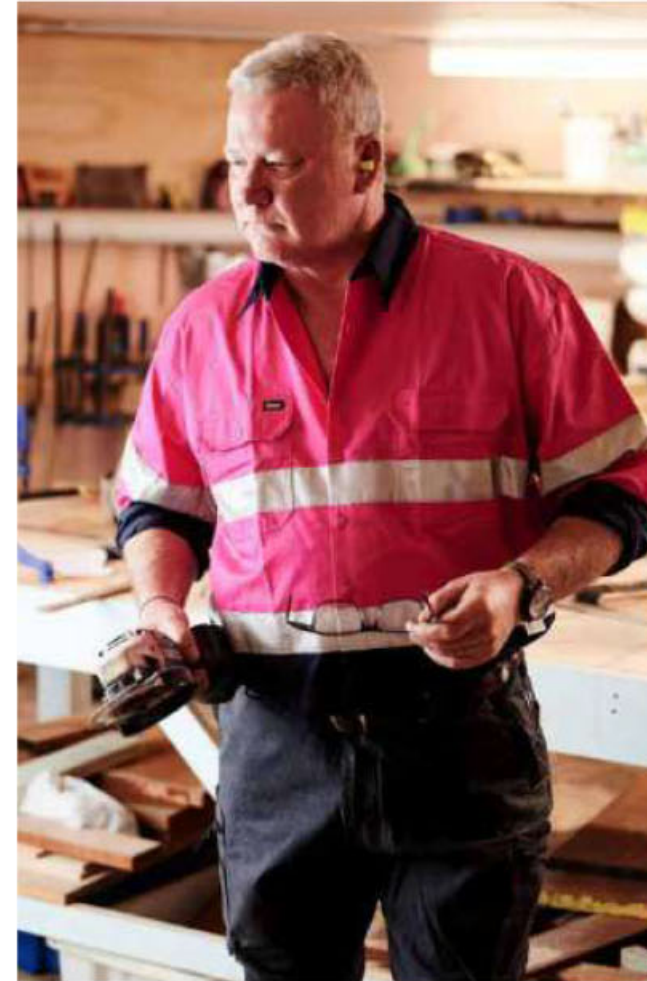
ORANGE/NAVY (UPF 50+)

YELLOW/GREEN (UPF 50+)

ADULTS SIZES	XS	S	M	L	XL	2XL	3XL	4XL	5XL
CHEST CM	51	53.5	56	58.5	61	63.5	66.5	70	73.5
SP LENGTH CM	69	71.5	74	76.5	79	81	82	83	84

TAPED HI-VIS COOL LIGHTWEIGHT SHIRT

Hi-Vis CoolDry® mini waffle safety tee



BS6896

FABRIC

- 100% Cotton Preshrunk Drill 155gsm
- 100% Cotton Open Mesh 125gsm

FEATURES

- Reflective taped hoop pattern
- Vertical cotton mesh back ventilation
- Underarm cotton mesh ventilation
- Two button down chest pockets
- Pen division on left chest pocket
- Two piece contrast coloured structured collar
- Full gusset sleeve cuff



PINK/NAVY (UPF 50+)

YELLOW/BOTTLE (UPF 50+)

YELLOW/NAVY (UPF 50+)

ORANGE/NAVY (UPF 50+)

ADULTS	XS	S	M	L	XL	2XL	3XL	4XL	5XL
NECK SIZE	36	37	39	41	44	46	48	50	52
CHEST SIZE	81	89	97	105	113	121	129	137	145

HI-VIS ARROW SUB POLO WITH SEGMENTED TAPE

6HAL/6HAS

FABRIC

- 100% Polyester for durability
- 160gsm jacquard fabric for increased breathability

FEATURES

- JB's Dri™ moisture wicking fabric designed to help keep you cool and dry
- Complies with standards AS/NZS 1906.4:2010 and AS/NZS 4602.1:2011 D&N
- Complies with Standard AS/NZS 4399:2017 for UPF Protection (UPF 50+)
- Reinforced chest insert pocket
- Sublimated lower body panel
- Matching arrow design with segmented stretch reflective tape



6HAL Long Sleeve



6HAS Short Sleeve

ADULTS SIZES	XS	S	M	L	XL	2XL	3XL	4XL	5XL
CHEST CM	51	53.5	56	58.5	61	63.5	66.5	70	73.5
SP LENGTH CM	69	71.5	74	76.5	79	81	82	83	84



HI-VIS L/S STRETCH WORK SHIRT

6H6SWL

FABRIC

- 98% Cotton 2% Elastane
- 150gsm twill

FEATURES

- Complies with Standard AS/NZS 4399:2017 for UPF Protection (UPF 50+)
- Complies with Standard AS/NZS 1906.4:2010 and AS/NZS 4602.1:2011 Day
- Wide back yoke with concealed mesh, cooling gussets at underarms
- Front chest pockets with button down flaps and pen insert
- Contrast panel on front, lower back and sleeve
- Curved hem with back tail styling
- Two-piece collar



FRONT BACK



FRONT BACK



ADULTS	3XS	2XS	XS	S	M	L	XL	2XL	3XL	4XL	5XL
HALF CHEST	46	48	50	52	54	56.25	58.75	61.75	66.5	71	76
CB LENGTH	75	76	76	78	80	82	83	84	85	86	87
COLLOR	32	34	36	38	40	41.5	43	45	47	49	51



BAD ESSENTIAL™ HI-VIS FLEECE HOODIE

UNISEX

FEATURES

- Extra thick fabric will keep you warm through the coldest weather.
- 3M Scotchgard™ water and stain repellent finish.
- Kangaroo pouch pocket on front.
- Stress point bar-tacking for extra strength.
- Mesh lined hood to prevent internal staining.
- Elastic waist and cuffs to retain body heat and ensure a perfect fit.
- UPF50+ Excellent Protection.
- Complies with AS/NZS 4602.1:2011 High-Visibility Safety Garments Class Day



MANS SIZES	XS	S	M	L	XL	2XL	3XL
TO FIT CHEST(CM)	87	92	97	102	107	112	117
TO FIT CHEST(INCH)	34	36	38	40	42	44	46



BAD WATERPROOF RAIN-DEFEND™ HI-VIS 1/4 ZIP FLEECE JUMPER

UNISEX

FEATURES

- Waterproof Rain-Defend™ fleece fabric
- Windproof
- Extra thick and warm
- Front pouch with internal phone
- Waterproof zip pocket
- Right chest pocket
- Pen and utility pockets on left sleeve
- 2 side pockets
- Collar and 1/4 zip opening for heat regulation
- Elasticated wrists and waist to capture heat
- Designed in Melbourne (registered)



MANS SIZES	XS	S	M	L	XL	2XL	3XL
TO FIT CHEST(CM)	87	92	97	102	107	112	117
TO FIT CHEST(INCH)	34	36	38	40	42	44	46



BAD WATERPROOF RAIN-DEFEND™ HI-VIS FLEECE HOODIE

UNISEX

FEATURES

- Waterproof Rain-Defend™ fleece fabric
- Windproof
- Heavyweight extra thick and warm
- Front pouch with internal phone waterproof zip pocket
- Right chest pocket
- Pen and utility pockets on left sleeve
- 2 side pockets
- Adjustable hood with drawstring
- Elasticated wrists and waist to capture heat
- Lined hood
- Designed in Melbourne (registered)



MANS SIZES	XS	S	M	L	XL	2XL	3XL
TO FIT CHEST(CM)	87	92	97	102	107	112	117
TO FIT CHEST(INCH)	34	36	38	40	42	44	46



BAD WATERPROOF RAIN-DEFEND™ HI-VIS FULL-ZIP FLEECE HOODIE

UNISEX

FEATURES

- Waterproof Rain-Defend™ fleece fabric
- Windproof
- Extra thick and warm
- Full-Zip opening for easy on/off and heat regulation
- Right chest pocket
- Pen and utility pockets on left sleeve
- 2 side pockets
- Adjustable hood with drawstring
- Elasticated wrists and waist to capture heat
- Lined hood
- Designed in Melbourne (registered)



MANS SIZES	XS	S	M	L	XL	2XL	3XL
TO FIT CHEST(CM)	87	92	97	102	107	112	117
TO FIT CHEST(INCH)	34	36	38	40	42	44	46



HI-VIS TWO-TONE FLEECE HOODIE

SW38 UNISEX

FABRIC

- 320gsm - Fleece
- 80% Polyester / 20% Cotton

FEATURES

- Safety drawstring inside the garment ensures there is no catching
- Kangaroo slouch pockets provide front storage space
- Pencil pockets on left sleeve
- Mobile and tool storage pockets beside slouch pocket
- Ribbed cuffs and waistband
- Conforms to AS/NZS 4602.1:2011 Class D
- Day safety wear

MANS SIZES	XXS	XS	S	M	L	XL	2XL	3XL	4XL	5XL	6XL
TO FIT CHEST(CM)	87	92	97	102	107	112	117	122	135	145	160
LADIES SIZES	8	10	12	14	16	18	20	22	24		
HALF CHEST	35	37	39	41	43	46	48	50	52		



ORANGE/NAVY

LIME/NAVY

BACK

PENCIL POCKET



HI-VIS PULLOVER HOODIE

Be Noticed in this Hi-Vis Pullover hoodie

6HVPH UNISEX

FABRIC

- 80% Polyester for durability, 20% Cotton for comfort
- 280gsm Fleece fabric

FEATURES

- Contrast panel at body and sleeves
- Rib Basque sleeve cuffs and bottom hem for improved durability
- Kangaroo pocket on C.F and pen pocket on sleeve
- Complies with standard AS/NZS 1906.4:2010 and AS/NZS 4602.1:2011 Day Only
- Hood with drawcord
- Easy care fabric
- 2XS, 6/7XL available only in Orange/ Navy & Lime/Navy
- Classic fit



LIME/BLACK (UPF 50+)

LIME/NAVY (UPF 50+)

LIME/CHARCOAL (UPF 50+)



ORANGE/CHARCOAL (UPF 50+)

ORANGE/NAVY (UPF 50+)

SIZE	2XS	XS	S	M	L	XL	2XL	3XL	4XL	5XL	6XL
1/2 CHEST(CM)	52.5	55	57.5	60	62.5	65	67.5	70	72.5	75	80
SP LENGTH(CM)	67.5	69	71.5	74	76.5	79	81	82	83	84	86

HI-VIS PULLOVER HOODIE

ZT484

FABRIC

- 100% Polyester Fleece
- 320gsm

FEATURES

- Warm, soft 320 gsm low pill fleece
- Microfiber lined hood for added comfort
- Heavy duty zips and reflective piping detail
- Mobile phone chest pocket with zip closure
- Two pockets to keep your hands warm and store your tools
- Ribbed elastic cuff and waist to ensure this hoodie doesn't get in the way when you're working



ORANGE/
CHARCOAL
(UPF 50+)

ORANGE/NAVY
(UPF 50+)

YELLOW/NAVY
(UPF 50+)

YELLOW/
CHARCOAL
(UPF 50+)

MENS SIZES	XXS	XS	S	M	L	XL	2XL	3XL	4XL	5XL	6XL
TO FIT CHEST(CM)	87	92	97	102	107	112	117	122	135	145	160
LADIES SIZES	8	10	12	14	16	18	20	22	24		
HALF CHEST	35	37	39	41	43	46	48	50	52		

HI-VIS FULL-ZIP HOODIE

ZT485

FABRIC

- 100% Polyester Fleece
- 320gsm

FEATURES

- Warm, soft 320 gsm low pill fleece
- Microfiber lined hood for added comfort
- Heavy duty zips and reflective piping detail
- Mobile phone chest pocket with zip closure
- Two pockets to keep your hands warm and store your tools
- Ribbed elastic cuff and waist to ensure this hoodie doesn't get in the way when you're working



ORANGE/
CHARCOAL
(UPF 50+)

ORANGE/NAVY
(UPF 50+)

YELLOW/NAVY
(UPF 50+)

YELLOW/
CHARCOAL
(UPF 50+)

HI-VIS HALF-ZIP PULLOVER

ZT476

FABRIC

- 100% Polyester Fleece
- 320gsm

FEATURES

- Warm soft 320 gsm low pill fleece lining perfect for cold days
- Half zip construction so you can let the air in when you're hot and block the wind out when you are cold
- Two kangaroo pockets with zips so your tools, keys or other valuables never fall out
- Woven double pen partition on the arm
- Chin guard for increased comfort



ORANGE/NAVY

YELLOW/NAVY



MENS SIZES	XS	S	M	L	XL	2XL	3XL
TO FIT CHEST(CM)	87	92	97	102	107	112	117
TO FIT CHEST(INCH)	34	36	38	40	42	44	46

HI-VIS TWO-TONE POLAR FLEECE

SW07

FABRIC

- 300gsm
- 100% Polyester - Anti Pill Fleece

FEATURES

- Contrast lower front of garment sleeve & cuffs
- Contrast lower front and sleeves
- Half zipper front
- Two side pockets on the side seams
- Conforms to AS/NZS 4602.1:2011 Class D, day use safety wear



FLUOROYELLOW/
NAVY

FLUOROORANGE/
NAVY



EASY FIT	S	M	L	XL	2XL	3XL	4XL	5XL	7XL
HALF CHEST	59	61.5	64	66.5	69	71.5	74	76.5	81.5



HI-VIS SAFETY JUMPER

SW32 UNISEX

FABRIC

- 320gsm low pill Brushed Fleece
- 80% Polyester / 20% Cotton

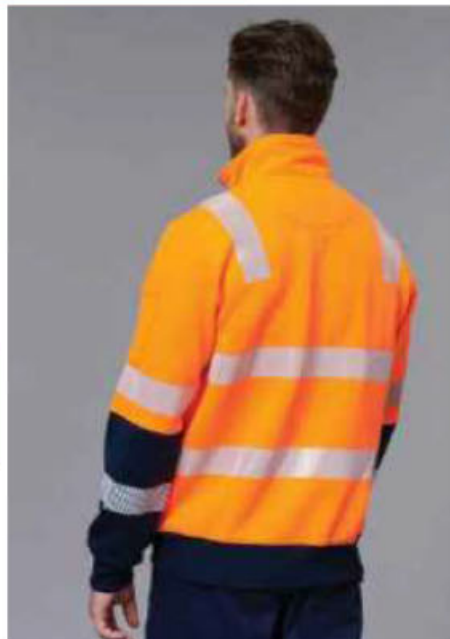
FEATURES

- Half-zip closure
- Two side hand pockets with zips
- Two pen pockets on the left sleeve
- Ribbed elastic cuff and waist
- Segmented reflective tapes in Bio Motion configuration for added comfort and visibility, allows flexibility in the fabric
- UV rating (UPF 50+) AS/NZS 4399:2017, Day/Night AS/NZS 4602.1:2011

SIZE	2XS	XS	S	M	L	XL	2XL	3XL	5XL	7XL
LADIES REF	8	10	12	14	16	18	20	22	24/26	28/30
CHEST	51	54	57.5	60	62.5	66	67.5	70	75	80



ORANGE/NAVY YELLOW/CHARCOAL YELLOW/NAVY



HI-VIS HALF-ZIP SEGMENTED TAPE FLEECE

6HZS UNISEX

FABRIC

- 80% Polyester for durability and 20% Cotton for comfort
- 280gsm Fleece fabric

FEATURES

- 1/2-zip collar and placket closure
- Rib basque and cuff
- Pen pocket at sleeve
- Arrow style segmented stretch reflective tape design
- Complies with AS/NZS 1906.4:2010 and AS/NZS 4602.1:2011 Day & Night

Australian Standards
AS/NZS 1906.4:2010
AS/NZS 4602.1:2011
Day & Night



LIME/NAVY



ORANGE/NAVY



ADULTS SIZES	XS	S	M	L	XL	2XL	3XL	4XL	5XL
CHEST CM	55	57.5	60	62.5	65	67.5	70	72.5	75
SP LENGTH CM	70	72	74	76	78	80	82	83	84



HI-VIS SAFETY JACKET

Hi-Vis Heavy Duty Softshell Jacket with 3M Scotchlite™ Reflective Tapes

SW30 UNISEX

FABRIC

- Shell back 100% Polyester
- 340 gsm

FEATURES

- Water/wind resistant
- Tough wearing & insulative
- Small contrast split on front/back and sleeve
- Hoop Pattern 3M Scotchlite™ reflective tapes for night visibility
- Conforms to AS/NZS 4602.1:2011 Class D/N, day & night use safety wear



YELLOW/NAVY

ORANGE/NAVY

SIZE	2XS	XS	S	M	L	XL	2XL	3XL	5XL	7XL
LADIES REF	8	10	12	14	16	18	20	22	24/26	28/30
CHEST	51	54	57.5	60	62.5	65	67.5	70	75	80

JB HI-VIS FLYING JACKET

Classic Hi-Vis jacket

6HV FJ UNISEX

FABRIC

- 100% Polyester 300 D with PU coating

FEATURES

- Quilted lining with polyfill for added warmth
- Waterproof rating 20,000mm with sealed seams
- Sleeve pocket with pen insert, two front pockets and one internal pocket
- Chunky knitted rib collar and cuffs
- ID pocket at chest
- Nylon zipper
- Complies with Standards AS/NZS 1906.4:2010 and AS/NZS 4602.1:2011 Day Only



ORANGE/NAVY

LIME/NAVY

ADULTS SIZES	2XS	XS	S	M	L	XL	2XL	3XL	4XL	5XL	6/7XL
CHEST CM	54.5	57	59.5	62	64.5	67	69.5	72	74.5	77	79.5
CB LENGTH CM	66	68	70	72	74	76	78	80	82	84	88

HI-VIS (D+N) FLYING JACKET

Classic Hi-Vis jacket

6DN FJ UNISEX

FABRIC

- 100% Polyester 300 D with PU coating

FEATURES

- Quilted lining with polyfill for added warmth
- Waterproof rating 20,000mm with sealed seams
- JB's reflective tape stands up to 50 times domestic wash
- Sleeve pocket with pen insert, two front pockets and one internal pocket
- Chunky knitted rib collar and cuffs
- ID pocket at chest
- Nylon zipper
- Complies with Standards AS/NZS 1906.4:2010 and AS/NZS 4602.1:2011 Day & Night



ORANGE/NAVY

LIME/NAVY

ADULTS SIZES	2XS	XS	S	M	L	XL	2XL	3XL	4XL	5XL	6/7XL
CHEST CM	54.5	57	59.5	62	64.5	67	69.5	72	74.5	77	79.5
CB LENGTH CM	66	68	70	72	74	76	78	80	82	84	88

HI-VIS 4-IN-1 WATERPROOF JACKET



ZJ453 UNISEX

FABRIC

- 100% Oxford Bonded Polyester Softshell
- 330 gsm

FEATURES

- Sleeves zip off to create vest
- Stretch fabric to increase comfort and freedom of movement
- Bio Motion segmented tape for increased comfort and movement
- Zip off hood
- 20,000mm Water resistant rating
- Unique bonded fleece lining pattern
- Longer tail to protect you from the elements
- Cuff adjusters
- Two front hip pockets with zips and covers to keep your items safe and dry
- One chest mobile phone pocket

SIZES	XXS	XS	S	M	L	XL	2XL	3XL	4XL	5XL	6XL
TO FIT CHEST(CM)	87	92	97	102	107	112	117	122	128	145	160
LADIES SIZES	8	10	12	14	16	18	20	22	24		
HALF CHEST	35	37	39	41	43	46	48	50	52		

KIMBERLEY LIGHTWEIGHT HI-VIS RAIN JACKET

MJ206 UNISEX

DISCRIPTION

- 2 toned Hi-Vis Waterproof Rain Jacket with detachable water proof hood.
- Heat Seam Sealed Oxford Waterproof shell and lightweight mesh lining with storm cuff.
- Plastic zip closure with reinforced button snap closure.

FABRIC

- Shell Fabric : 100% Polyester, 150D Oxford weave, PU coated 130g
- Lining Fabric : 100% Polyester Mesh 60g

FEATURES

- 50+ UPF rated fabric to block 98% of UV rays
- Wind resistant fabric to protect against wind chill
- Taped seams to provide additional protection
- Two-way zip for quick and easy access
- Increased breathability with a vented back yoke
- Waterproof keeping the wearer dry and protected from the elements



MANS SIZES	XXS	XS	S	M	L	XL	2XL	3XL	4XL	5XL	6XL
TO FIT CHEST(CM)	87	92	97	102	107	112	117	122	135	145	160
LADIES SIZES	8	10	12	14	16	18	20	22	24		
HALF CHEST	35	37	39	41	43	46	48	50	52		

MENS HI-VIS 4-IN-1 WATERPROOF JACKET



ZJ532 UNISEX

FABRIC

- 100% 300D Oxford Polyester
- Jacket Lining - 70 gsm
- Brushed Polar Fleece - 340 gsm

FEATURES

- Waterproof and fully seam sealed
- Waterproof rating 10,000mm
- Breathability rating 2,000mm
- Reversible vest zips into jacket and can be worn separately or combined
- Vest with warm fleece lining
- Concealed hood with unique clear panels to increase peripheral vision while wearing hood
- Storm flap with chin guard for comfort
- Two waist pockets with zip closure
- Reversible vest with two waist pockets
- Mobile phone pocket
- Embroidery access on vest and jacket
- Clear ID holder on chest
- Quick close tape adjustable cuff fasteners

SIZE	XXS	XS	S	M	L	XL	2XL	3XL	4XL	5XL	7XL
TO FIT NECK	36	38	40	42	44	46	48	50	53	56	60
TO FIT CHEST	87	92	97	102	107	112	117	122	135	145	160

ESSENTIAL 5-IN-1 TWO-TONE JACKET

S766 UNISEX

FABRIC

- Shell Fabric: 100% Polyester, 300D Oxford Weave with a Stain Resistant finish, Double PU Coated 190g
- Lining Fabric: 100% Polyester Mesh 60g
- Additional lining Fabric Info:
- Outer Jacket: 100% Polyester Mesh 60g
- Inner Jacket: 100% Polyester Fleece 280g
- Removeable Lining : 100% Polyester Fleece 280g

FEATURES

- 40+ UPF rated fabric to block 98% of UV rays
- Interactive inner jacket
- Premium reflective tape for increased visibility
- 50+ UPF rated fabric to block 98% of UV rays
- Certified to EN ISO 20471 after 50x washes
- Concealed mobile phone pocket
- Two-way zip for quick and easy access
- Bio motion tape pattern to improve recognition of human shape at distance
- Contrast panels for protection against dirt
- Stud adjustable cuffs for a secure fit
- 7 pockets for ample storage
- Detachable inner jacket for added versatility in all weather conditions
- Extremely water resistant fabric finish, water beads away from fabric surface
- Waterproof with taped seams to prevent water penetration



MANS SIZES	XXS	XS	S	M	L	XL	2XL	3XL	4XL	5XL	6XL
TO FIT CHEST(CM)	87	92	97	102	107	112	117	122	135	145	160
LADIES SIZES	8	10	12	14	16	18	20	22	24		
HALF CHEST	35	37	39	41	43	46	48	50	52		

HUSKI VENTURE 4-IN-1 JACKET

K8106 UNISEX

FABRIC

- Shell: 100% Polyester, 300D Oxford Weave with Breathetec PU Coating 185g
- Lining: 100% Polyester 85g
- Inner Jacket: 100% Polyester Quilted 265g
- Removeable lining: 100% Polyester Quilted 265g

FEATURES

- Interactive inner jacket
- 50+ UPF rated fabric to block 98% of UV rays
- Wind resistant fabric to protect against wind chill
- Taped seams to provide additional protection
- Print access for corporate branding
- Pack away hood for added functionality
- 10 pockets for ample storage
- Card holder for ID card display
- Two-way zip for quick and easy access
- Touch tape cuffs for a secure fit
- Bio motion tape pattern to improve recognition of human shape at distance
- This product is highly versatile and can be worn in a number of different ways
- Breathable fabric to draw moisture away from the body keeping the wearer cool, dry and comfortable
- Waterproof keeping the wearer dry and protected from the elements



YELLOW.NAVY

ORANGE.NAVY

MAENS SIZES	XXS	X8	S	M	L	XL	2XL	3XL	4XL	5XL	6XL
TO FIT CHEST(CM)	87	92	97	102	107	112	117	122	135	145	160
LADIES SIZES	8	10	12	14	16	18	20	22	24		
HALF CHEST	35	37	39	41	43	45	48	50	52		

HI-VIS (D+N) VISIONARY JACKET

6DNCJ UNISEX

FABRIC

- 300D Polyester Oxford shell fabric with PU Coating
- Waterproof rating 20,000mm with sealed seam
- 100% Polyester microfleece body lining
- 100% Polyester taffeta lining on sleeve

FEATURES

- Urban fit
- Reflective tape on body and sleeve
- Concealed hood inside collar, hood has clear panel for extra visibility
- Wind flap with hook pile closure
- ID patch pocket at right hand chest, tab on left hand chest
- Internal zipper opening for embroidery access
- 2 front patch pocket
- Hook pile tape tab on sleeve for secure fit
- Complies with AS/NZS 1906.4:2010 and AS/NZS 4602.1:2011 Day and Night



YELLOW.NAVY



ORANGE.NAVY

SIZES	XS	S	M	L	XL	2XL	3XL	4XL	5XL
FITS CHESTT (CM)	57	59.5	62	64.5	67	69.5	72	74.5	77
CB LENGTH (CM)	81	83	85	87	89	91	92	93	94



HI-VIS (D+N) REVERSIBLE VEST

6D4RV UNISEX

FABRIC

- Shell: 100% Polyester Oxford 300d with PU coating
- Lining: 290 gsm polar fleece contrast colour

FEATURES

- Waterproof rating 20,000mm with sealed seams
- JB's reflective tape stands up to 50 times domestic wash
- Complies with Standards AS/NZS 1906.4:2010 and AS/NZS 4602.1:2011 Day and Night
- Front pockets
- Embroidery access at inner bottom hem with hook pile tape closure
- Zips into 6DNLL Hi Vis (D+N) Long Line Jacket
- 2XS & XS available in all colours except Orange/Black
- URBAN FIT



ADULTS SIZES	2XS	XS	S	M	L	XL	2XL	3XL	4XL	5XL
CHEST CM	55	57.5	60	62.5	65	67.5	70	72.5	75	77.5
CB LENGTH CM	65	66.5	68.5	70.5	72.5	74.5	76.5	78.5	80.5	82.5



HI-VIS SOFTSHELL VEST

ZV426 UNISEX

FABRIC

- 100% Softshell with Bonded Fleece Backing
- 310 gsm

FEATURES

- Clear ID Pocket on Chest
- Two covered side hip pockets to keep all of items safe
- Longer tail for added protection from the elements



SIZE	XXS	XS	S	M	L	XL	2XL	3XL	4XL	5XL	7XL
TO FIT NECK (CM)	36	38	40	42	44	46	48	50	53	56	60
TO FIT CHEST (CM)	87	92	97	102	107	112	117	122	135	145	160



HUSKI REVERSIBLE POLAR FLEECE TRAFFIC VEST

K8132 UNISEX

FABRIC

- Shell: 100% Polyester 300D Oxford Weave, PU Coated 185g
- 100% Polyester Micro Polar Fleece 288g

FEATURES

- High visibility reversible vest with premium reflective tape, waterproof fabric & longer hem at the back.
- Taped seams to provide additional protection
- Wind resistant fabric to protect against wind chill
- Card holder for ID card display
- 6 pockets for ample storage
- Fleece lining for added warmth and comfort
- Reversible garment for multi use
- Waterproof keeping the wearer dry and protected from the elements



ADULTS SIZES	2XS	XS	S	M	L	XL	2XL	3XL	4XL	5XL
CHEST CM	55	57.5	60	62.5	65	67.5	70	72.5	75	77.5
CB LENGTH CM	65	66.5	68.5	70.5	72.5	74.5	76.5	78.5	80.5	82.5

BAD® WATERPROOF HI-VIS REVERSIBLE VEST WITH 3M TAPE

FABRIC

- 5000mm Waterproof, Breathable 3000 MVP shell fabric will keep you dry and sweat free even through heavy rain.

FEATURES

- 3M™ Scotchlite™ 8906 brand reflective tape in "Hoop" pattern.
- Plush micro polar fleece on reverse side for warmth.
- Stress point bar-tacking for extra strength.
- Fully seam sealed.
- Reversible. Can be worn inside out when you do not need to be in hi-vis.
- Hand pockets (on both sides) for warmth and storage.
- UPF50+ Excellent Protection.
- Complies with Standards AS/NZS 1906.4:2010 and AS/NZS 4602.1:2011 Day and Night



MANS SIZES	XS	S	M	L	XL	2XL	3XL
TO FIT CHEST(CM)	87	92	97	102	107	112	117
TO FIT CHEST(INCH)	34	36	38	40	42	44	46

HI-VIS (D+N) SAFETY VEST

6DNSV UNISEX

FABRIC

- 100% Polyester tricot for durability

FEATURES

- Complies with Standards AS/NZS 1906.4:2010 and AS/NZS 4602.1:2011 Day and Night
- Reflective tape
- Front flap with Hook-Pile Tape closure
- Contrast grey binding



FLUORO YELLOW



FLUORO ORANGE



SIZE	2XS	XS	S	M	L	XL	2XL	3XL	4XL	5XL	6/7XL
FITS CHEST(CM)	51	53.5	56	59	62	65	68	71	74	77	83
CB LENGTH (CM)	68	68	70	70	72	72	74	74	76	76	78

HI-VIS (D+N) ZIP SAFETY VEST

Hi-Vis safety vest, cut to a classic fit and complete with ID plastic patch

6DNSZ UNISEX

FABRIC

- 120gsm Tricot
- 100% Polyester

FEATURES

- Self-fabric binding
- Utility pockets at sides
- Front zip closure
- Complies with AS/NZS 1906.4: 2010 and AS/NZS 4602.1:2011 Day & Night



FLUORO YELLOW



FLUORO ORANGE



SIZE	2XS	XS	S	M	L	XL	2XL	3XL	4XL	5XL	6/7XL
FITS CHEST(CM)	51	53.5	56	59	62	65	68	71	74	77	83
CB LENGTH (CM)	68	68	70	70	72	72	74	74	76	76	78



RIPSTOP STRETCH WORK SHORTS

WP25 UNISEX

FABRIC

- Rip Stop Blended Stretch Woven fabric. 65% Poly/33% Cotton/2% Spandex - 240gsm

FEATURES

- Rip Stop stretch fabric with 4way stretch panels
- Ribbed flexi waistband with draw strings
- Multiple load bearing pockets
- Rip Stop weave prevents tearing and ripping
- Stitch reinforcement at major seams
- UV Rating - (UPF 50+) AS/NZS4399:2017
- Modern design, slim legs



MODERN FIT	72	77	82	87	92	97	102	107	112	117	122	127
LADIES REF	8	10	12	14	16	18	20	22	24	26	28	30
WAIST	72	77	82	87	92	97	102	107	112	117	122	127



MENS CARGO WORK PANT

Mens stretch cargo work pants with design panel treatment

WP22

FABRIC

- Composition : 97% Cotton / 3% Spandex
- Weight : 265gsm
- Wash : Easy Care

FEATURES

- Tough stretch fabric
- Strong stitch reinforcement
- Comfortable slimmer work fit
- Multiple functional tabs & pocketing
- Contrast paneling and piping
- Unique design stitch treatments
- Added side stretch waist for extra comfort
- Adjustable stretch at ankle.



EASY FIT	72R	77R	82R	87R	92R	97R	102R	107R	112R	117R	122R	127R
WAIST	72	77	82	87	92	97	102	107	112	117	122	127
CB INLEG LENGTH)	78	79	80	81	81	81	81	81	81	81	81	81

MENS WHITE SAFETY SHIRTS

WT09HV UNISEX

FABRIC

- 100% Cotton Drill
- 190gsm

FEATURES

- Two button-down chest pockets with mitered corners
- Left chest pocket with pen division
- 3M Scotchlite reflective tapes with X Back Biomotion configuration
- Excellent UV protection with UPF rating 50+
- Conforms to AS/NZS 4602.1:2011 Class N
- Night safety wear

WT09HV MENS EASY FIT	XS	S	M	L	XL	2XL	3XL	5XL	7XL
GARMENT 1/2 CHEST (CM)	54	57	60	63	66	69	72	78	84



MENS WHITE SAFETY PANTS

WP18HV UNISEX

FABRIC

- 100% cotton drill
- 280gsm

FEATURES

- Organiser pockets on legs
- Excellent UV protection with UPF rating 50+
- All stress points bar-tacked
- Hard wearing
- Doublehooped 3M ScotchliteTM reflective tapes for night visibility
- Conforms to AS/NZS 4602.1:2011 Class N
- Night safety wear

WP18HV MENS EASY FIT	72R	77R	82R	87R	92R	97R	102R	107R	112R	117R	122R	127R
TO FIT HIP (CM)	95	100	105	110	115	120	125	130	135	140	145	150
TO FIT WAIST (CM)	72	77	82	87	92	97	102	107	112	117	122	127



REGULAR WEIGHT COMBINATION COVERALLS WITH TAPE

MA931 UNISEX

FABRIC

- 100% Cotton Drill
- 310gsm

FEATURES

- 50+ UPF rated fabric to block 98% of UV rays
- Concealed stud front for easy access
- Contrast panels for protection against dirt
- Premium reflective tape for increased visibility
- Deep storage pockets
- Reinforced seams for extra durability and strength
- 8 pockets for ample storage
- 100% Cotton fabric for added comfort and breathability
- Large back pockets
- AS/NZS 4602.1:2011 Class D/N



SIZE	77R	82R	87R	92R	97R	102R	107R	112R
TO FIT 1/2 CHEST (CM)	54	56	58	60	62	64	66	68
TO FIT WAIST (CM)	43	45	47	49	51	53	55	57
INLEG (CM)	77	79	81	83	85	87	89	91

REGULAR WEIGHT COMBINATION COVERALLS

MW931 UNISEX

FABRIC

- 100% Cotton Drill
- 310gsm

FEATURES

- 50+ UPF rated fabric to block 98% of UV rays
- Stud front opening for easy access
- Concealed stud front for easy access
- Contrast panels for protection against dirt
- Deep storage pockets
- Reinforced seams for extra durability and strength
- 8 pockets for ample storage
- 100% Cotton fabric for added comfort and breathability
- Large back pockets
- AS/NZS 4602.1:2011 Class D/N



SIZE	77R	82R	87R	92R	97R	102R	107R	112R
TO FIT 1/2 CHEST (CM)	54	56	58	60	62	64	66	68
TO FIT WAIST (CM)	43	45	47	49	51	53	55	57
INLEG (CM)	77	79	81	83	85	87	89	91



ENDURANCE PLUS HELMET

PS54 UNISEX

DISCRIPTION

- Endurance unvented ABS shell helmet with 6-point textile suspension harness and wheel ratchet size adjustment.
- Sold with 4-point chin strap included.

FEATURES

- Compatible with PS58 helmet visor holder
- Up to 7 years lifetime from manufacturing date (as long as undamaged)
- Compatible with PW47 and PS47 clip-on ear muff
- Chin strap included
- Wheel ratchet size adjustment for easy fitting
- 6-point textile suspension harness for enhanced wearer comfort and safety
- ABS shell with extended peak to minimise glare
- Unvented helmet shell for safe use with electrical applications

MATERIALS

- ABS



YELLOW

WHITE

ROYAL BLUE

ORANGE



LED HEAD LIGHT USB RECHARGEABLE BEANIE

B029 UNISEX

This warm and comfortable acrylic beanie hat features a removable LED front light for superior visibility in low light conditions. The rechargeable LED can be charged in a USB port.

FABRIC

- 100% Acrylic, Knit

FEATURES

- Brightness 150 lumens
- Run time 2/4 hours
- USB rechargeable battery included
- Function high-medium-flash
- Beam Distance 10m (high), 5m (medium)
- 9 gauge liner for dexterity
- Retail tag which aids presentation for retail sales
- CE certified



BLACK

NAVY

ORANGE

YELLOW



ENDURANCE HELMET

PS55 UNISEX

DISCRIPTION

- Endurance vented ABS shell helmet with 6-point textile suspension harness and wheel ratchet size adjustment.
- Sold with 4-point chin strap included.

FEATURES

- Compatible with PS58 helmet visor holder
- Up to 7 years lifetime from manufacturing date (as long as undamaged)
- Compatible with PW47 and PS47 clip-on ear muff
- Chin strap included
- Wheel ratchet size adjustment for easy fitting
- 6-point textile suspension harness for enhanced wearer comfort and safety
- ABS shell with extended peak to minimise glare
- Unvented helmet shell for safe use with electrical applications

MATERIALS

- ABS



YELLOW

WHITE

ROYAL BLUE

ORANGE



THINSULATED CUFF BEANIE

CH23 UNISEX

FABRIC

- 100% Acrylic Outer
- 65% Polyolefin / 35% Polyester for inner insulation

FEATURES

- 3M Thinsulate insulation folded with reflective stripe



BLACK

NAVY

FLUORO ORANGE

FLUORO YELLOW

RAIL | ROAD | ENERGY





COOLDRY® SEGMENTED S/S POLO

SW85 UNISEX

FABRIC

- 160gsm
- CoolDry® mesh, 100% Polyester

FEATURES

- Micromesh fabric with moisture wicking management
- Minimizes odour
- Matching colour buttons
- Rib knit collar with contrast trims
- Left-hand side external chest pocket with pen partition
- Segmented reflective tapes to add flexibility & comfort
- Conforms to AS/NZS 4602.1:2011 Class D/N, day & night use safety wear
- UPF 30+



YELLOW.NAVY



ORANGE.NAVY

MENS SIZE	2XS	XS	S	M	L	XL	2XL	3XL	5XL	7XL
HALF CHEST	47	50	53.5	56	58.5	61	63.5	66	71	76
LADIES SIZES	8/10	12	14	16	18	20	22	24	26	28/30
HALF CHEST	47	50	53.5	56	58.5	61	63.5	66	71	76



COOLDRY® SEGMENTED L/S POLO

SW86 UNISEX

FABRIC

- 160gsm
- CoolDry® mesh, 100% Polyester

FEATURES

- Micromesh fabric with moisture wicking management
- Minimizes odour
- Matching colour buttons
- Rib knit collar with contrast trims
- Left-hand side external chest pocket with pen partition
- Segmented reflective tapes to add flexibility & comfort
- Conforms to AS/NZS 4602.1:2011 Class D/N, day & night use safety wear
- UPF 30+



YELLOW.NAVY



ORANGE.NAVY

MENS SIZE	2XS	XS	S	M	L	XL	2XL	3XL	5XL	7XL
HALF CHEST	47	50	53.5	56	58.5	61	63.5	66	71	76
LADIES SIZES	8/10	12	14	16	18	20	22	24	26	28/30
HALF CHEST	47	50	53.5	56	58.5	61	63.5	66	71	76



HI-VIS REGULAR WEIGHT L/S SHIRT WITH TAPE OVER SHOULDER

MS191 UNISEX

FABRIC

- 100% Cotton Drill 185g

DESCRIPTION

- Full Hi-Vis Preshrunk 100% cotton RegulWeight Long or Short Sleeve DrillShirt with tape.
- Double breasted pockets with pen division Plastic Button Closure and Gusset Sleeves.

FEATURES

- 2 pockets for secure storage
- 100% Cotton fabric for added comfort and breathability
- Gusset sleeves for added safety
- Button placket opening
- Premium reflective tape for increased visibility
- 50+ UPF rated fabric to block 98% of UV rays



ORANGE

YELLOW

SIZE	2XS	XS	S	M	L	XL	2XL	3XL	5XL	7XL
LADIES REF	8	10	12	14	16	18	20	22	24/26	28/30
CHEST	51	54	57.5	60	62.5	65	67.5	70	75	80

MENS BIOMOTION VIC RAIL SHIRT

ZW680

FABRIC

- 100% Cotton Twill
- 100% Cotton

FEATURES

- 150 gsm lightweight cotton twill to keep you cool
- Vic rail compliant tape configuration and orange shade
- Bio motion arm taping for improved recognition of human shape at a distance
- Underarm and upper back mesh vent inserts to keep you cool in any environment
- Two chest pockets with button closures and pen partition
- Fade tested



FRONT



BACK

ADULTS	3XS	2XS	XS	S	M	L	XL	2XL	3XL	4XL	5XL
HALF CHEST	46	48	50	52	54	56.25	58.75	61.75	66.5	71	76
CB LENGTH	75	76	76	78	80	82	83	84	85	86	87
COLLOR	32	34	36	38	40	41.5	43	45	47	49	51



MENS HI-VIS X-BACK TAPED SHIRT



ZW690

FABRIC

- 100% Cotton Twill
- 160 gsm

FEATURES

- 160 gsm mid weight Cotton twill to keep you cool while still being tough enough for any job
- Underarm and upper back mesh vent inserts to keep you cool in any environment
- Bio Motion tape configuration to improve recognition of human shape at distance
- NSW-rail compliant X back taping configuration
- Two chest pockets with button closures and pen partition



FRONT



BACK

ADULTS	3XS	2XS	XS	S	M	L	XL	2XL	3XL	4XL	5XL
HALF CHEST	46	48	50	52	54	56.25	58.75	61.75	66.5	71	76
CB LENGTH	75	76	76	78	80	82	83	84	85	86	87
COLLOR	32	34	36	38	40	41.5	43	45	47	49	51

SHIRT L/S HI-VIS D/N VIC RAIL SHIRT 3M TAPED

7WM420

FABRIC

- Lightweight 100% pre-shrunk 155gsm Cotton Drill

APPLICATIONS/INDUSTRIES

- Suitable for Vic-Rail, building and construction, forestry, manufacturing, mining, transport & storage, logistics and ware houses, communication, exploration and field operations

FEATURES

- Hi-Vis Class D/N (day or night use), 3M 8912 premium reflective tape - hoop pattern around body, arms and over shoulders (60 wash cycles)
- Biomotion protection – additional reflective tape fitted to arms
- Breathable mesh vents in back and under arms
- Twin button flap pockets
- Adjustable cuffs



Breathable mesh vent in back



Breathable mesh vents under arms



EASY FI	S	M	L	XL	2XL	3XL	4XL	5XL	6XL
TO FIT CHEST(CM)	90-95	95-100	100-105	105-110	110-115	115-120	120-125	125-130	130-135



VIC-RAIL LIGHTWEIGHT SHIRT

SW55 UNISEX

FABRIC

- 150gsm Lightweight Drill
- 100% Cotton



FRONT



BACK

FEATURES

- Pre-shrunk
- Wide back neck yoke with concealed mesh
- Cooling gussets at underarms
- Button down flap pockets and pen partition
- Adjustable cuffs
- Bio Motion perforated reflective tape
- VIC-Rail approved - Class "D/N" day & night use AS/NZS 402.1:2011
- UV Rating (UPF 50+) AS/NZS 4399:2017

LADIES SIZES	8	10	12	14	16	18	20	22	24/26	28/30
EASY FIT	2XS	XS	S	M	L	XL	2XL	3XL	5XL	7XL
HALF CHEST	51	54	57	60	63	66	69	72	78	84
BODY LENGTH	74/77	76/79	78/81	79/82	80/83	82/85	84/87	86/89	87/90	88/91



HI-VIS SAFETY JUMPER

SW32 UNISEX

FABRIC

- 320gsm low pill Brushed Fleece
- 80% Polyester / 20% Cotton

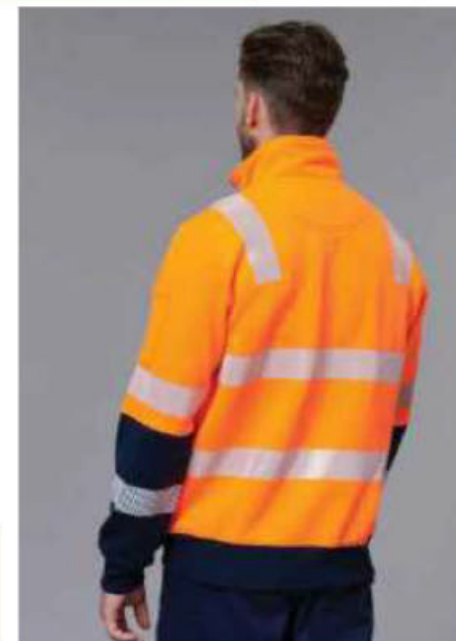
FEATURES

- Half zip closure
- Two side hand pockets with zips
- Two pen pockets on the left sleeve
- Ribbed elastic cuff and waist
- Segmented reflective tapes in Bio Motion configuration for added comfort and visibility, allows flexibility in the fabric
- UV rating (UPF 50+) AS/NZS 4399:2017, Day/Night AS/NZS 4602.1:2011



ORANGE/NAVY YELLOW/CHARCOAL YELLOW/NAVY

SIZE	2XS	XS	S	M	L	XL	2XL	3XL	5XL	7XL
LADIES REF	8	10	12	14	16	18	20	22	24/26	28/30
CHEST	51	54	57.5	60	62.5	65	67.5	70	75	80





WINDCHEATER L/S POLYESTER FLEECE JERSEY

7WFT035 UNISEX

FABRIC

- Heavy weight bonded polyester fleece 320gsm

FEATURES

- Hi-Vis Class D/N (day or night use), Vic Rail compliant
- ¼ zip with fold up collar
- Hand warmer pockets with zip
- Elasticised cuffs and waist band
- Pencil pocket on sleeve



FRONT

BACK

SIZE	2XS	XS	S	M	L	XL	2XL	3XL	5XL	7XL
LADIES REF	8	10	12	14	16	18	20	22	24/26	28/30
CHEST	51	54	57.5	60	62.5	65	67.5	70	75	80



VIC RAIL LIGHTWEIGHT SAFETY

SW40 UNISEX

FABRIC

- 120gsm Tricot
- 100% Polyester

FEATURES

- Zip front fastening for easy closure
- Left hand chest Notebook pocket with pen insert
- Extended tail flap for greater visibility
- Rail orange with silver reflective tape (50mm)
- Grey contrast binding
- Day/Night AS/NZS 4602.1:2011



FRONT



BACK

LADIES SIZES	8	10	12	14	16	18	20	22	24/26	28/30
EASY FIT	2XS	XS	S	M	L	XL	2XL	3XL	5XL	7XL
HALF CHEST	51	54	57	60	63	66	69	72	78	84
BODY LENGTH	74/77	76/79	78/81	79/82	80/83	82/85	84/87	86/89	87/90	88/91



Chest pocket with velcro closure and pencil partition



Back view

VEST MASTER PVT29 HI-VIS D/N TAPED POLYESTER ZIP FRONT

7PVT29 UNISEX

APPLICATIONS/INDUSTRIES

- Suitable for building and construction, forestry, manufacturing, mining, transport & storage, logistics and warehouses, communication, exploration and field operations

FEATURES

- Durable lightweight 100% Polyester fabric
- Hi-Vis Class D/N (day or night use) reflective tape, hoop pattern around body and over shoulders
- Chest pocket with Velcro closure and pencil partition
- Zip front closure
- Safety Orange VIC Rail Compliant
- AS/NZS 4602.1:2011 & AS/NZS 1906.4:2010

EASY FIT	S	M	L	XL	2XL	3XL	4XL	5XL	6XL
TO FIT CHEST(CM)	90-95	95-100	100-105	105-110	110-115	115-120	120-125	125-130	130-135



Chest pocket with flap and pencil partition



Mesh over shoulders



Elastic sides

VEST MASTER PVT41 VIC RAIL ELITE HI-VIS D/N TAPED POLYESTER ZIP FRONT

7PVT41 UNISEX

APPLICATIONS/INDUSTRIES

- Suitable for Vic Rail, building and construction, forestry, manufacturing, mining, transport & storage, logistics and warehouses, communication, exploration and field operations

FEATURES

- 100% Polyester fire retardant treated fabric
- Hi-Vis Class D/N (day or night use) 3M reflective tape, hoop pattern around body and over shoulders & additional tape across lower back - Vic Rail Compliant
- Zip front closure and elasticised sides
- Breathable mesh over shoulders & Extended tail
- Chest pocket with flap, Velcro closure and pencil partition
- ID pocket on chest and microphone holder loops
- AS/NZS 4602.1:2011 & AS/NZS

EASY FIT	S	M	L	XL	2XL	3XL	4XL	5XL	6XL
TO FIT CHEST(CM)	90-95	95-100	100-105	105-110	110-115	115-120	120-125	125-130	130-135



FRONT



BACK



REVERSIBLE VEST



ORANGE



LIME



REVERSIBLE VEST

VIC RAIL HI-VIS REVERSIBLE SAFETY VEST

SW76 UNISEX

FEATURES

- Bio Motion Reflective Tape
- Optional clear ID pocket to be sewn on right hand chest (extra charge)
- Zip front closure
- Two side angled pockets
- Extended tail flap for greater visibility
- Reflective tape
- Day/Night AS/NZS 4602.1:2011

FABRIC

- Fabric Outer: 180gsm - 100%Polyester, 300D Oxford PU Coated Waterproof
- Fabric Inner – 260gsm Polar Fleece

LADIES REF	8	10	12	14	16	18	20	22	24/26	28/30
EASY FIT	2XS	XS	S	M	L	XL	2XL	3XL	4XL	5XL
HALF CHEST	51	54	57	60	63	66	69	72	78	84
Body LENGTH	64/70	66/72	68/74	70/76	72/78	73/79	74/80	75/81	76/82	77/83

VEST MASTER VHT80 WINTERMATE REVERSIBLE HI-VIS D/N TWO-TONE POLY/PU SHELL

7WVHT80 UNISEX

FABRIC

- Polyester/PU shell with warm polar fleece lining

APPLICATIONS/INDUSTRIES

- Suitable for building and construction, forestry, manufacturing, mining, transport & storage, logistics and warehouses, communication, exploration and field operations.

FEATURES

- Polyester/PU shell with warm polar fleece lining
- Hi-Vis Class D/N (day or night use) Reflective tape - hoop pattern around body and over shoulders - Special Orange VIC Rail Compliant
- Zip front closure
- Reversible – Wear out as non-fluoro
- Wind and waterproof - sealed seams
- AS/NZS 4602.1:2011 & AS/NZS 1906.4:2010

EASY FIT	S	M	L	XL	2XL	3XL	4XL	5XL	6XL
TO FIT CHEST(CM)	90-95	95-100	100-105	105-110	110-115	115-120	120-125	125-130	130-135



WINDCHEATER L/S MASTER 'VIC RAIL' HI-VIS D/N TWO-TONE TAPED POLYESTER FLEECE JERSEY

ZJ780 UNISEX

FABRIC

- Heavy weight bonded polyester fleece 320gsm

FEATURES

- Hi-Vis Class D/N (day or night use), Vic Rail compliant
- ¼ zip with fold up collar
- Hand warmer pockets with zip
- Elasticised cuffs and waist band
- Pencil pocket on sleeve

LADIES SIZES	8	10	12	14	16	18	20	22	24
TO FIT CHEST	89	94	99	104	111	116	121	126	131
EASY FIT	2XS	XS	S	M	L	XL	2XL	3XL	4XL 5XL 7XL
TO FIT CHEST	87	92	97	102	107	112	117	122	135 145 160



VIC RAIL HI-VIS SAFETY JACKET

Waterproof oxford shell with mesh lining Jacket

SW75 UNISEX

FABRIC

- 180gsm - 100%Polyester, 300D Oxford PU Coated outer with Polyester Mesh inner lining,
- Breathability: 3000mm, Water Proof: 8000mm

FEATURES

- Bio Motion Reflective tape
- Optional clear ID pocket to be sewn on right hand chest (extra charge)
- Concealed Fold away hood and elasticized storm cuffs with Velcro fastening
- Pockets: 2 Velcro fastened lower pockets including integrated hand warmer pockets, internal chest pocket and mobile phone pocket on sleeve
- Day/Night AS/NZS 4602.1:2011

LADIES SIZES	8	10	12	14	16	18	20	22	24/26	28/30
EASY FIT	2XS	XS	S	M	L	XL	2XL	3XL	5XL	7XL
HALF CHEST	51	54	57	60	63	66	69	72	78	84
BODY LENGTH	74/77	76/79	78/81	79/82	80/83	82/85	84/87	85/89	87/90	88/91



VIC RAIL LIGHTWEIGHT SAFETY SHIRT

SW77 UNISEX

*SW77=SW75+SW76
SHOULD YOU BUY "3 IN 1" (SW77) OR "1" JACKET(SW75), OR "2" WAY VEST (SW76)*

FABRIC

- Outer: 180gsm - 100%Polyester, 300D Oxford PU Coated outer with Polyester Mesh inner lining
- Breathability: 3000mm, Water Proof: 8000mm
- Fabric Inner in the vest – 260gsm Polar Fleece

JACKET:

- Concealed Fold away hood and Elasticized storm cuffs with Velcro fastening.
- Pockets: 2 Velcro fastened lower pockets including integrated hand warmer pockets, internal chest pocket and mobile phone pocket on sleeve.

REVERSIBLE VEST:

- Zip front closure, Two side angled pockets.
- Extended tail flap for greater visibility.

EASY FIT	2XS	XS	S	M	L	XL	2XL	3XL	5XL	7XL
LADIES SIZE	8	10	12	14	16	18	20	22	24/26	28/30
HALF CHEST	51	54	57	60	63	66	69	72	78	84
BODY LENGTH	74/77	76/79	78/81	79/82	80/83	82/85	84/87	86/89	87/90	88/91



JACKET MASTER VIC RAIL 4-IN-1 HI-VIS D/N TAPED POLYESTER OXFORD

7WJHT68 UNISEX

FABRIC

- Outer jacket - Polyester/PU shell with Polyester Mesh liner
- Inner vest - Zip out reversible Polyester/PU shell with warm polar fleece lining

FEATURES

- Hi-Vis Class D/N (day or night use) Reflective tape - hoop pattern around body, arms and over shoulders
- Biomotion protection – additional reflective tape fitted to arms
- 2 way zip front closure with Velcro storm cover
- Wind and waterproof - sealed seams
- Concealed Fold away hood and Elasticated storm cuffs with Velcro fastening
- Pockets: 2 Velcro fastened lower pockets including integrated hand warmer pockets, internal chest pocket and mobile phone pocket on sleeve
- Vic Rail Compliant



EASY FIT	S	M	L	XL	2XL	3XL	4XL	5XL	6XL
TO FIT CHEST(CM)	50-95	95-100	100-105	105-110	110-115	115-120	120-125	125-130	130-135

VIC ROAD ZIP OFF SLEEVE LONGLINE JACKET



6DVRL UNISEX

FABRIC

- 100% Polyester 300 D with PU coating

FEATURES

- Polar fleece body and collar lining for warmth
- Waterproof rating 20,000mm, fully sealed seams
- Taffeta sleeve lining
- Long line styling
- Concealed hood inside collar
- Wind flaps with Hook – Pile tape closure
- Chest ID pocket
- Double cuff sleeve opening with elasticized inner, hook pile tape closure
- Embroidery zipper
- Zip off sleeves
- Complies to AZ/NZS 1906.4 :2010, garment comply to AZ/NZS 4602.1:2011 Day and Night

ADULTS SIZES	2XS	XS	S	M	L	XL	2XL	3XL	4XL
CHEST CM	57.5	60	62.5	65	67	70	72.5	75	77.5
CB LENGTH CM	82	84	86	88	90	92	94	95	96



VIC ROAD SAFETY VEST

Be noticed in this Vic Road orange / yellow reflective tape vest



6DVRV UNISEX

FABRIC

- 100% polyester tricot for durability

FEATURES

- Front zip closure
- Vic Road Orange with Yellow Reflective tape
- Additional yellow tape at back tail for enhanced visibility
- Contrast binding
- Complies with AS/NZS 1906.4:2010
- Complies with AS/NZS 4602.1:2011 Day & Night

ADULTS SIZES	S	M	L	XL	2XL	3XL	4XL	5XL	6/7XL
CHEST CM	59	62	65	68	71	74	77	80	86
SP LENGTH CM	69	71	71	73	73	75	75	77	79



JACKET MASTER TEMPEST 4-IN-1 HI-VIS D/N TAPED TWO-TONE POLYESTER OXFORD

7WJHT69 UNISEX

FABRIC

- Outer Jacket - Polyester/PU shell with Polyester mesh liner
- Inner vest - Zip out reversible Polyester/PU shell with warm polar fleece lining

FEATURES

- 2-Tone front, arms and full Hi-Vis back
- Hi-Vis Class D/N (day or night use) Reflective tape - Orange/ Navy is VIC Rail Compliant, hoop pattern around body, arms and over shoulders. Biomotion protection, additional reflective tape fitted to arms ¾ length.
- 2 way zip front closure with Velcro storm cover. Elasticated storm cuffs with Velcro fastening
- Wind and waterproof
- Pockets: 2 Velcro fastened lower pockets including integrated hand warmer pockets, internal chest pocket and mobile phone pocket on sleeve.
- Complies with AS/NZS 4602.1:2011 & AS/NZS 1906.4:2010



LIME

ORANGE

EASY FIT	S	M	L	XL	2XL	3XL	4XL	5XL	6XL
TO FIT CHEST(CM)	90-95	95-100	100-105	105-110	110-115	115-120	120-125	125-180	180-185



HUSKI ROADS 2-IN-1 JACKET

K8155 UNISEX

FABRIC :

- SHELL : 100% Polyester, 300D Oxford weave with Breathetec PU Coating 185g
- LINING : 65% Polyester, 35% Cotton 175g

FEATURES

- Waterproof keeping the wearer dry and protected from the elements
- Breathable fabric to draw moisture away from the body keeping the wearer cool, dry and comfortable
- High intensity micro prism reflective tape
- Zip out sleeves for multi use
- Touch tape cuffs for a secure fit
- 6 pockets for ample storage
- Phone and pen holder pocket
- Pack away hood for added functionality
- Taped seams to provide additional protection
- Wind resistant fabric to protect against wind chill
- 50+ UPF rated fabric to block 98% of UV rays

STANDARDS

- AS 4602.1 Class D/N
- AS/NZS 1906.4:2010
- VIC Rail / AS 7471 Australian Rail Standard
- AS 4399 UPF 50+



EASY FIT	2XS	XS	S	M	L	XL	2XL	3XL	5XL	7XL
LADIES SIZES	8	10	12	14	16	18	20	22	24/26	28/30
HALF CHEST	51	54	57	60	63	66	69	72	78	84
BODY LENGTH	74/77	76/79	78/81	79/82	80/83	82/85	84/87	86/89	87/90	88/91



RIGHTSIDE
POCKET



LEFTSIDE
POCKET



BACK

MENS LEGENDS CARGO PANT

Y02202 MENS

FABRIC

- 340gsm, 100% cotton Panama weave with silicone wash

FEATURES

- Articulated fit for comfort & freedom of movement
- Cordura reinforcement on key abrasion zones such as knees and pockets
- Triple stitched for added strength
- Multiple storage pockets



NAVY



KHAKI



CHARCOAL



GREEN



BLACK

SIZES	77R	82R	87R	92R	97R	102R	107R	112R	117R
FIT WAIST(IN)	30	32	34	36	38	40	42	44	46
IN LEG SEAM(CM)	83	83	83	83	83	83	83	83	83

JPANTS MASTER M015T MAXI MD HI-VIS N-TAPED 265GSM COTTON DRILL

7WM015T UNISEX

FABRIC

- Medium weight 265gsm pre-shrunk Cotton Drill

FEATURES

- Hi-Vis 3M 8912 premium reflective tape, hoop pattern above & below knee (60 wash cycles), Biomotion protection – additional reflective tape fitted to legs
- Flat front with heavy duty belt loops
- Cargo pocket Left Hand Side
- 2 back pockets (1 with flap)
- Metal stud button
- Mobile phone and integrated ruler pocket

APPLICATIONS/INDUSTRIES

- Suitable for agriculture, building and construction, forestry, manufacturing, mining, transport & storage, logistics and warehouses, communication, exploration and field operations



2 x Rear Pockets



Ruler/Mobile pocket

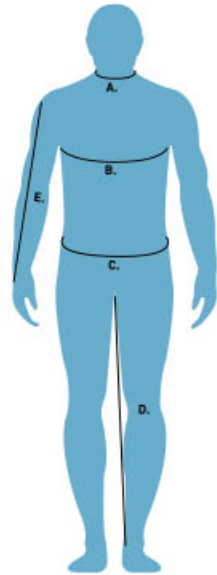


Cargo Pocket

EASY FIT	77R	82R	87R	92R	97R	102R	107R	112R	117R	122R	127R
WAIST	77	82	87	82	97	102	107	112	117	122	127
CB IN LEG LENGTH	79	80	81	81	81	81	81	81	81	81	81

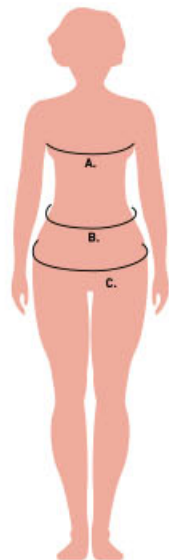
BODY AND GARMENT SIZE GUIDES

Fitting Guide for Men



- A. NECK**
The measurement is taken around the neck, at the collar level.
- B. CHEST**
The measurement is taken around the fullest part of the upper chest, keeping the tape under the arms and around the shoulder blades.
- C. WAIST**
The measurement is taken around the waist, keeping one finger between the tape and the body, for a comfortable fit.
- D. INSEAM**
Measure from the top of the inner pant leg seam (the crotch) to the opening at the bottom of the pant leg.
- E. SLEEVE**
Measure the length from the top stitching on the shoulder to the bottom of the wrist. Be careful not to measure too high above the wrist.

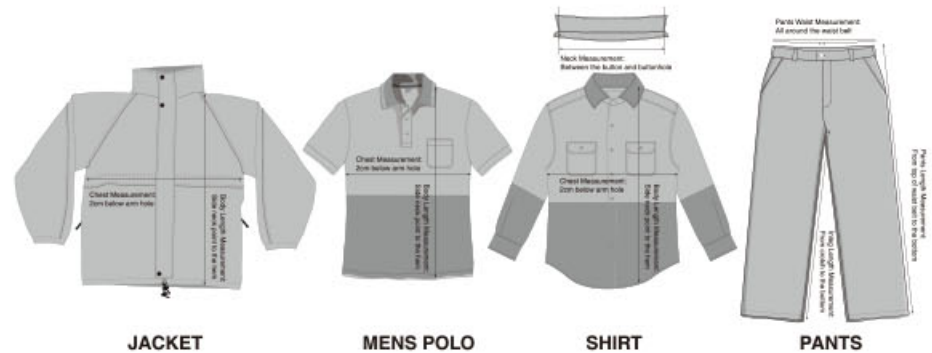
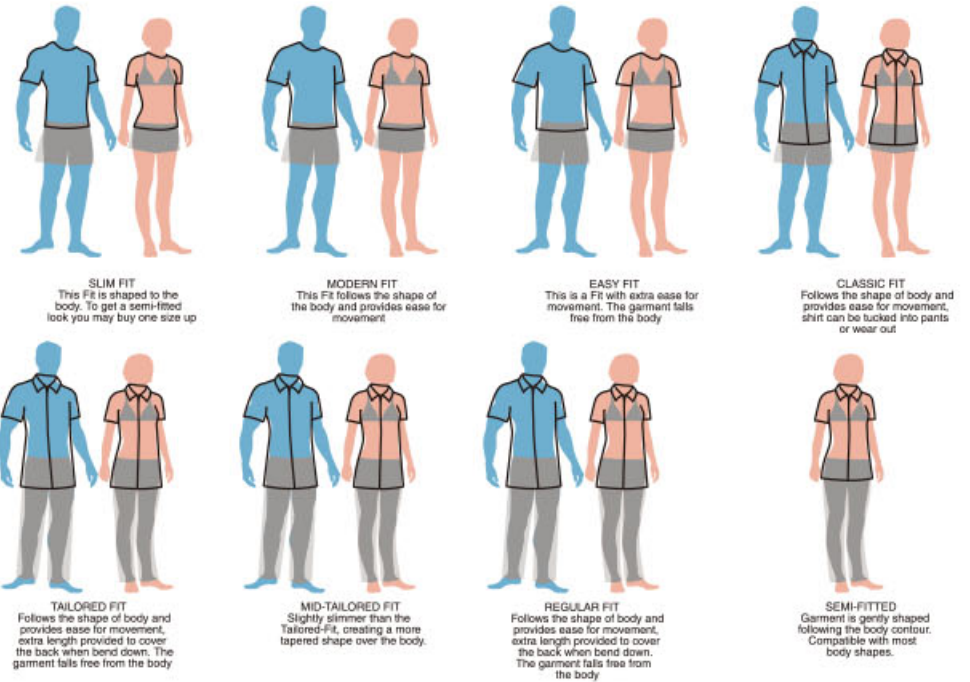
Fitting Guide for Women



- A. BUST**
The measurement is taken around the fullest part of the bust, keeping the tape under the arms and around the shoulder blades.
- B. WAIST**
The measurement is taken around the waist, keeping one finger between the tape and the body, for a comfortable fit.
- C. HIPS**
The measurement is taken around the fullest part of the hips, while standing naturally (approximately 22 cm down from the waist).

FIND YOUR BEST SIZE FIT

FINDING A FIT THAT SUITS YOUR BODY IS VERY IMPORTANT. IT NOT ONLY HELPS IN COMFORT BUT ALSO MAKES YOU LOOK GREAT. USE BELOW CHART TO CHOOSE THE CORRECT FIT THAT SUITS YOUR STYLE OR FLATTER YOUR BODY SHAPE.



Please note: Our factories use the most modern and sophisticated machinery to ensure a perfect make and look for all our garments each time. Whilst all effort is made to achieve the exact standards for all our garments each time but it's because of the human content in the manufacturing process that sometime a garment may have a slight sizing variability. We are confident in bringing this range to you and know that the high quality of our products will continue to impress. Specification measurements in this catalogue relate to the garment dimensions and not body measurements.

GoodMaker For

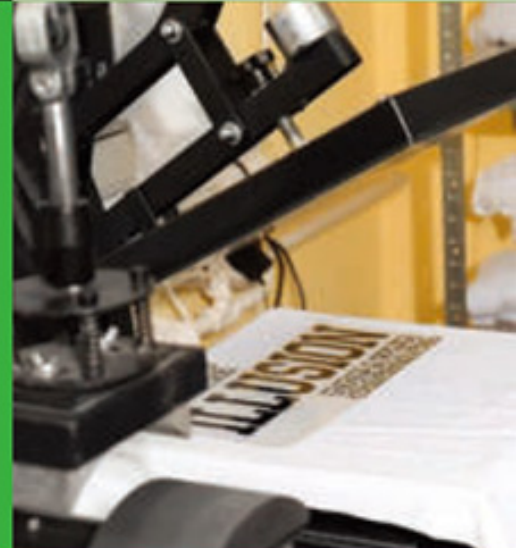
EMBROIDERY

Embroideries are performed with high speed computerised machinery nowadays, which is resourceful and provides outstanding quality that usually allows a longer life span than the garment itself. Embroidery as an optimal inprint option offers a distinctive appearance and can be embroidered on vast range of clothing and apparels, including knitweares, towels, bags, hats, scarves, etc.



DIGITAL TRANSFER PRINTING

Danzo's latest commercial equipments offer high resolution images of digital transfer printing of logo / artwork accomplished by heat-pressing specialty single / full-coloured prints onto most garments, with soft and smooth finishing.



SCREEN PRINTING

Screen printing of logo / artwork is produced by directly pressing ink through mesh screens onto each garment. Each colour of the logo / artwork requires separate mesh screen, therefore a design with multiple colours is more costly than a single-coloured design.

Screen printings can be done on most garments, such as tees, polos, jackets, bags, aprons and so on.